

Tip

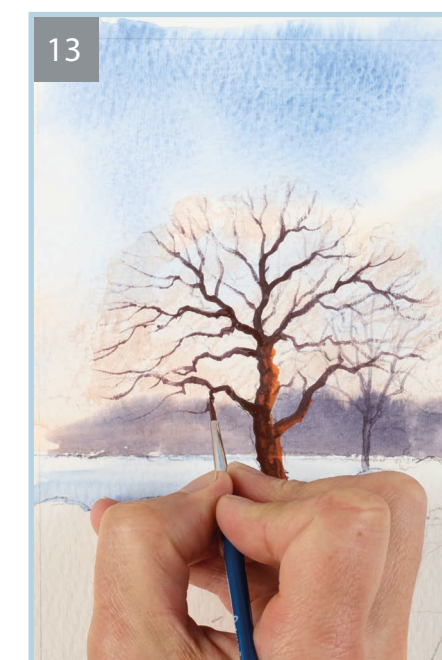
Blending the dark, shadowed side into the lighter side makes the trunk look cylindrical.

- 8 Make a stronger grey mix by adding more blue and red, then use the small brush to paint the trunk and branches of the tree on the right. Start at the bottom and move upwards and outwards, letting the paint run out a bit as you reach the ends of the branches to make sure these are thinner.
- 9 Add a little water to the grey mix to thin it and paint in the slightly larger tree in the middle.
- 10 Add more yellow and red to strengthen the orange mix, and also make a very dark brown from blue and red. This should be darker than either of the other two trees. Use the medium brush to paint the trunk of the left-hand tree with the strong orange.
- 11 Straight away, use the small brush to paint the left-hand shaded side of the tree with the dark brown. The light should be coming from the right.
- 12 Before this dries, use the orange mix on the small brush to blend the two colours a little, removing the impression of a stripe down the tree.

13 Paint branches, as for the other two trees, taking them out to the edge of the light brown wash you did for the twigwork.

14 Use the large brush and a blue wash to paint shadow along the ridges on either side of the road, then paint shadow across the foreground. Allow to dry.

15 Make a light grey mix from yellow, red and a bit of blue, and thicken the dark brown mixed from blue and red. Use the small brush to paint shape and texture into the snowy ridges on either side of the track with the light grey mix.





- 4** Pick up the grey wash and paint this into the bottom left of the sky and into the blue and orange mixes, using the same circular motion. Bring the colour out to the right, just as you did with the blue.

Tip

Painting wet into wet like this is a great way of capturing the soft foliage in the trees, and the impact of the evening light on their shapes as they disappear into the landscape.



- 5** Create a dark cool green mix (F) at the end of a well by mixing yellow and slightly more blue. While the paper is still wet, use this mix and the tip of the medium brush to add tree-like shapes onto the horizon line. Start from the far left and paint the trees to just about a third of the way in. Allow the paint to fade on your brush to create the illusion of them disappearing into the distance. Pick up the orange mix with the same brush and continue the line of trees, painting into the last few green tree shapes and continuing about two thirds of the way across the page. Finish the tree line with the warm grey mix. Dot a little of the orange mix into the trees on the far left to unify the line of trees a little more. Allow the water on the brush and paper to merge the two colours.



- 6** Using the light orange wash used for the sky and a clean medium brush, paint in the water below the horizon line. Concentrate the colour about two thirds of the way down the body of water, then using horizontal strokes and a little water on the brush spread out the colour above and below. Pick up the light grey wash, and add streaks of it to the orange water. Again, concentrate the colour around the bottom right, and use the water on the brush to spread it out above and below. Leave to dry.

Tip

You will notice the reflection of the sky in the water is painted wet on dry. To ensure you have a smooth, clean wash, make sure you have wetted your brush enough to allow the mix to flow smoothly onto the paper.