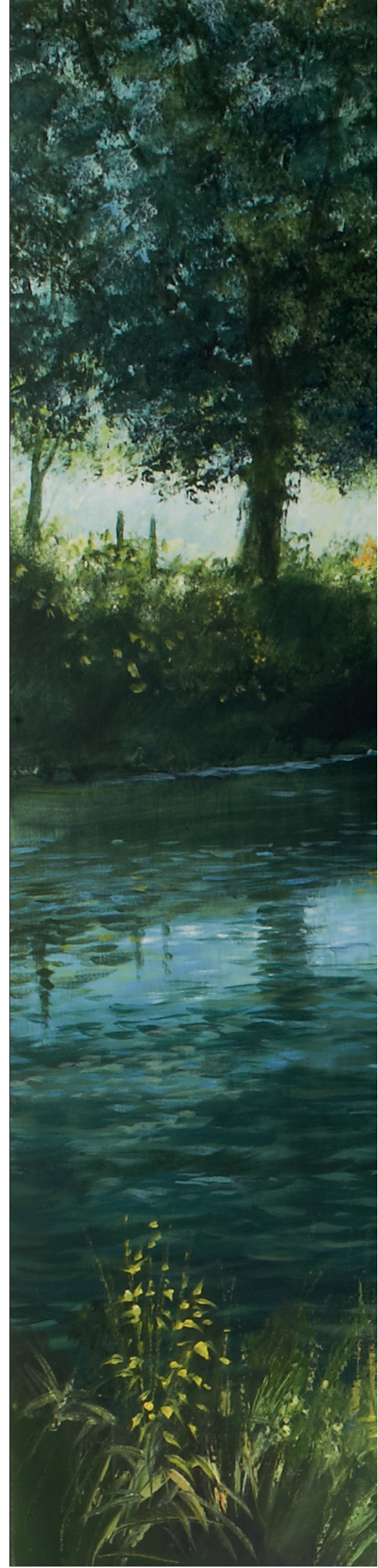


USING THE BRUSHES

Hot Day, Cool Waters

To capture the light in this painting, it is important to have plenty of darks. It is the contrast between lights and darks that creates the sunlight in the painting. The feeling of depth is achieved with the use of light and dark as well as colour. The darks and shade of the foreground lead you downstream to the light blue, hazy distance of the bend in the river. The mood of the painting is captured by colour but using different types of brushes created the texture: the dense foliage of the trees on the opposite bank was stippled using the golden leaf brush. Using the same brush, the water and reflections were painted using bold downward brush strokes.

The medium detail brush was used to paint the tree trunks and some of the ripples in the water, and the 13mm (1/2in) flat brush was used to create some of the ripples and reflections.



Sheep



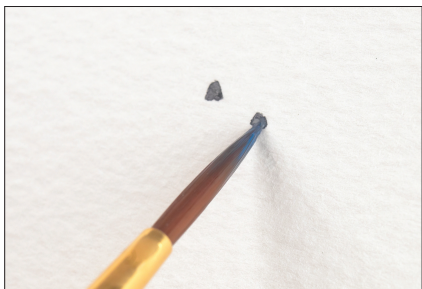
1. Paint shapes with raw sienna and white on the small detail brush.

2. Paint the dark and shaded parts with ultramarine and burnt umber.

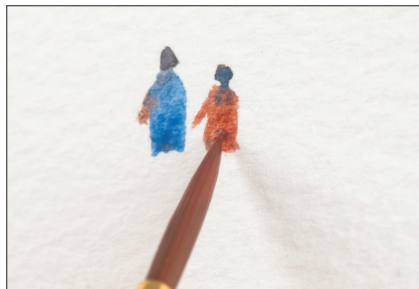


The finished sheep.

Figures



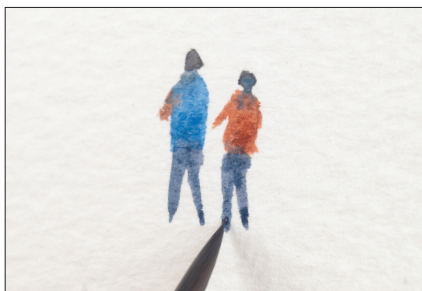
1. Paint heads with the small detail brush and burnt umber and ultramarine.



2. Paint one torso with cerulean blue and the other with burnt sienna. Suggest arms with burnt sienna.



3. Give each figure one leg first, with a mix of ultramarine and burnt umber.



4. Paint in a second leg for each figure.



5. Paint a shadow beneath the figures with ultramarine and burnt umber.



The finished figures.