

GUINEVERE'S NECKLACE

This lovely knot has inspired quite a number of people to start making Celtic knots. I received the design from Todd and Sherry Greer in Austin, Texas, who make hand-tied Celtic knotwork. They learnt this knot from Dave Love at a Renaissance fair.

Another name for the Guinevere knot could be the 'Renaissance knot' as it keeps re-appearing, tied in leather and different cords. It is great to know that so many people are now tying Celtic knots and making jewellery with them.



You will need

3m (118in) light red
2mm satin cord

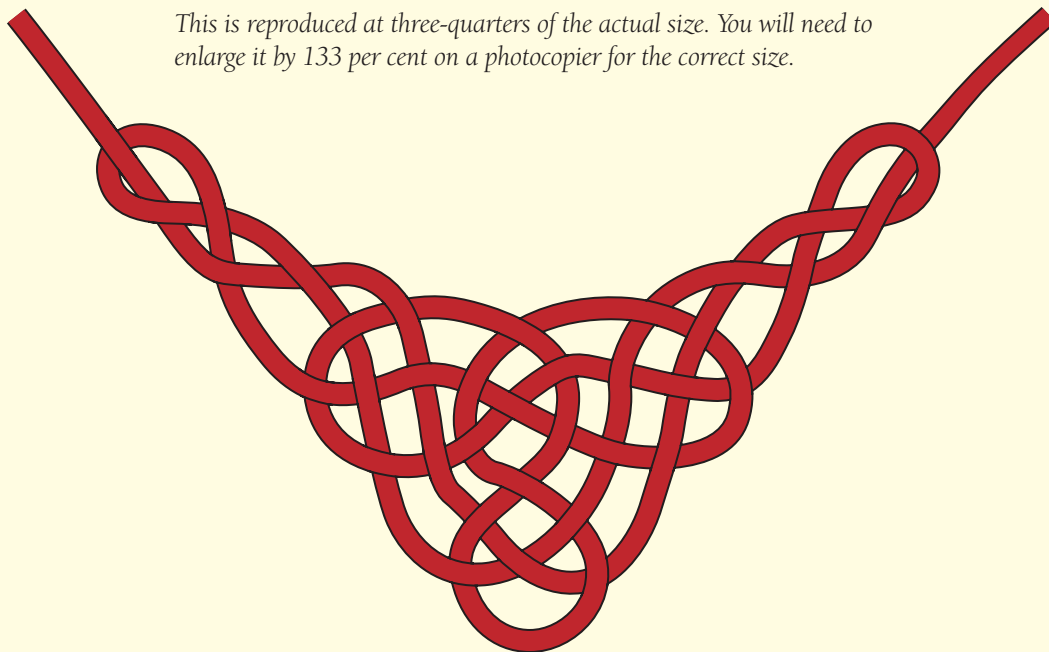
3m (118in) dark red
2mm satin cord

One pendant with bail

Celtic beads: four bars and
two 'Cyfrin dragon's eye'

Guinevere knot pattern

This is reproduced at three-quarters of the actual size. You will need to enlarge it by 133 per cent on a photocopier for the correct size.

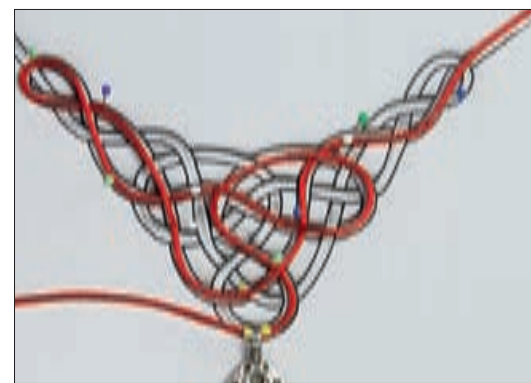
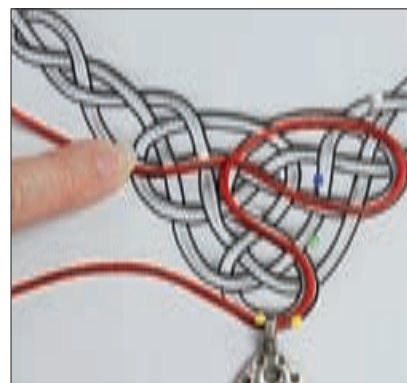
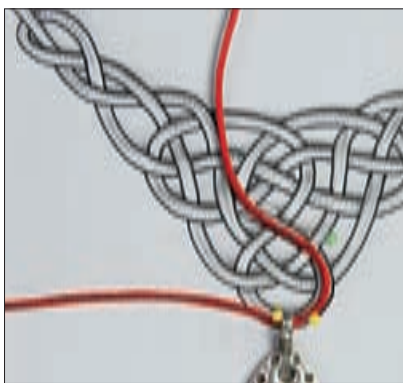




1. Photocopy the pattern and pin it to your cork mat. Thread the pendant on to the middle of the light red cord and pin it in place on either side of the pendant.

Tip

You can enlarge the pattern on a photocopier if you wish.



2. Starting with the end of the cord emerging from the right of the pendant, begin to lay the cord so that it follows where the pattern leads. Pin where necessary to keep the cord on the pattern.

3. Continue laying the cord along the lines of the pattern. Where the pattern leads the cord back on itself, check whether the pattern indicates you to take the cord under or over itself to continue.

4. Work carefully around the pattern, making sure the cord goes under and over itself where appropriate. The pattern eventually leads the right-hand cord off to the top right corner. Secure it with a pin.



5. Follow the pattern in the other direction using the cord emerging from the left of the pendant. Pay careful attention to the 'unders and overs' where the cords cross each other.



6. The triangle is now fairly stable, so you can remove most of the pins. If you feel the work moves too much, you can add a couple of extra pins to support it.

Note
At this point, if the weaving is correct, the knot will be stable. If not, one piece of the design will spring up and loosen, so check that the overs and unders in the weaving are correct. If not, undo it and re-weave the cord.



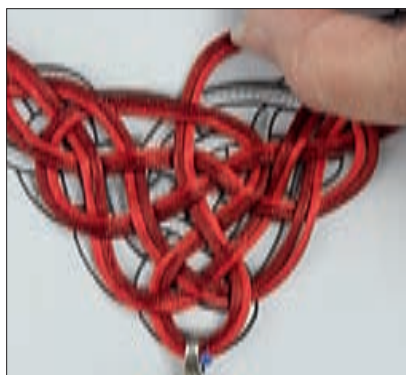
7. Thread the dark red cord on to the pendant and run it through until the central point of the cord is in the pendant. Pin it to secure it in place within the loop of the light red cord at the bottom.



8. Follow the pattern again, laying the right-hand end of the dark red cord down next to the light red cord. Make sure that the cords remain touching, but do not allow them to cross. When the cord reaches the top right corner, pin the cord to secure it in place.



9. Lay the left-hand end of the dark red cord down in the same way and pin it at the top left.



10. Remove all but the pin next to the pendant and begin tightening the knot by pulling the loops away from the central point. Do not try to tighten too much at once as this can distort the shape.

11. Continue pulling the cords around the pattern, following the path in which the cords were laid down. Do not allow the light red and dark cords to cross at any point: keep them next to one another.



12. Notice how tightening enlarges a loop, which is then tightened by pulling it a short distance further along the design. This gradual process keeps everything aligned in the correct shape.



13. The piece will gradually get smaller as you tighten, so a stage-by-stage approach is best. Work around and around the cord until the knot is roughly half the size of the original pattern.



14. Remove the piece from the cork mat and pattern, then tie a button knot around the light red cord on the top left using the adjacent dark red cord.



15. Thread a bar bead on to both cords, slide it down to the button knot, then make a second button knot next to the bead with the light red cord knotted around the dark red cord.



16. Thread both cords through one side of a Cyfrin dragon's eye bead (see inset), then run it down to the second button knot. Make a third button knot by tying the light red cord around the dark red cord and move it down within the dragon's eye bead. Take the ends of the cords out of the other side of the bead. (See page 16 for how to move the button knot.)



17. Make a button knot above the bead using the light red cord around the dark red cord. Slip on a bar bead and then tie a sliding button knot using the dark red cord around the light red cord.



18. Thread both cords through the hook and run it down to approximately 15cm (6in) from the last button knot.

Note

It is important to use and alternate both coloured cords to make the knots. If you use only one colour the knots will slide up and down and spoil the design.



19. Using the free end of the light red cord, tie a sliding button knot around the other three cords. Move the knot up to the hook and then tighten.



20. Cut and seal the end of the light red cord.



21. Tie a sliding button knot around the other three cords using the free end of the dark red cord. Move the knot up to the hook and then tighten it. Cut and seal the dark red cord. You now have two sliding knots side by side which is more comfortable than a double button knot on the back of the neck. When moving them, hold both at the same time as if they were one.



22. Repeat this process using the cords on the right-hand side of the piece, substituting an eye for the hook when finishing.

Note

When there is a clasp in between the sliding knots, each sliding knot must be moved separately to adjust the length of the necklace.

Both can be moved at once if there is no clasp in between them.

Opposite:

The finished necklace is at the bottom right. The blue necklace to the left is made with a thick firm cord which keeps stable once knotted even though it is only a single cord, while the gold necklace uses leather cords and has a feature lampwork bead by Rachelle Goldreich.

