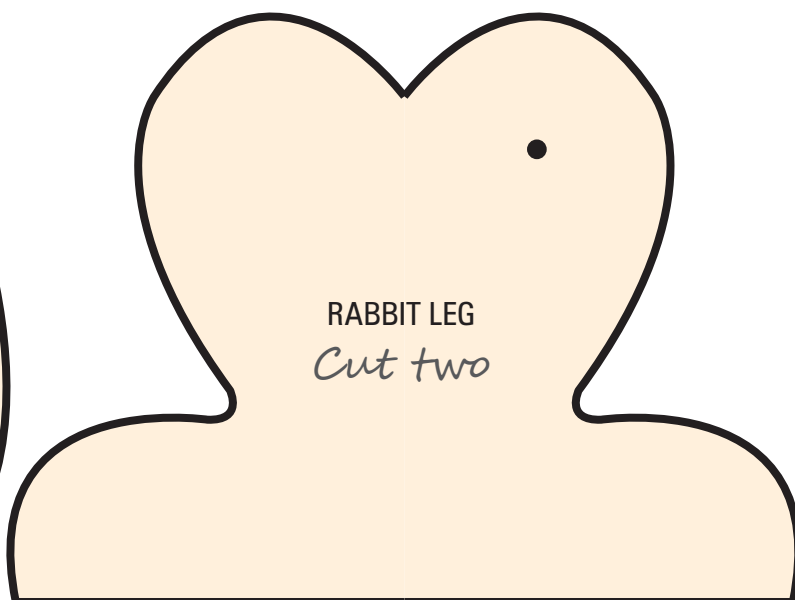
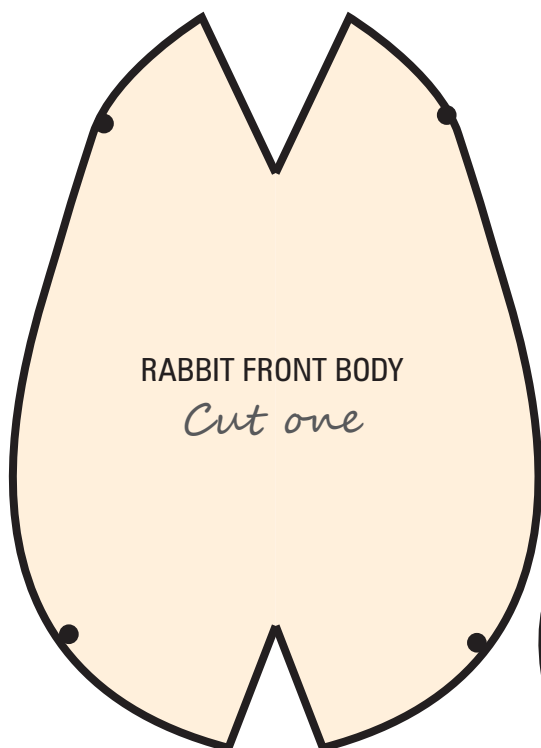
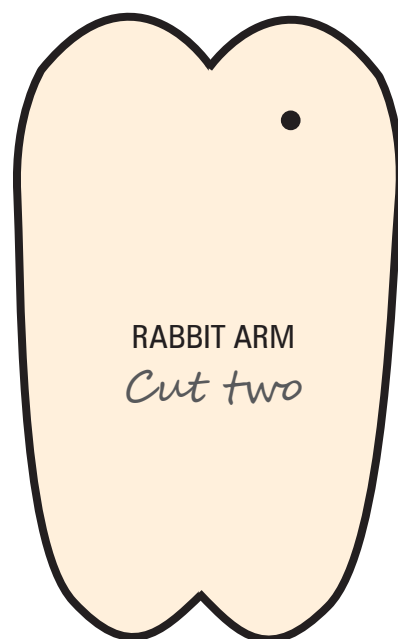
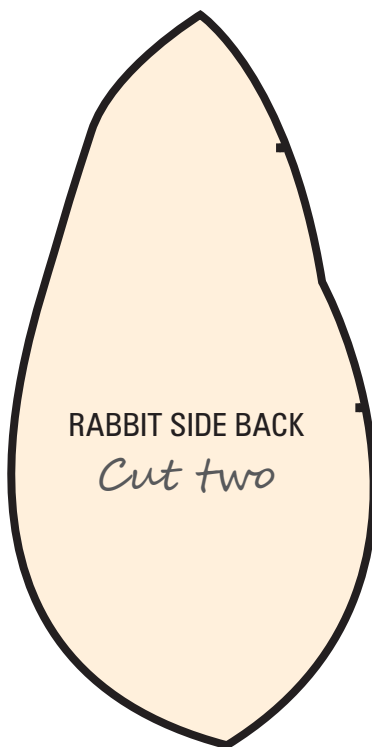
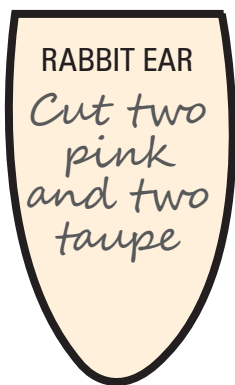
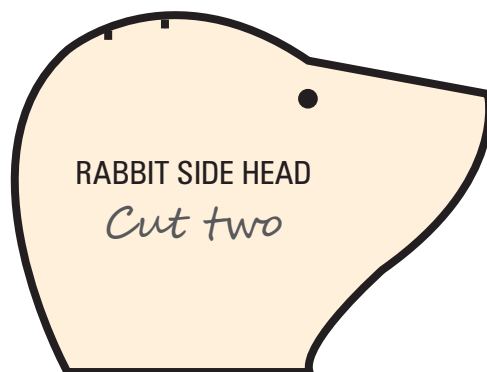


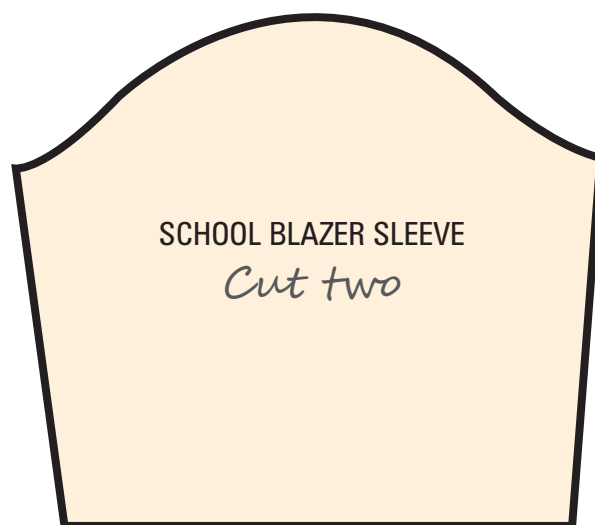
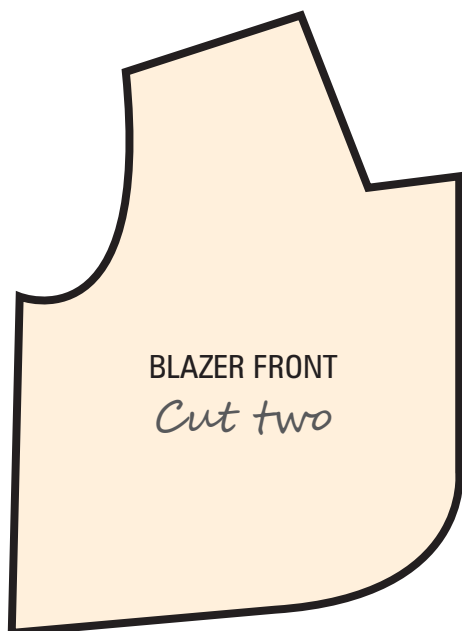
Rabbit body

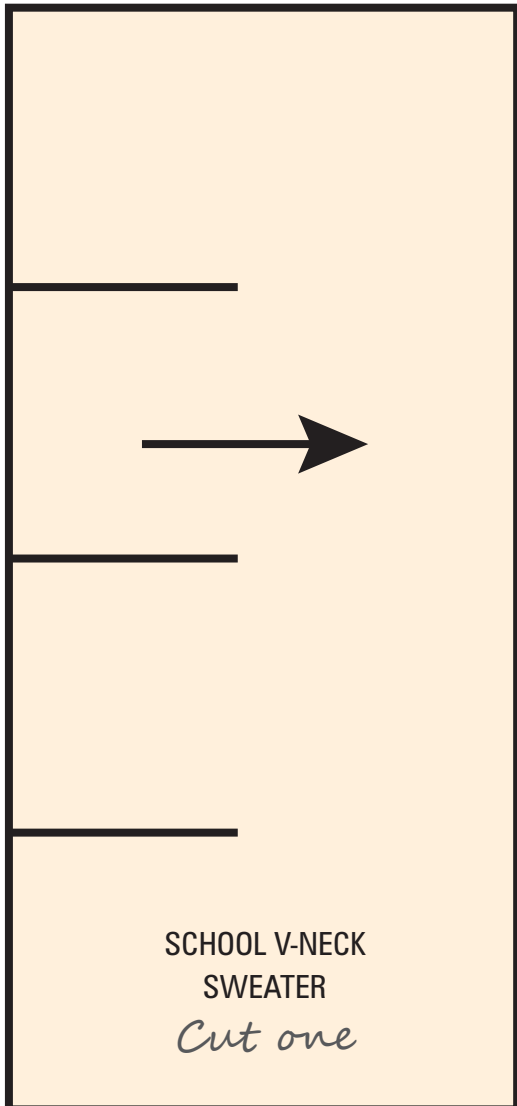
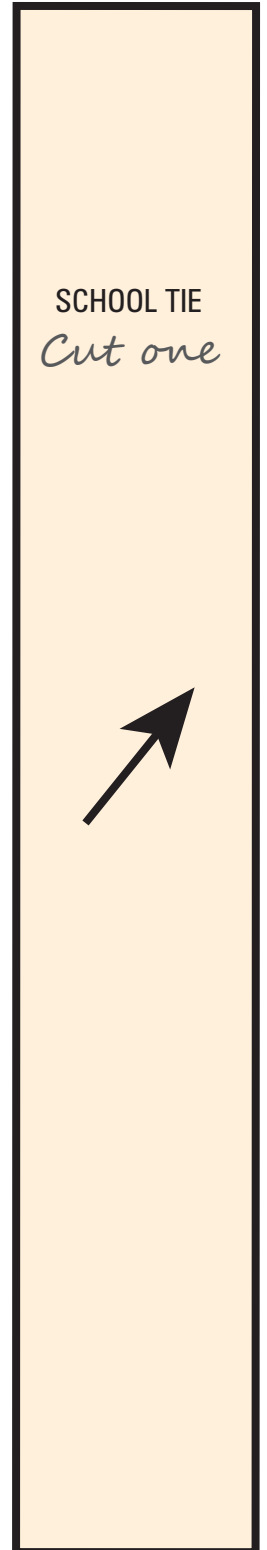
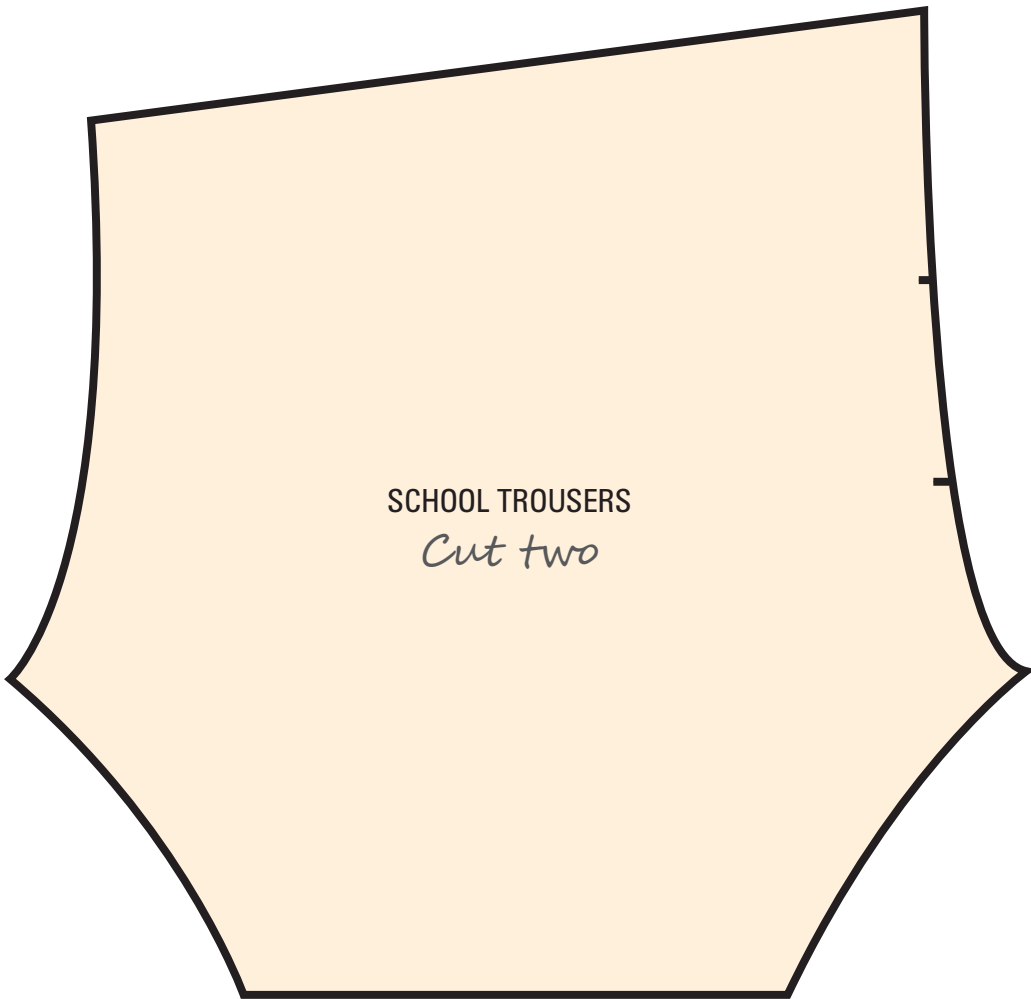
All templates are shown at actual size.



Schoolboy's uniform: trousers, blazer, sweater, collar and tie

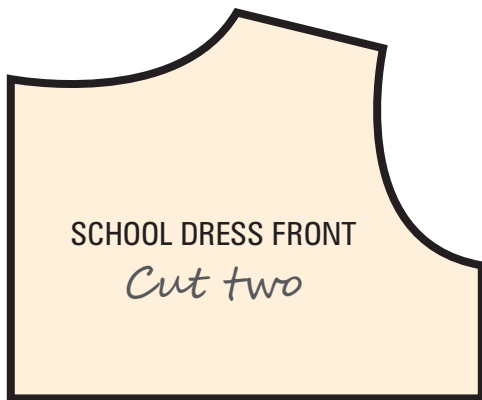
All templates are shown at actual size.





Schoolgirl's uniform: dress and cardigan

All templates are shown at actual size.

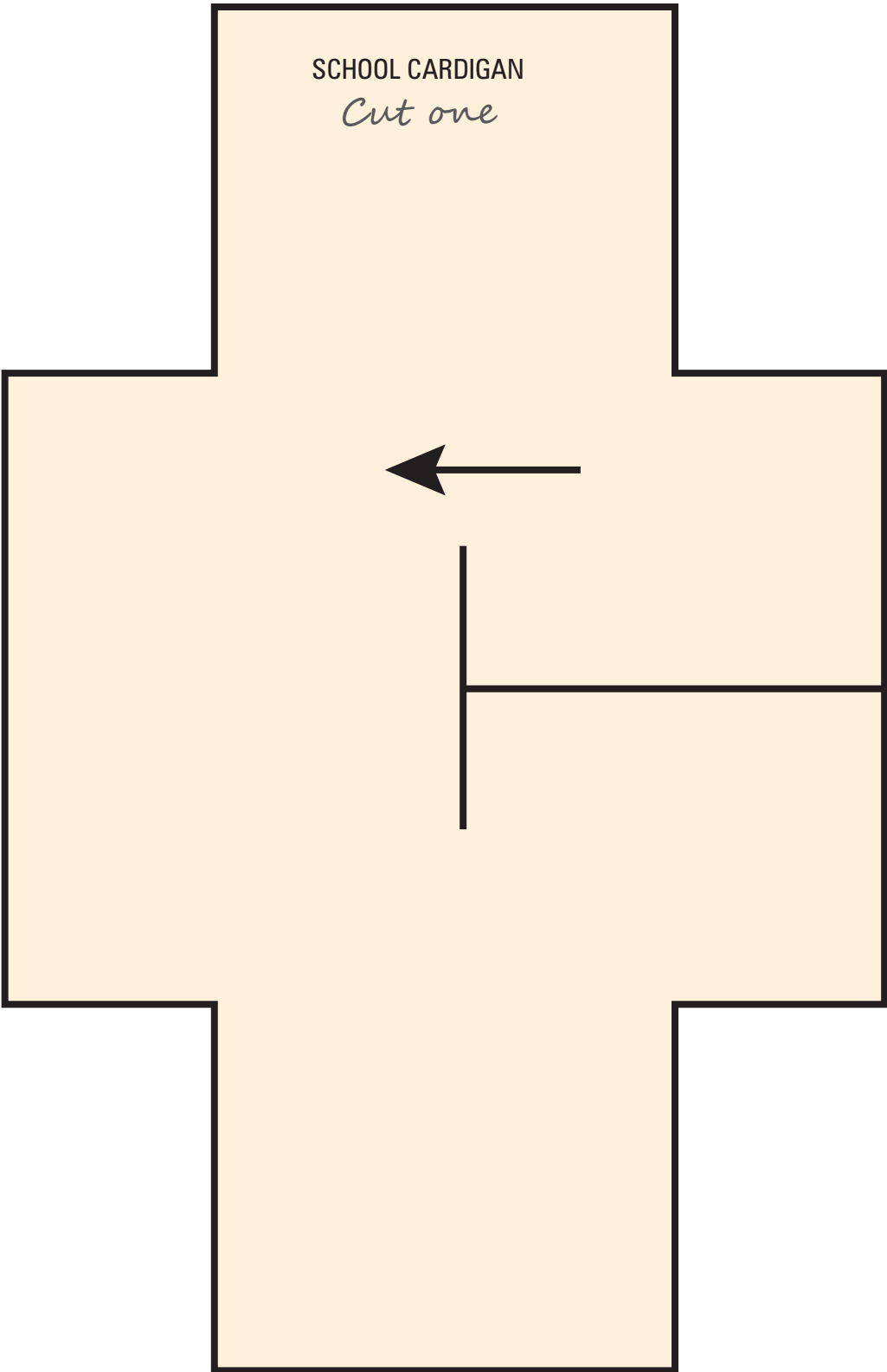






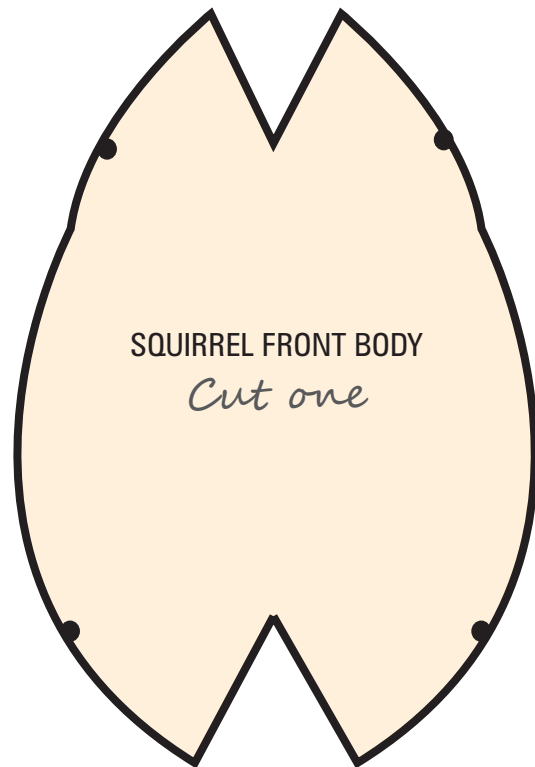
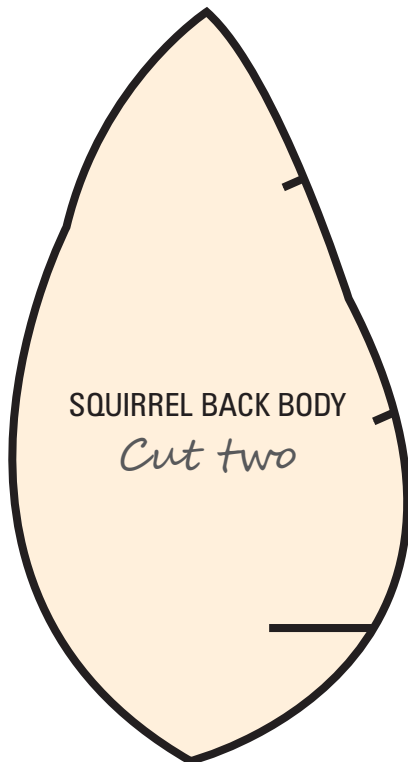
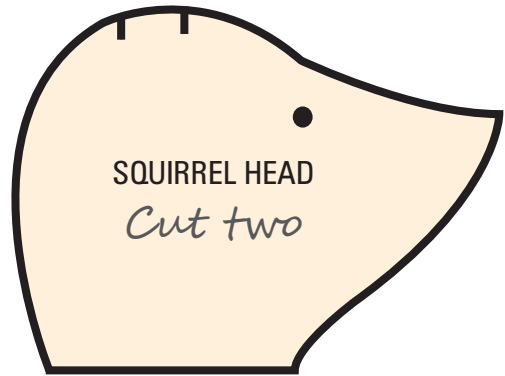
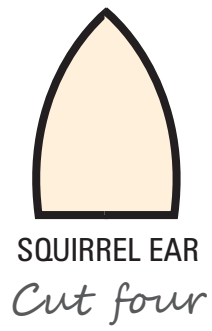
SCHOOL CARDIGAN

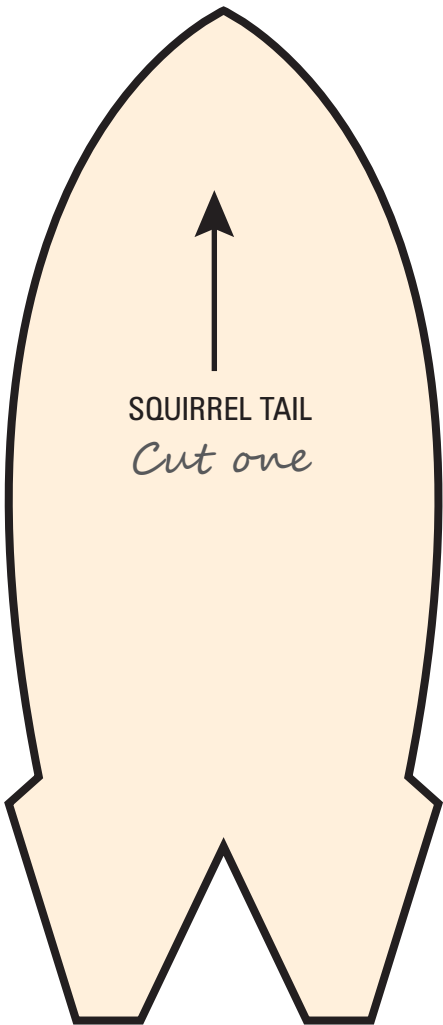
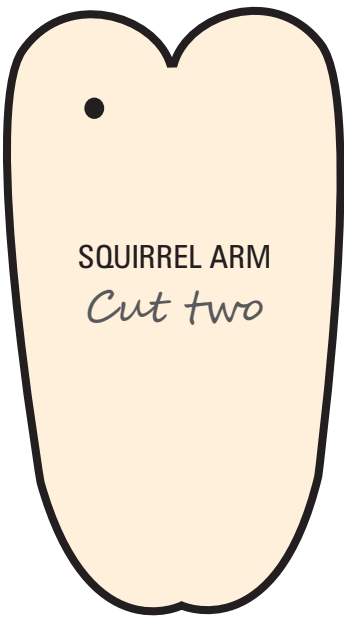
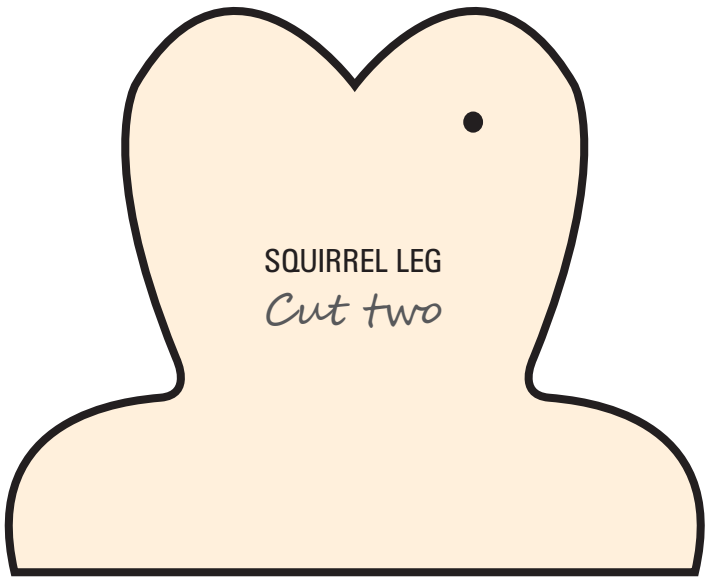
Cut one



Squirrel body

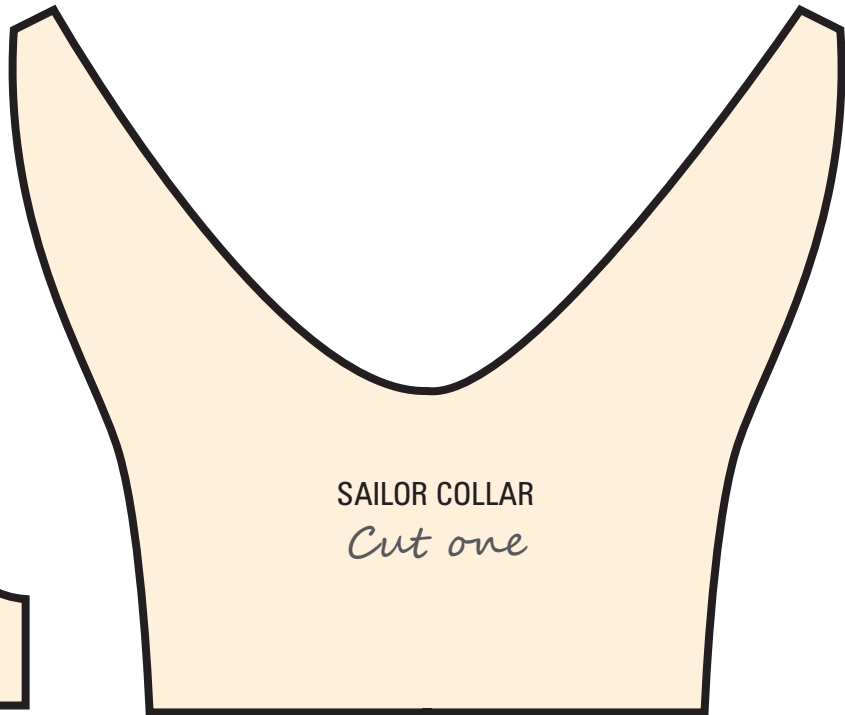
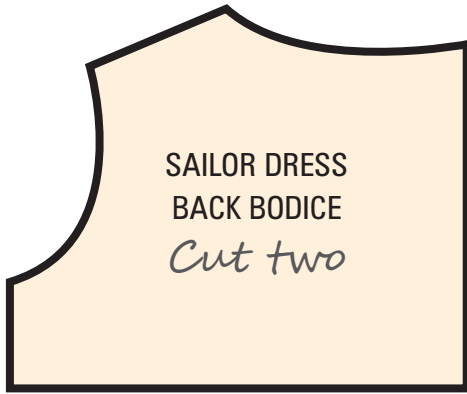
All templates are shown at actual size.

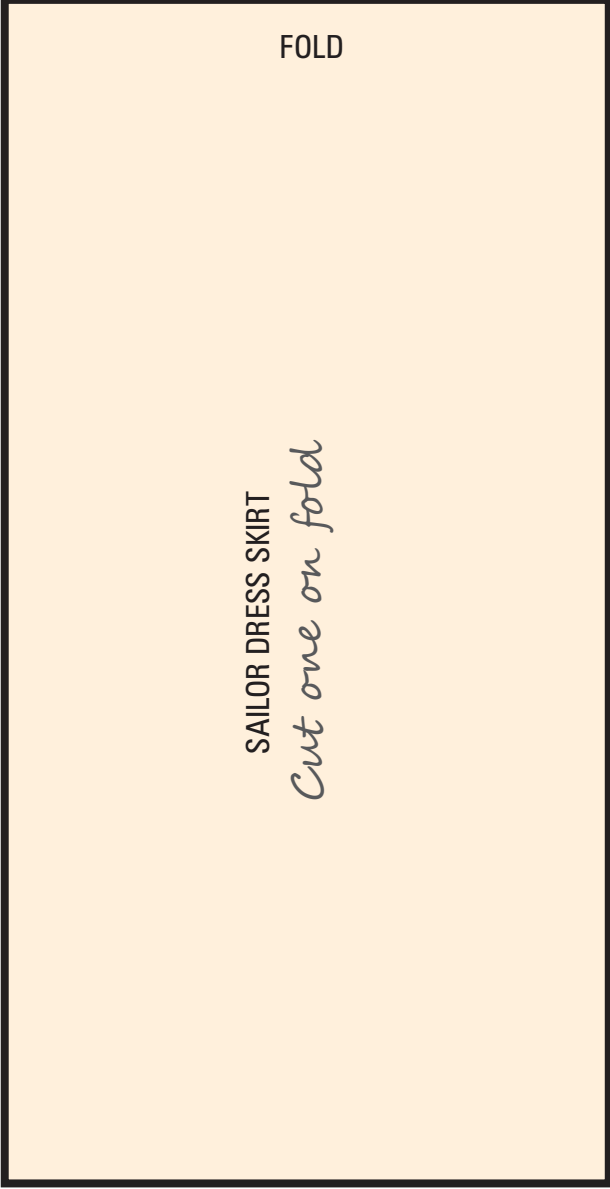




Summer clothes: sailor dress and collar

All templates are shown at actual size.





Gardening clothes: dungarees and scarf

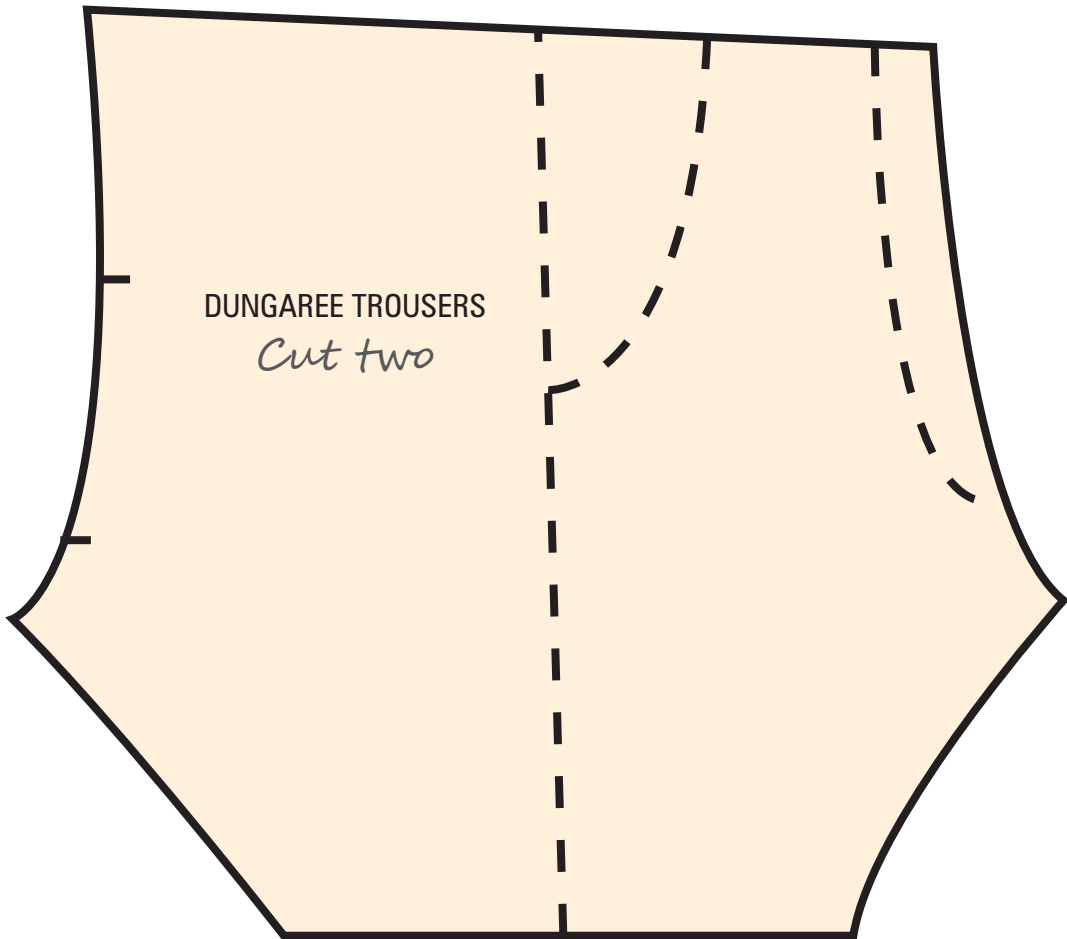
All templates are shown at actual size.

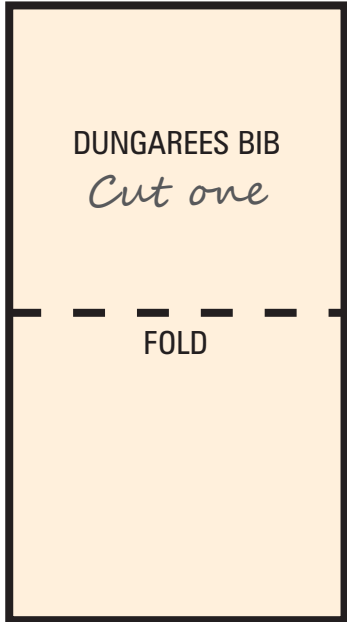
DUNGAREES STRAP

Cut one

DUNGAREE TROUSERS

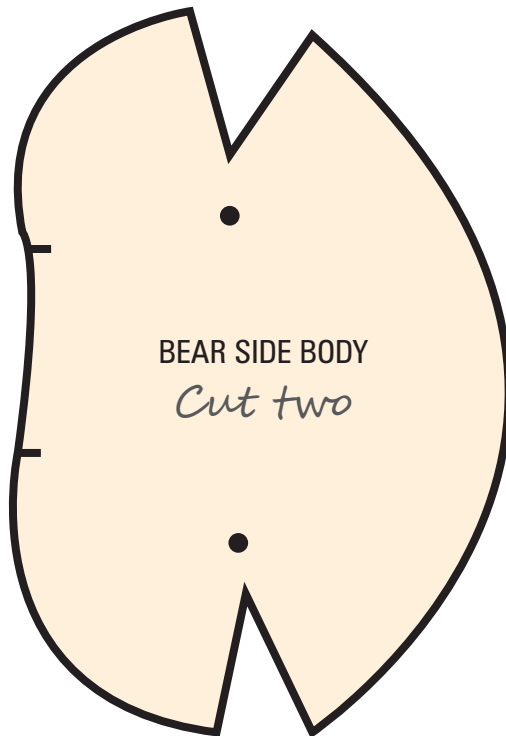
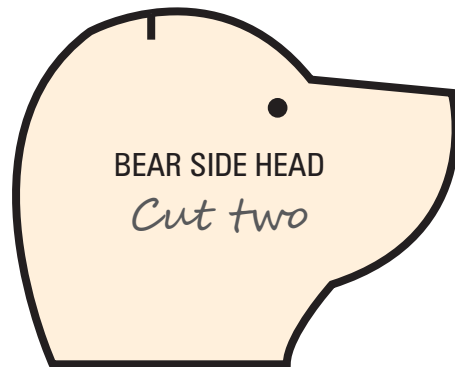
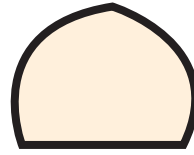
Cut two

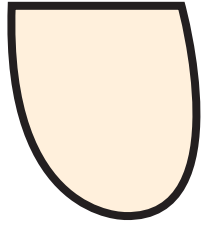




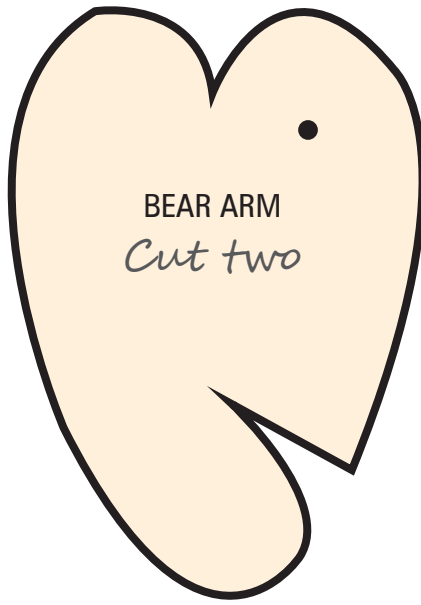
Bear body

All templates are shown at actual size.

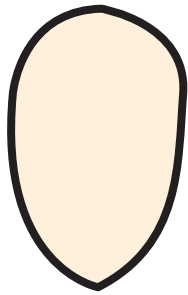




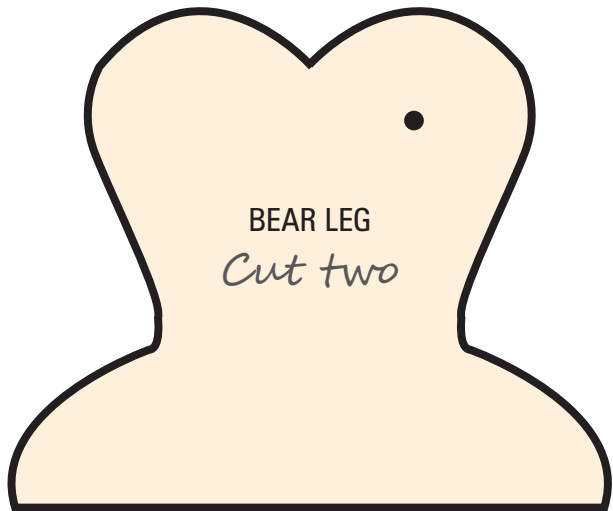
BEAR HAND PAD
Cut two



BEAR ARM
Cut two



BEAR FOOT PAD
Cut two

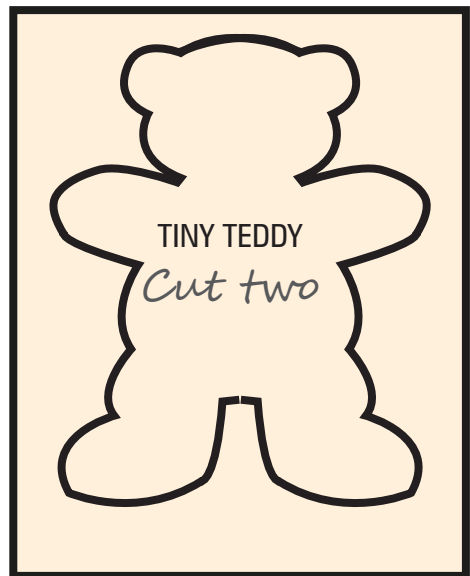
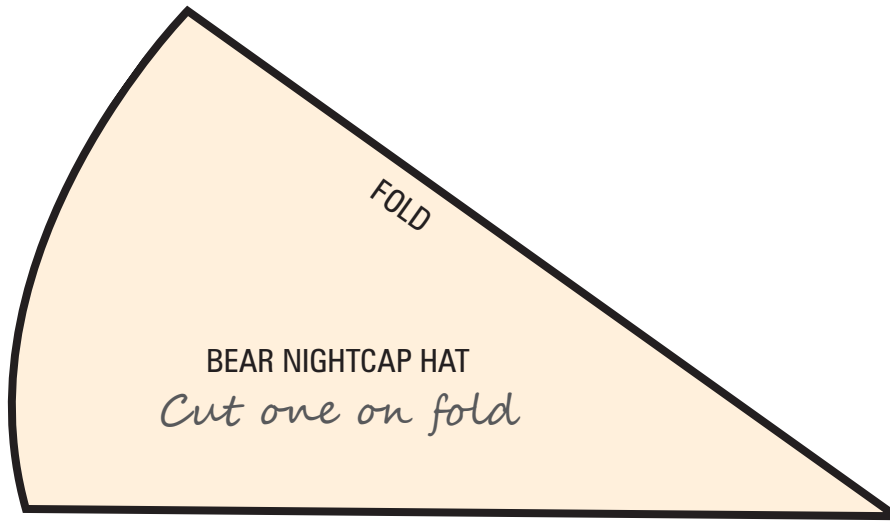


BEAR LEG
Cut two

Sleepwear: nightcap, blanket and teddy bear

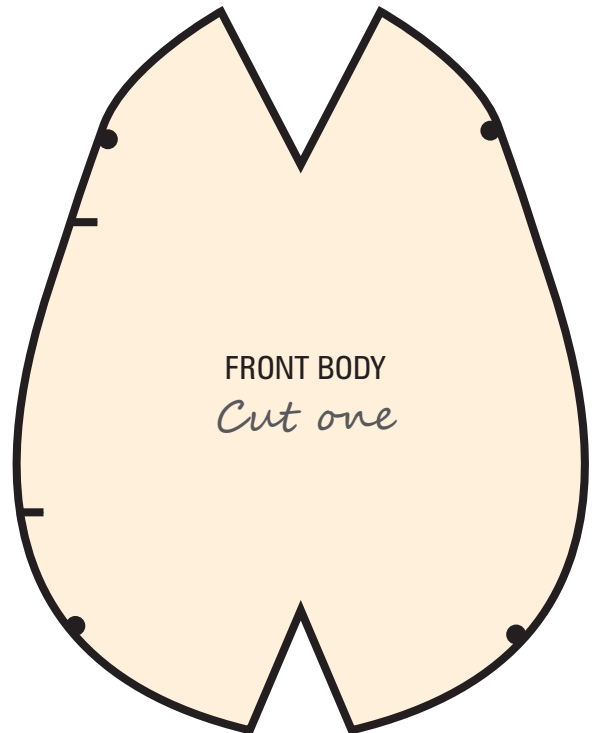
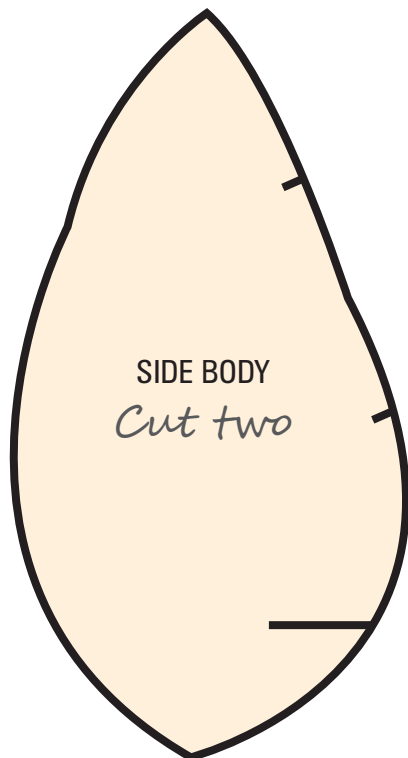
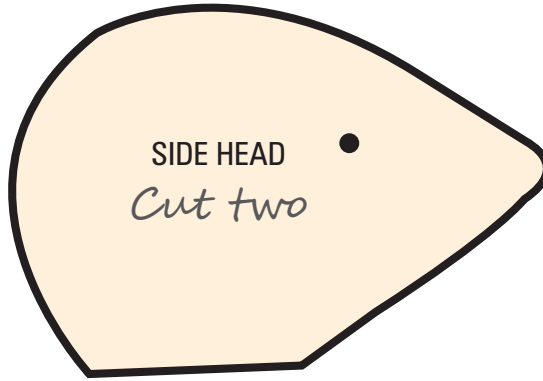
All templates are shown at actual size.

BLANKET
Cut one



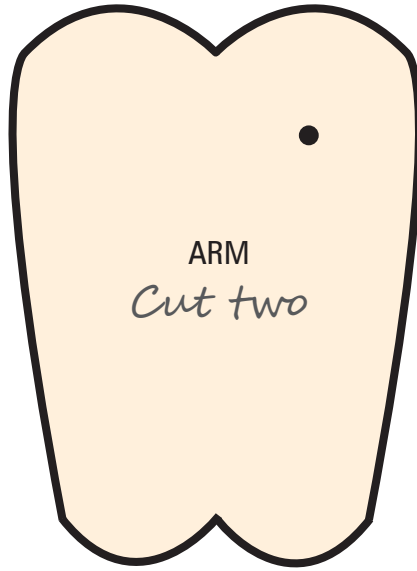
Mole body

All templates are shown at actual size.

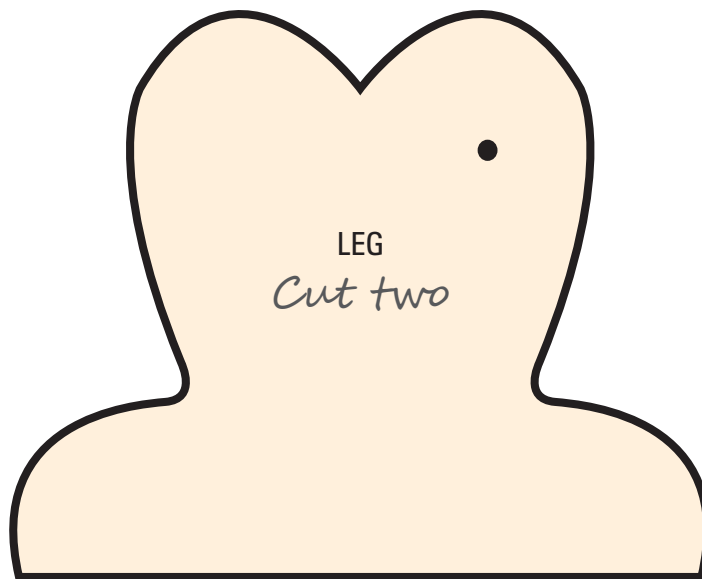




HAND
Cut two



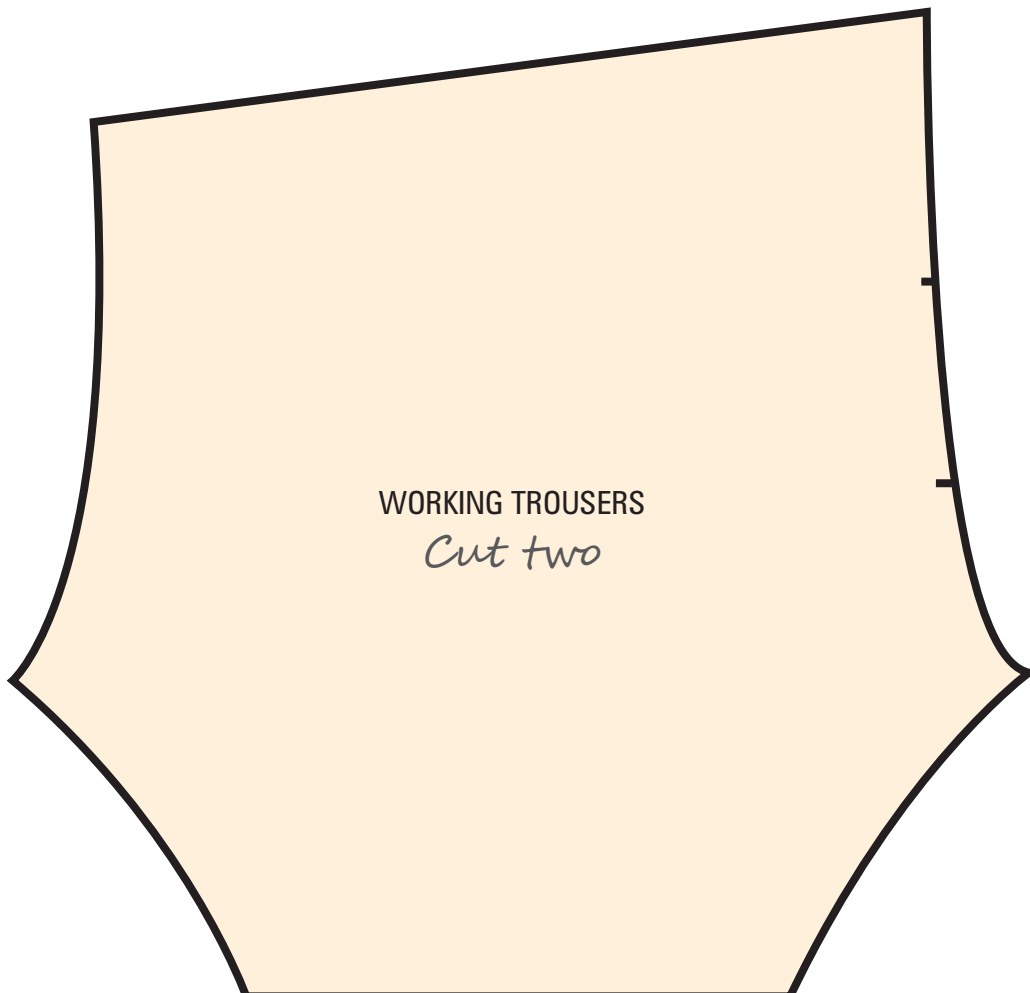
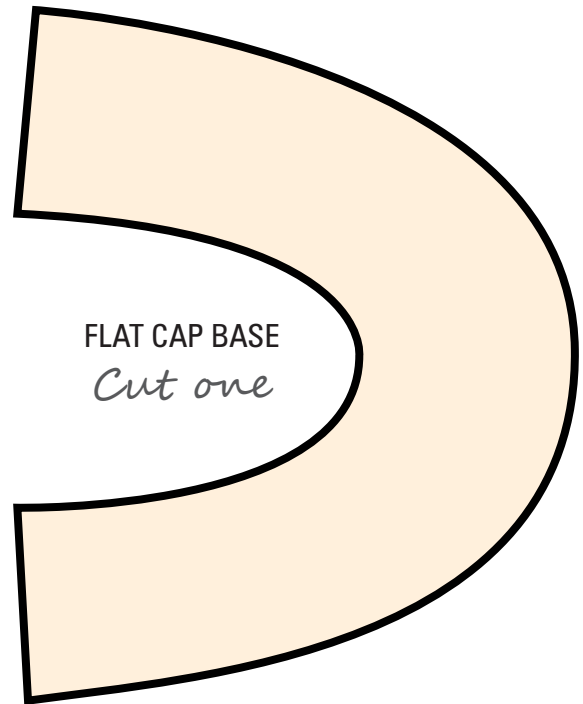
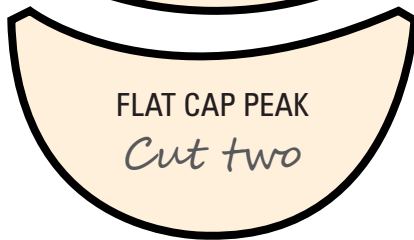
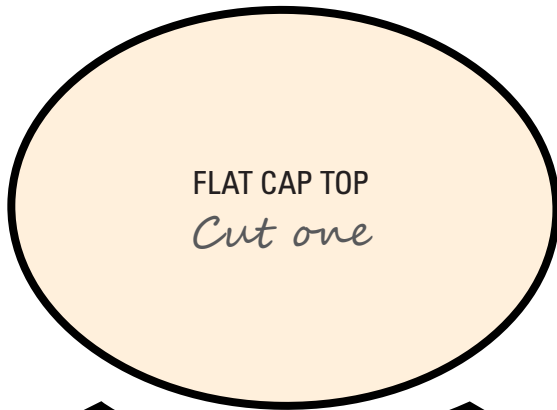
ARM
Cut two

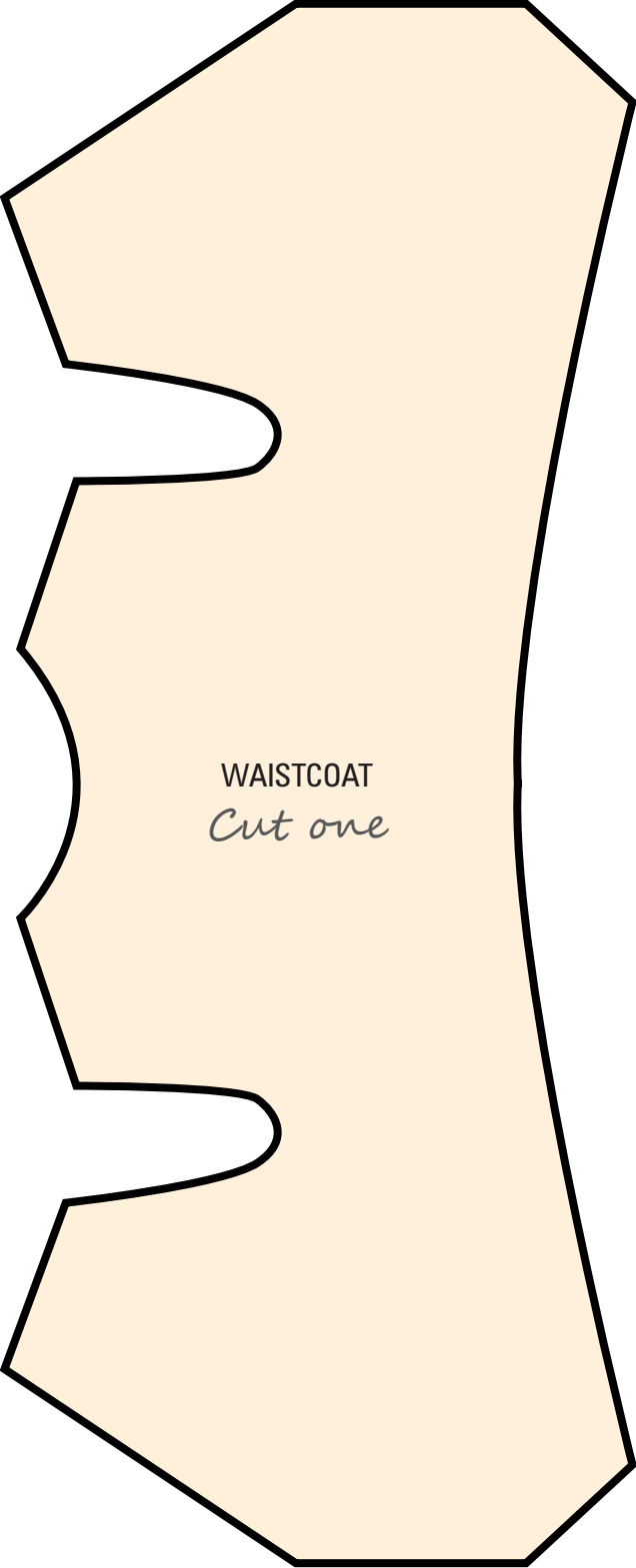


LEG
Cut two

Working clothes: flat cap, neckerchief, waistcoat and trousers

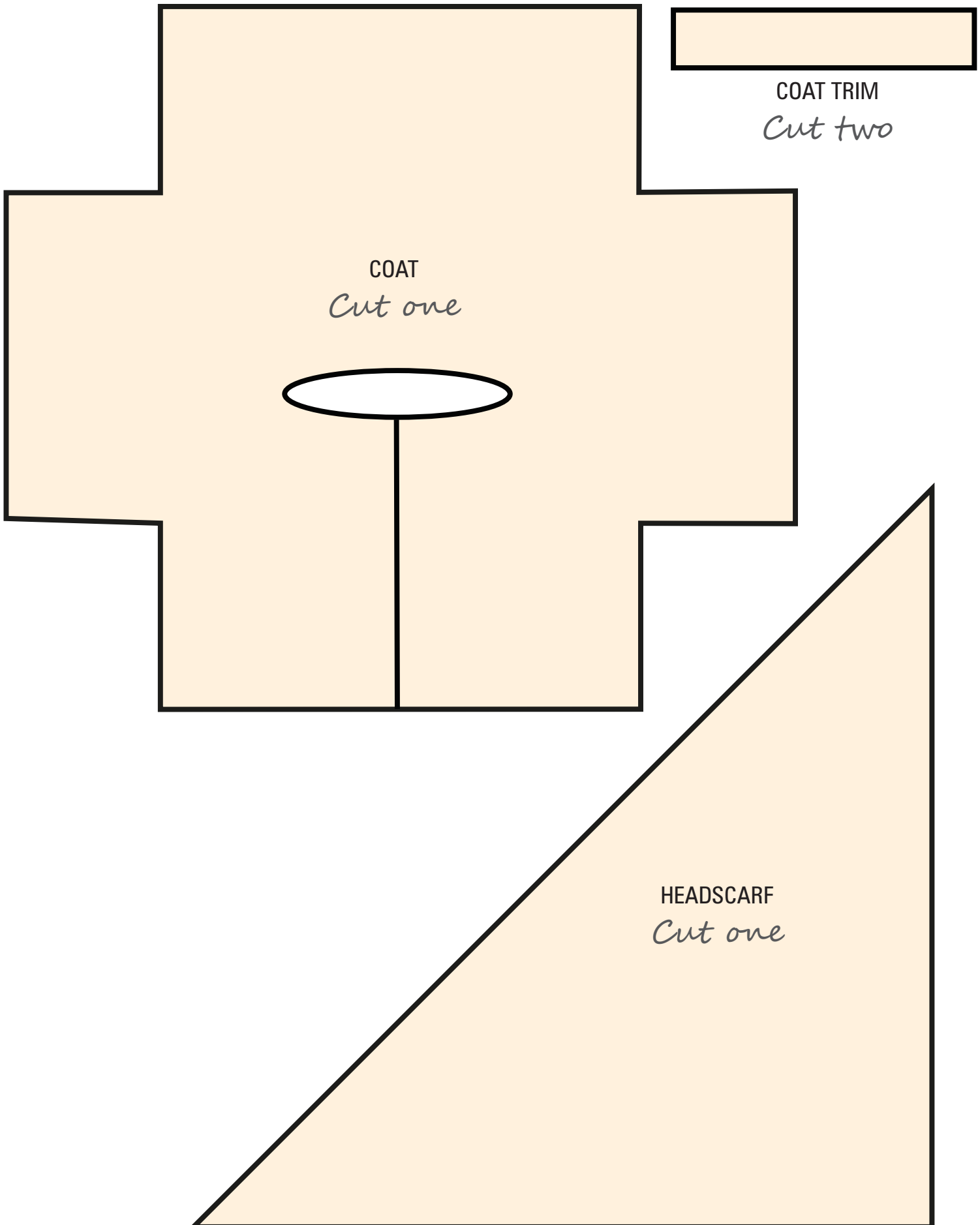
All templates are shown at actual size. The working trousers template is identical to the school trousers on page 37 of the book. It is reproduced here for your convenience.





Winter clothes: skirt, coat and headscarf

All templates are shown at actual size.



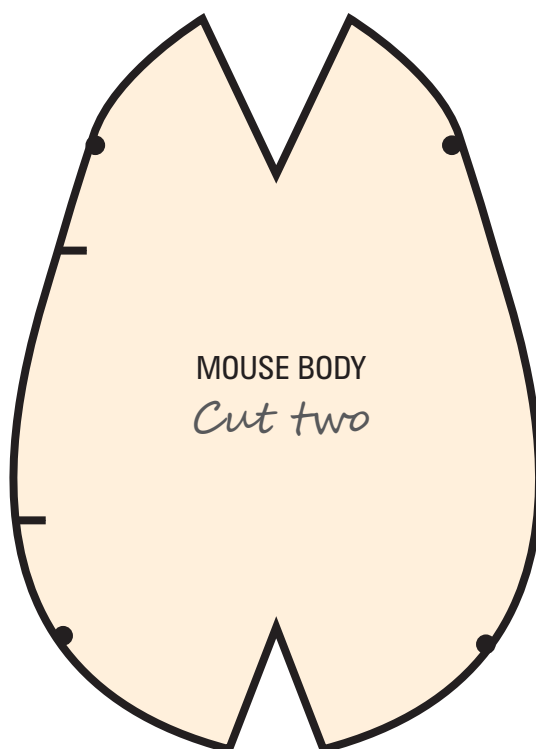
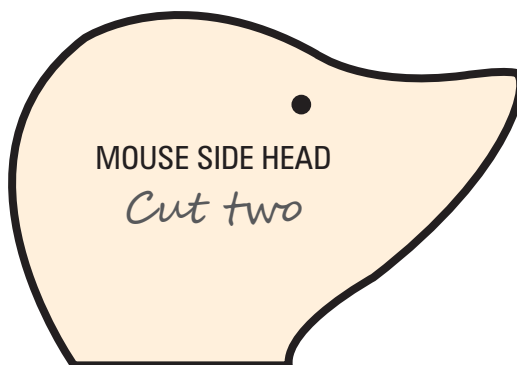
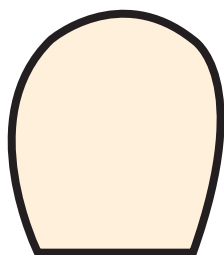
SKIRT TRIM *Cut one*

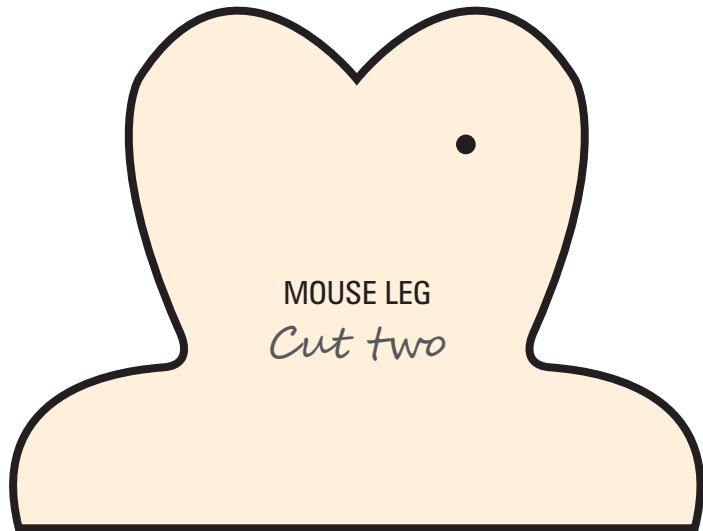
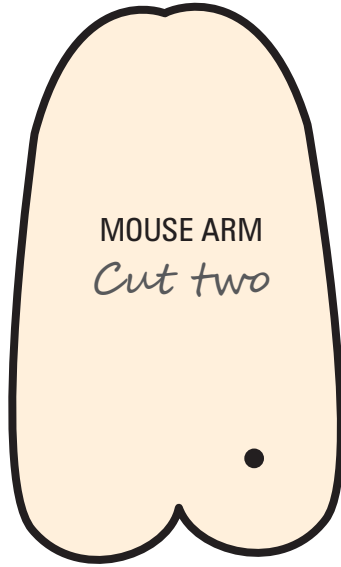
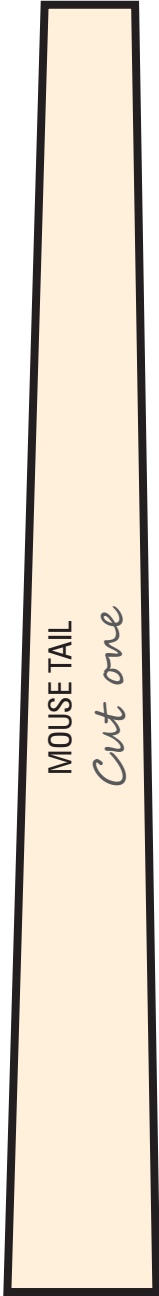
SKIRT
Cut one

COAT COLLAR
Cut one

Mouse body

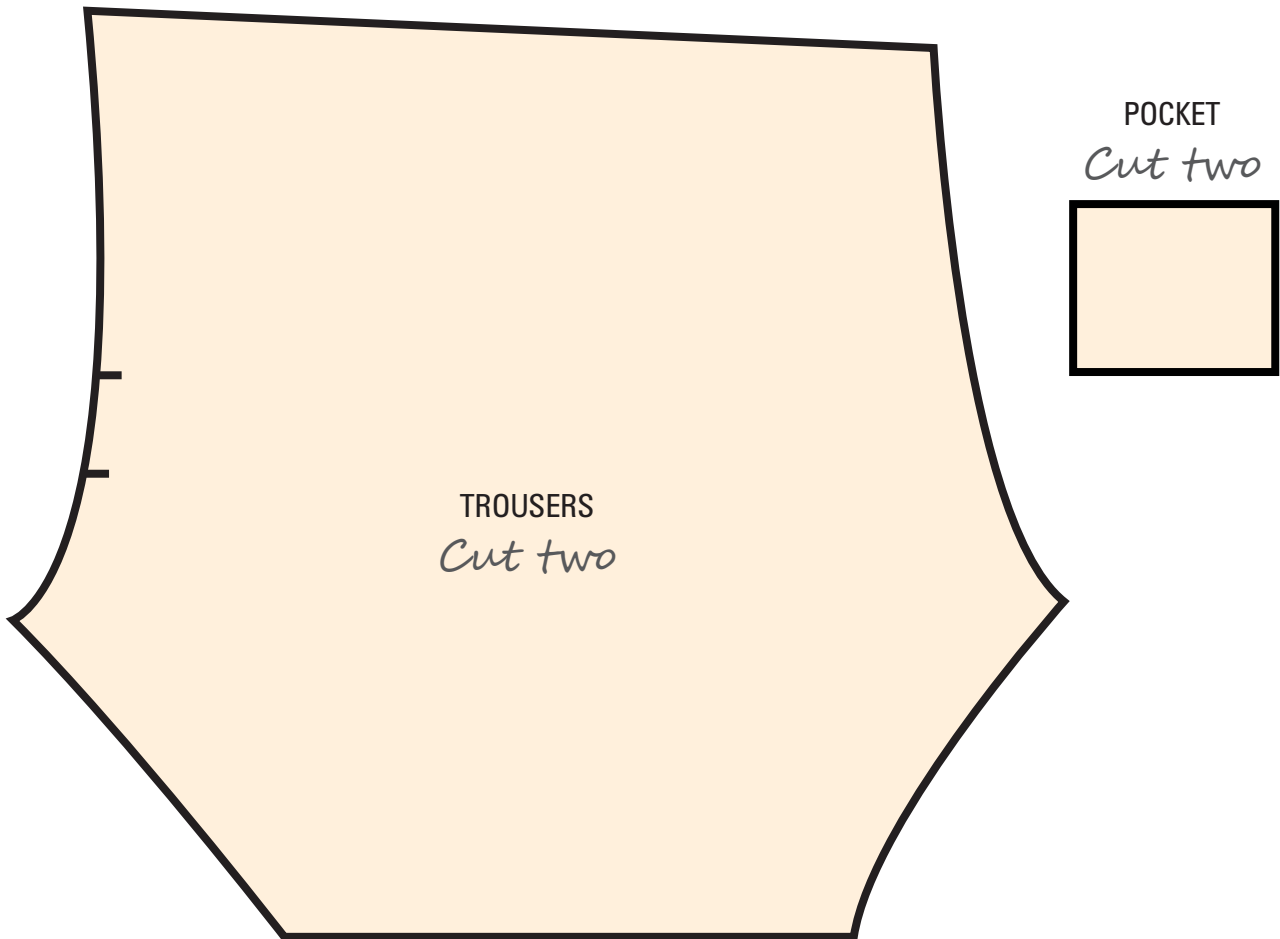
All templates are shown at actual size.

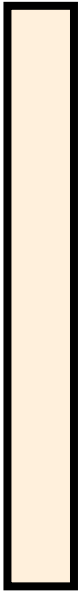




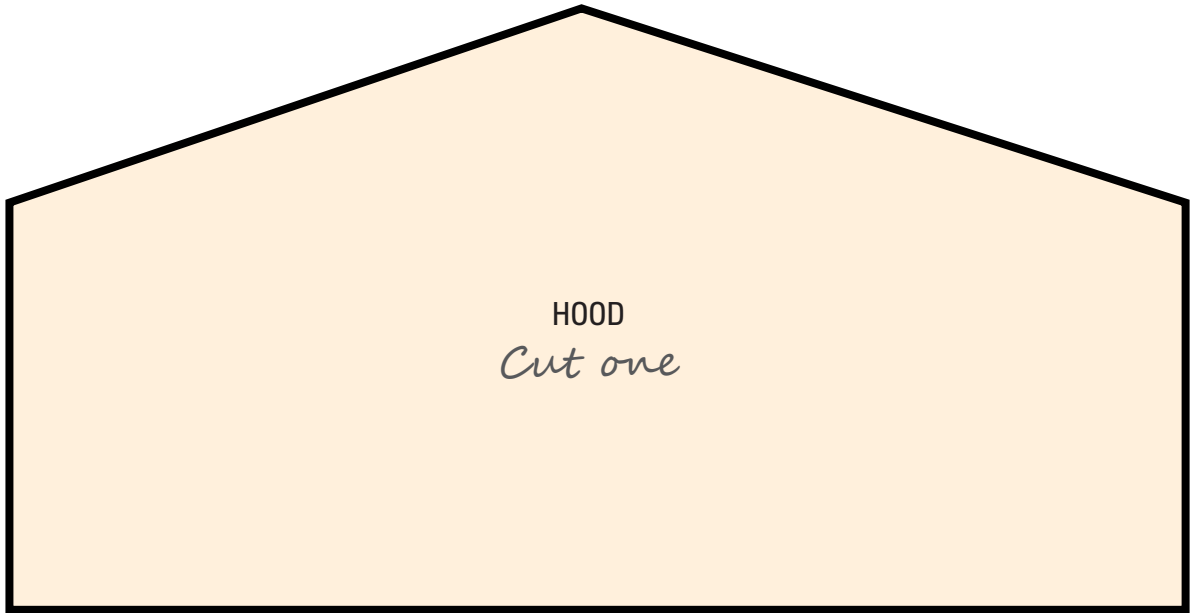
Boy's outdoor clothes: trousers, hooded coat and scarf

All templates are shown at actual size.

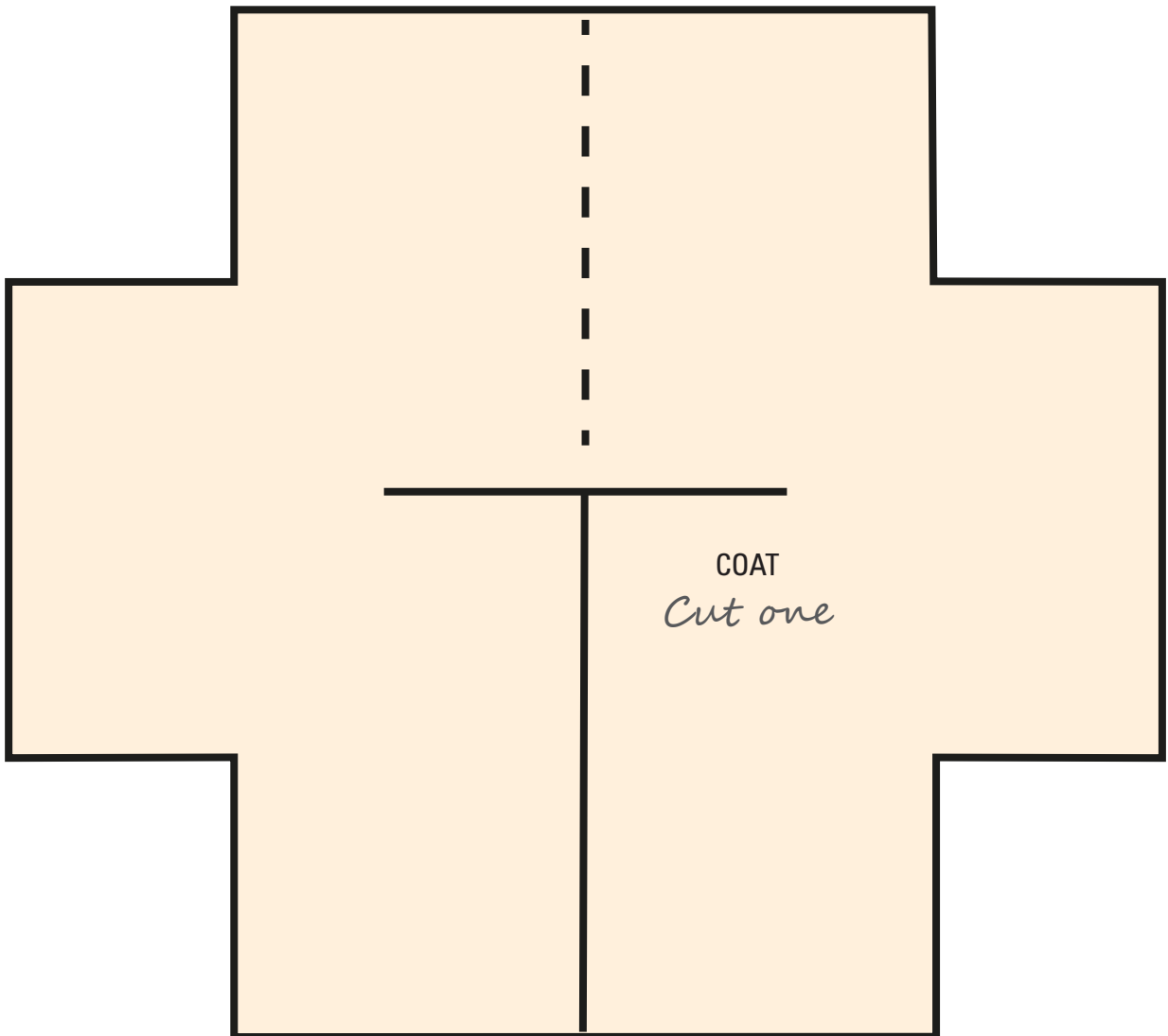




HOOD TASSEL
Cut one



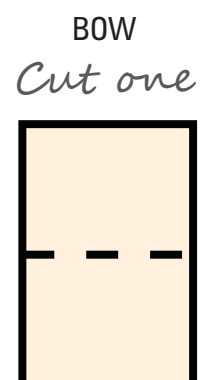
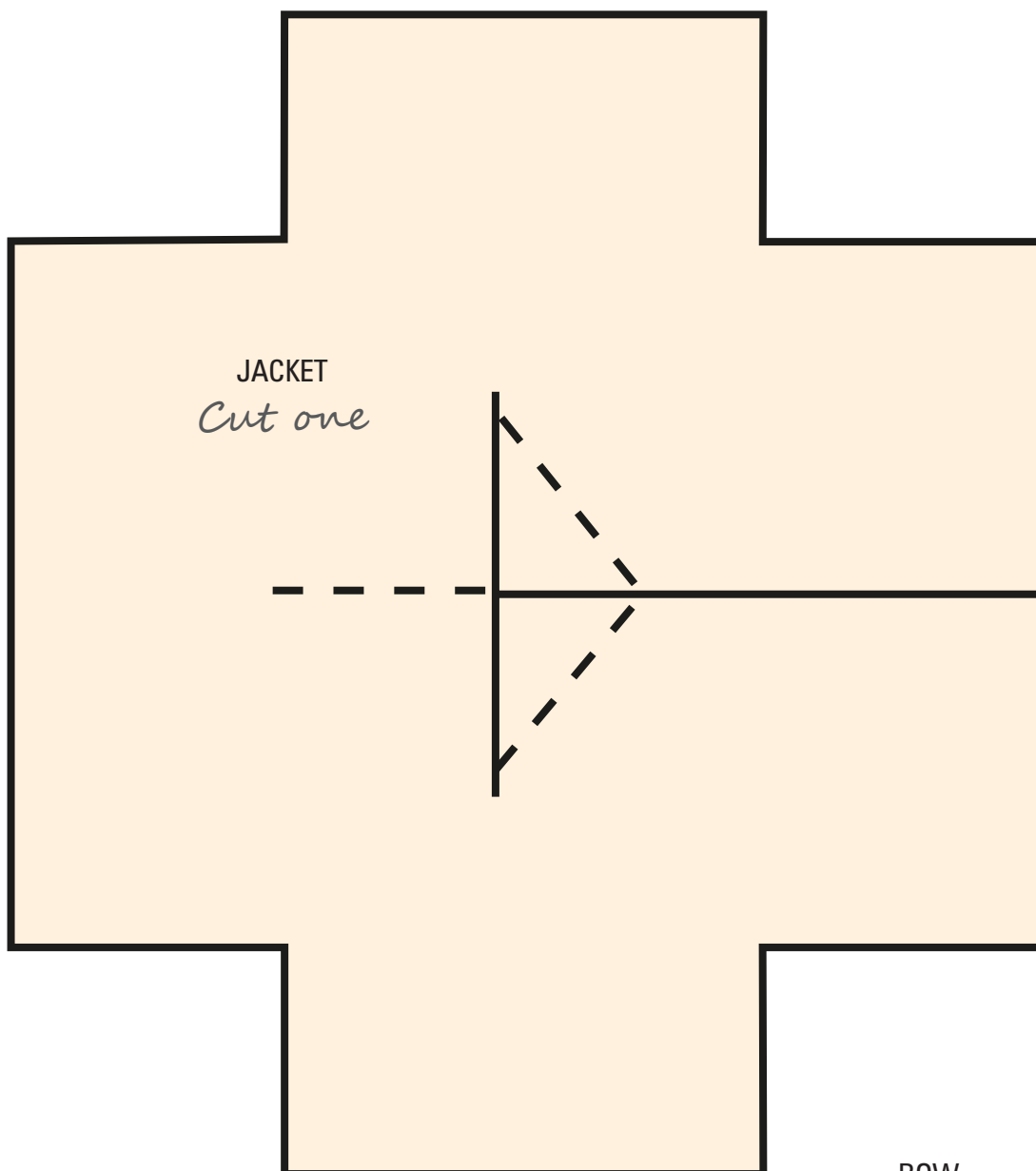
HOOD
Cut one



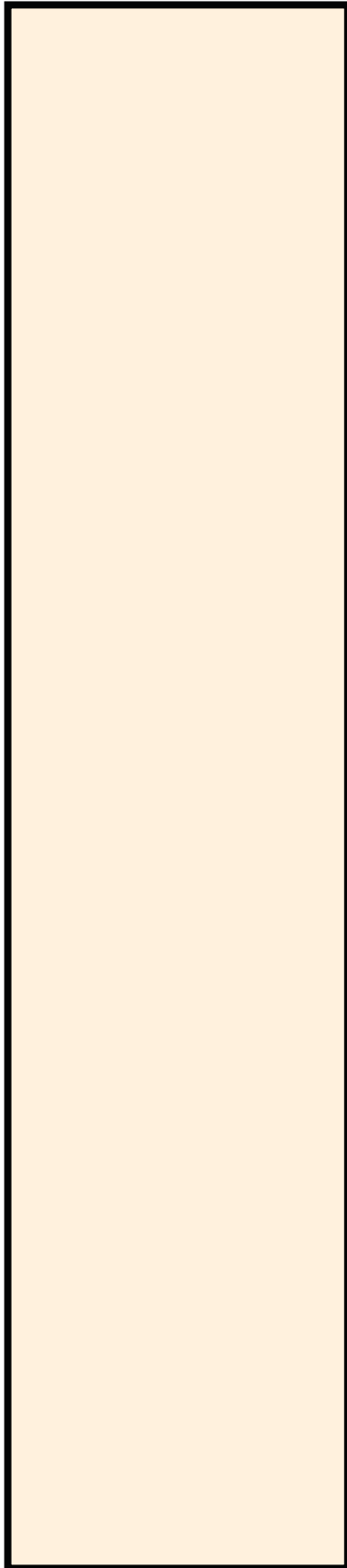
COAT
Cut one

Girl's outdoor clothes: skirt, jacket, satchel and bow

All templates are shown at actual size.



SKIRT
Cut two



SKIRT WAISTBAND
Cut one

