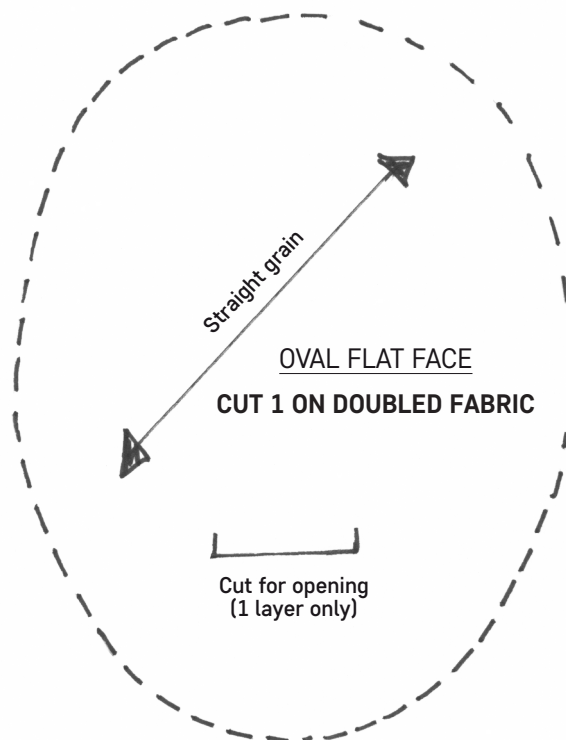
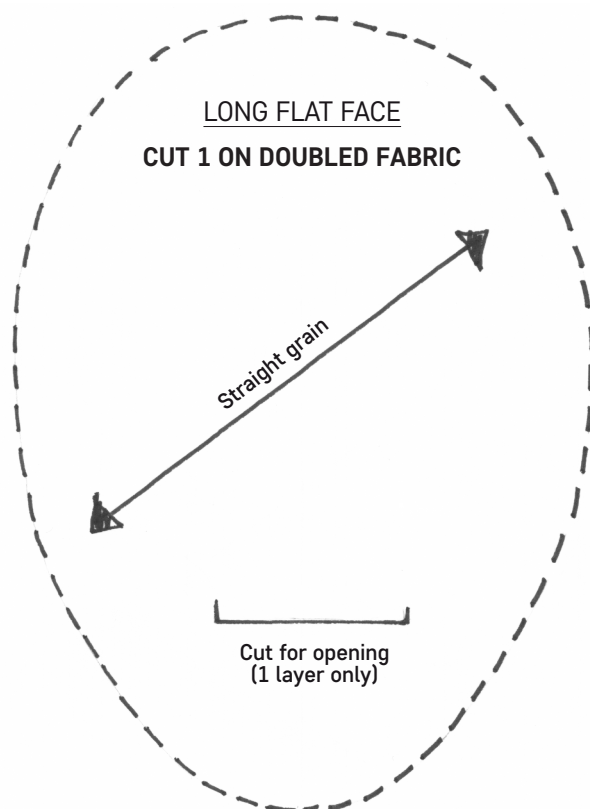


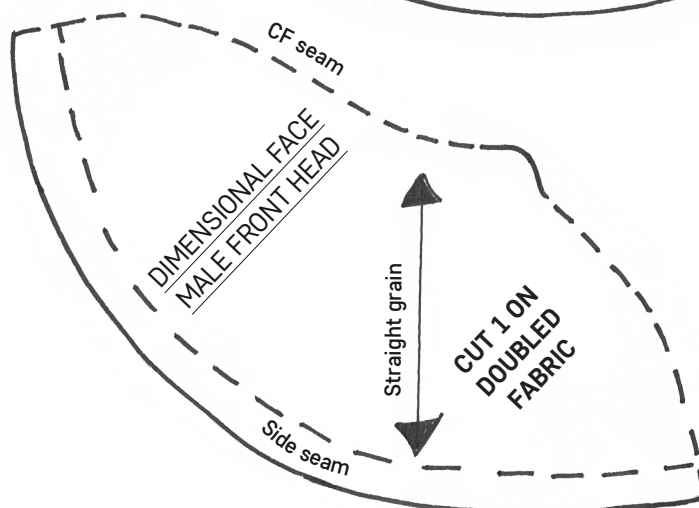
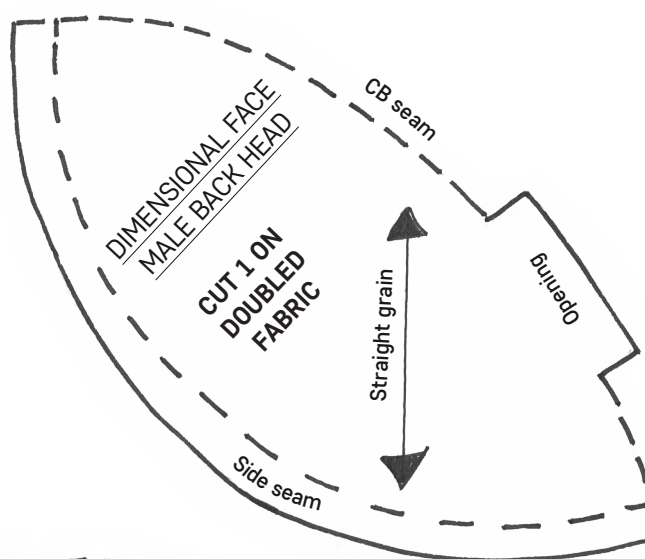
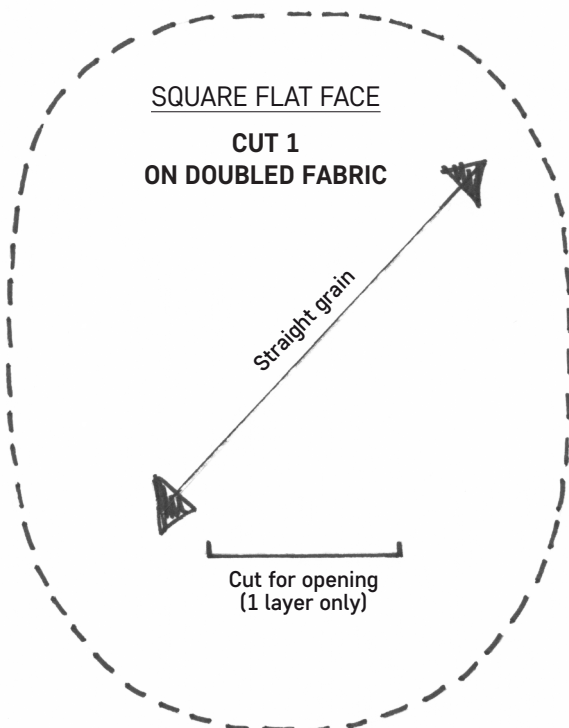
Templates

All templates are actual size and do not require scaling

Flat faceS (see page 58)



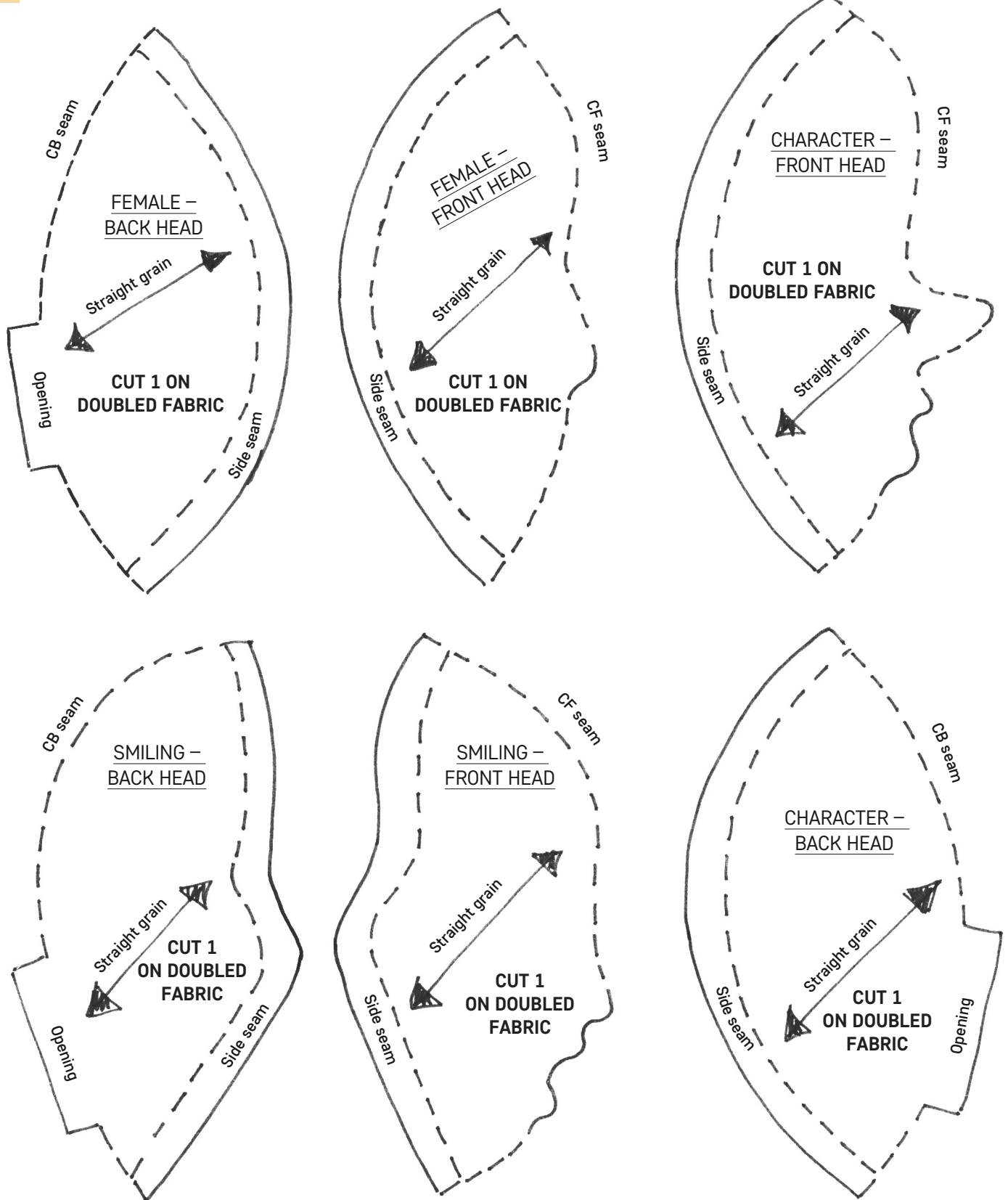
Dimensional faceS (see page 68)



Templates - 2

All templates are actual size and do not require scaling

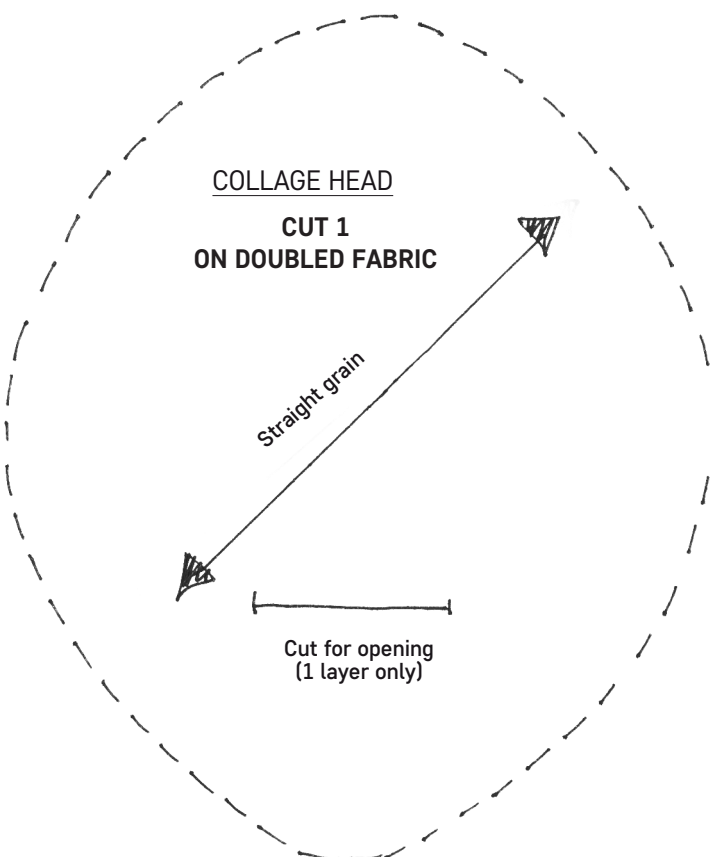
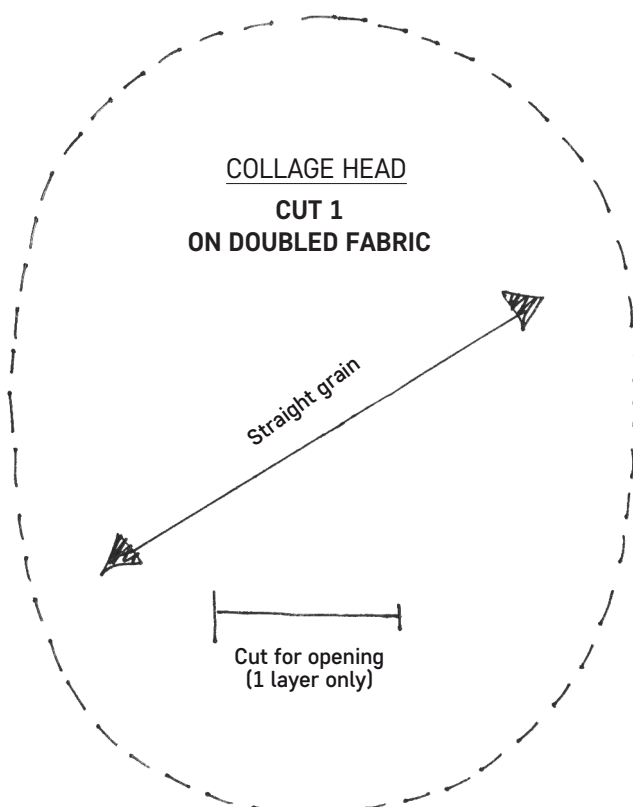
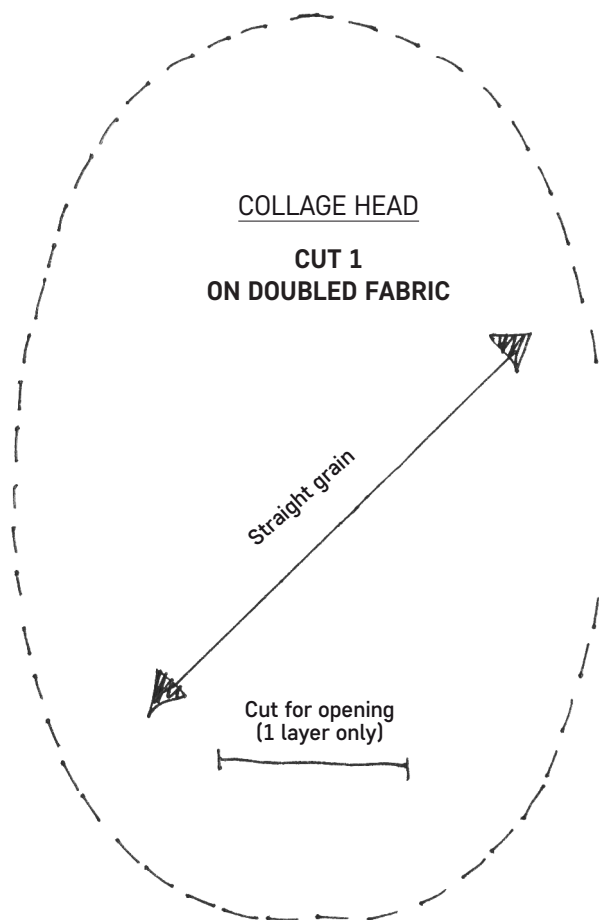
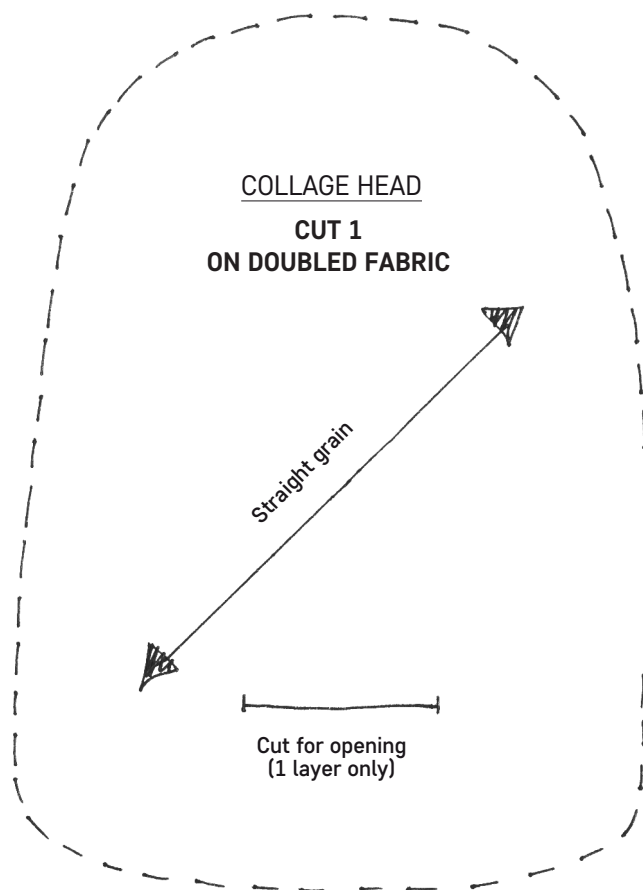
Dimensional faceS continued (see page 68)



Templates - 3

All templates are actual size and do not require scaling

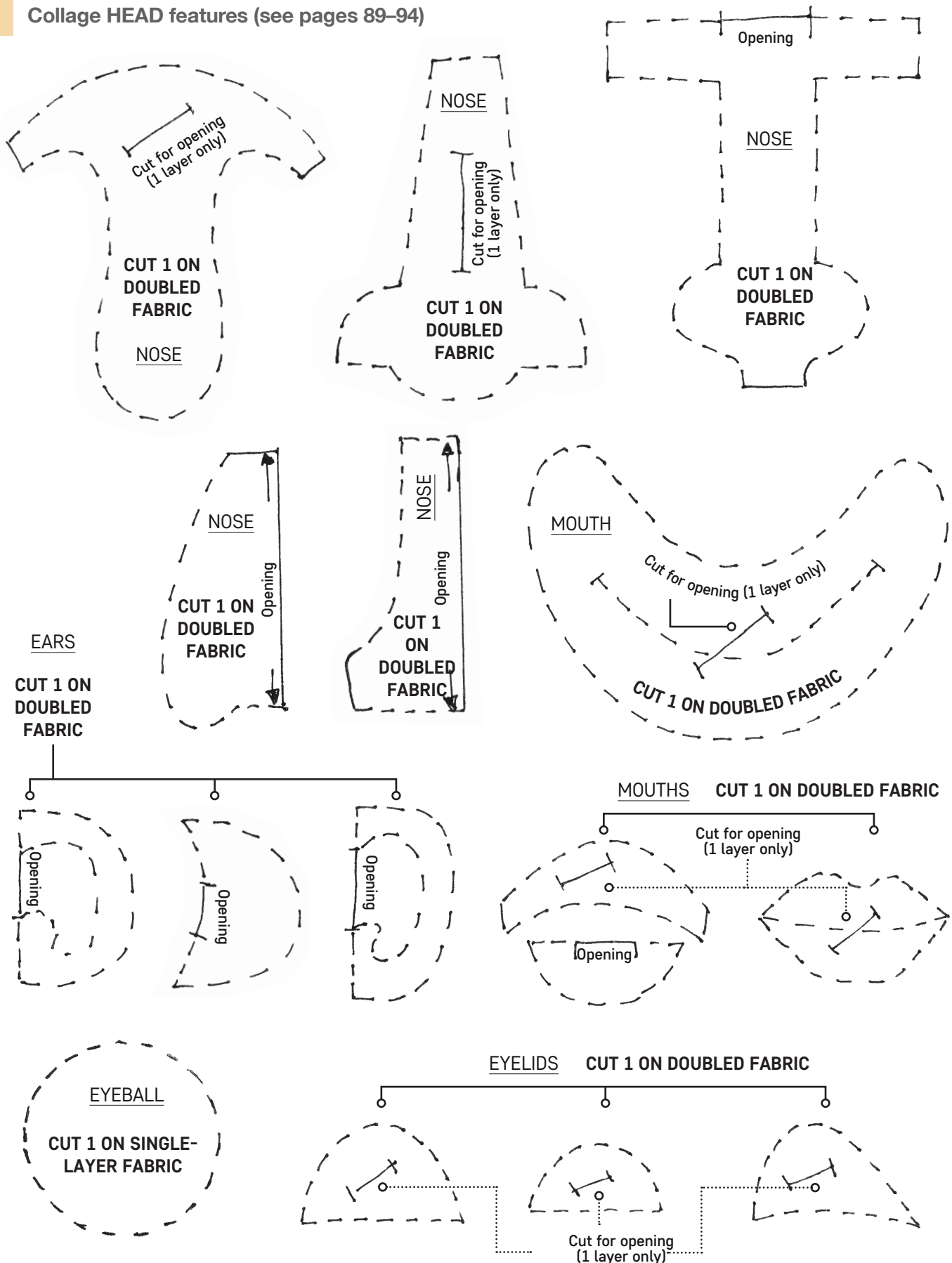
Collage HEADS (see page 88)



Templates - 4

All templates are actual size and do not require scaling

Collage HEAD features (see pages 89–94)



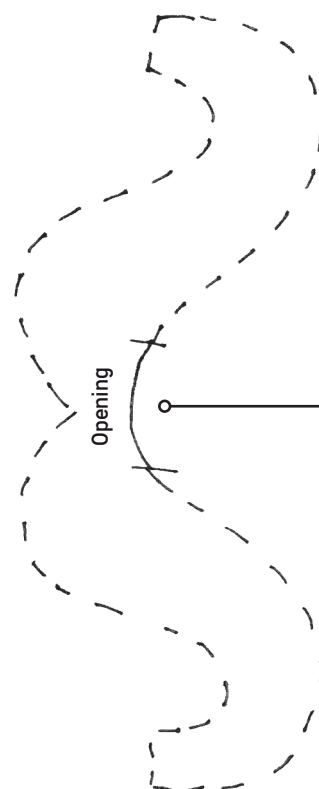
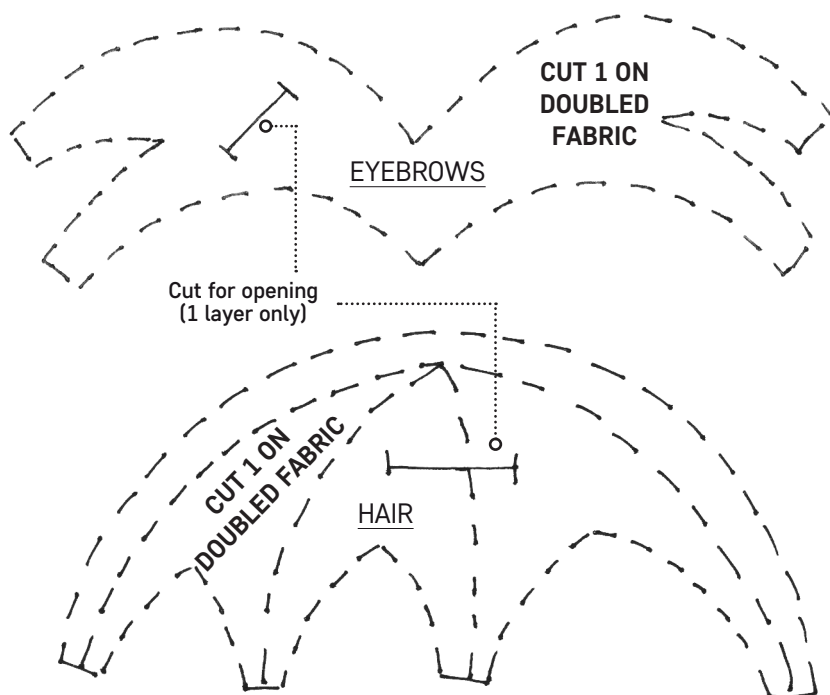
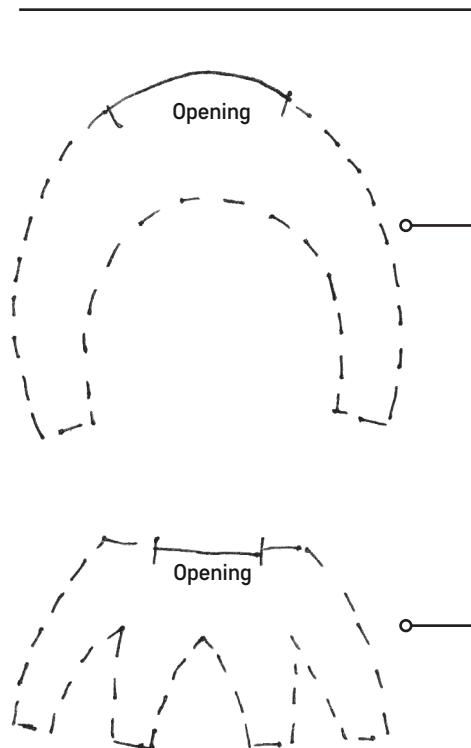
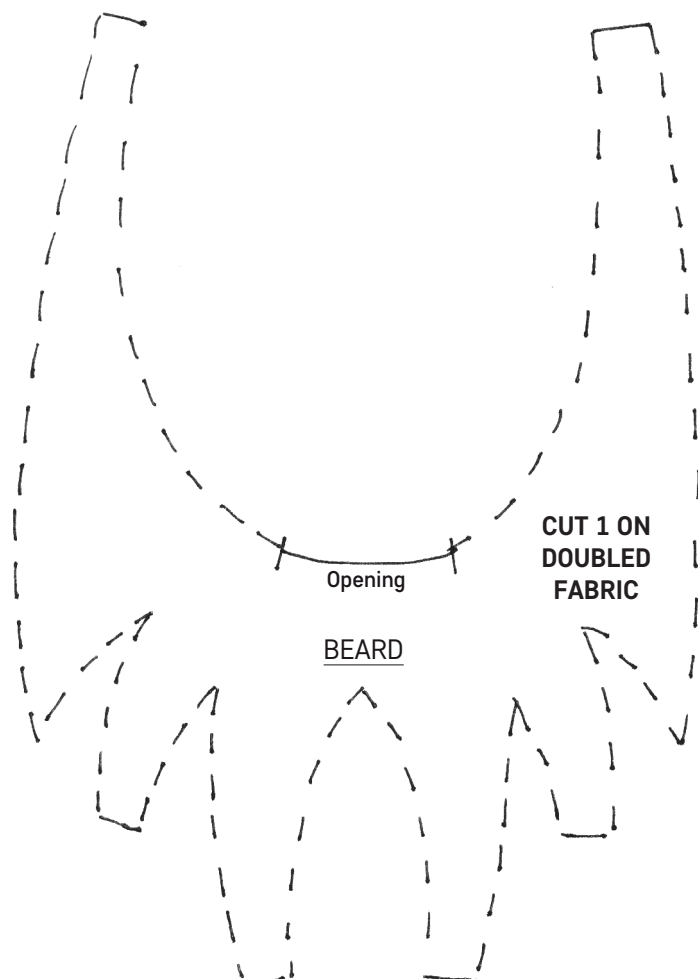
Templates - 5

All templates are actual size and do not require scaling

Collage HEAD features Continued (see page 90)

MOUSTACHES

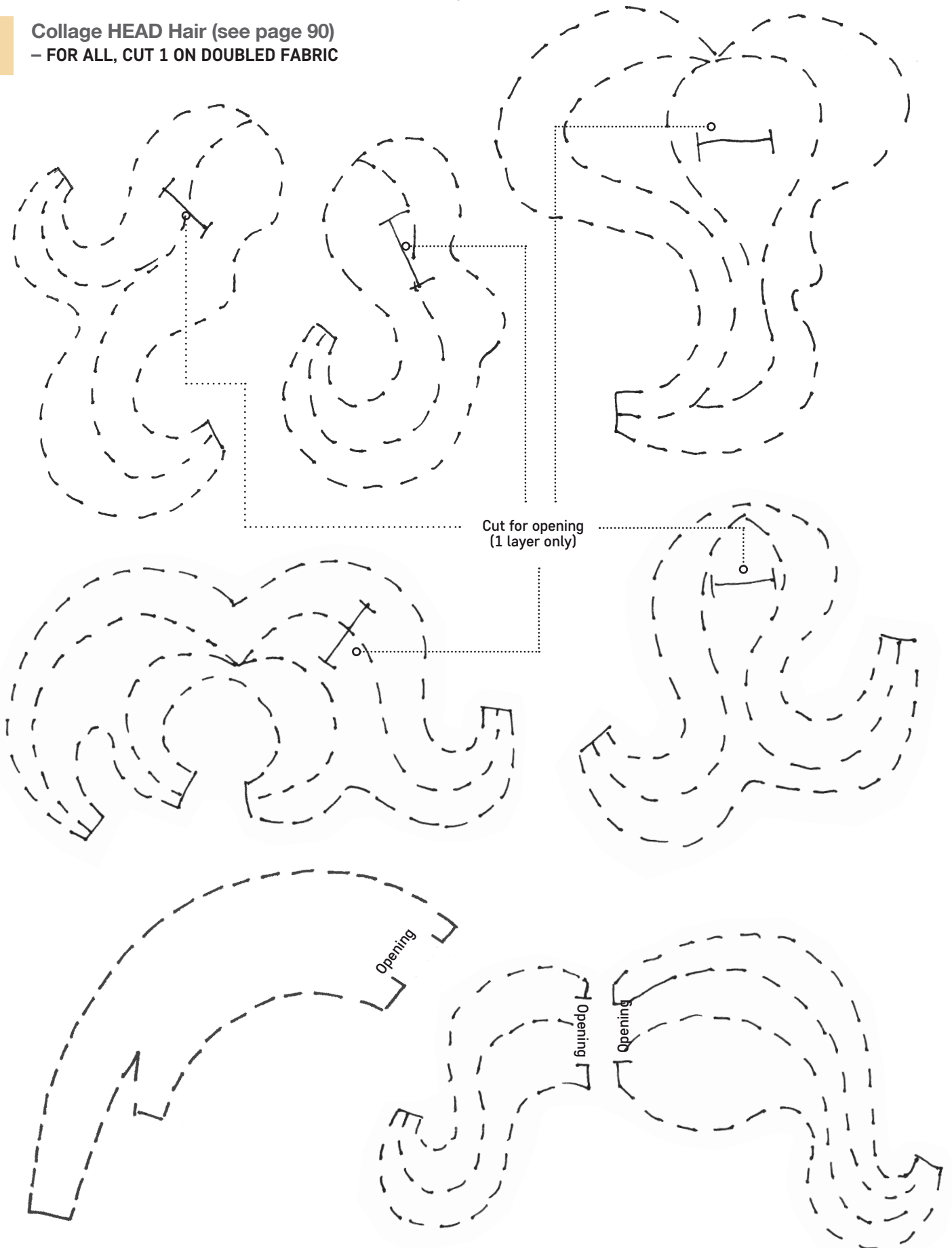
CUT 1 ON DOUBLED FABRIC



Templates - 6

All templates are actual size and do not require scaling

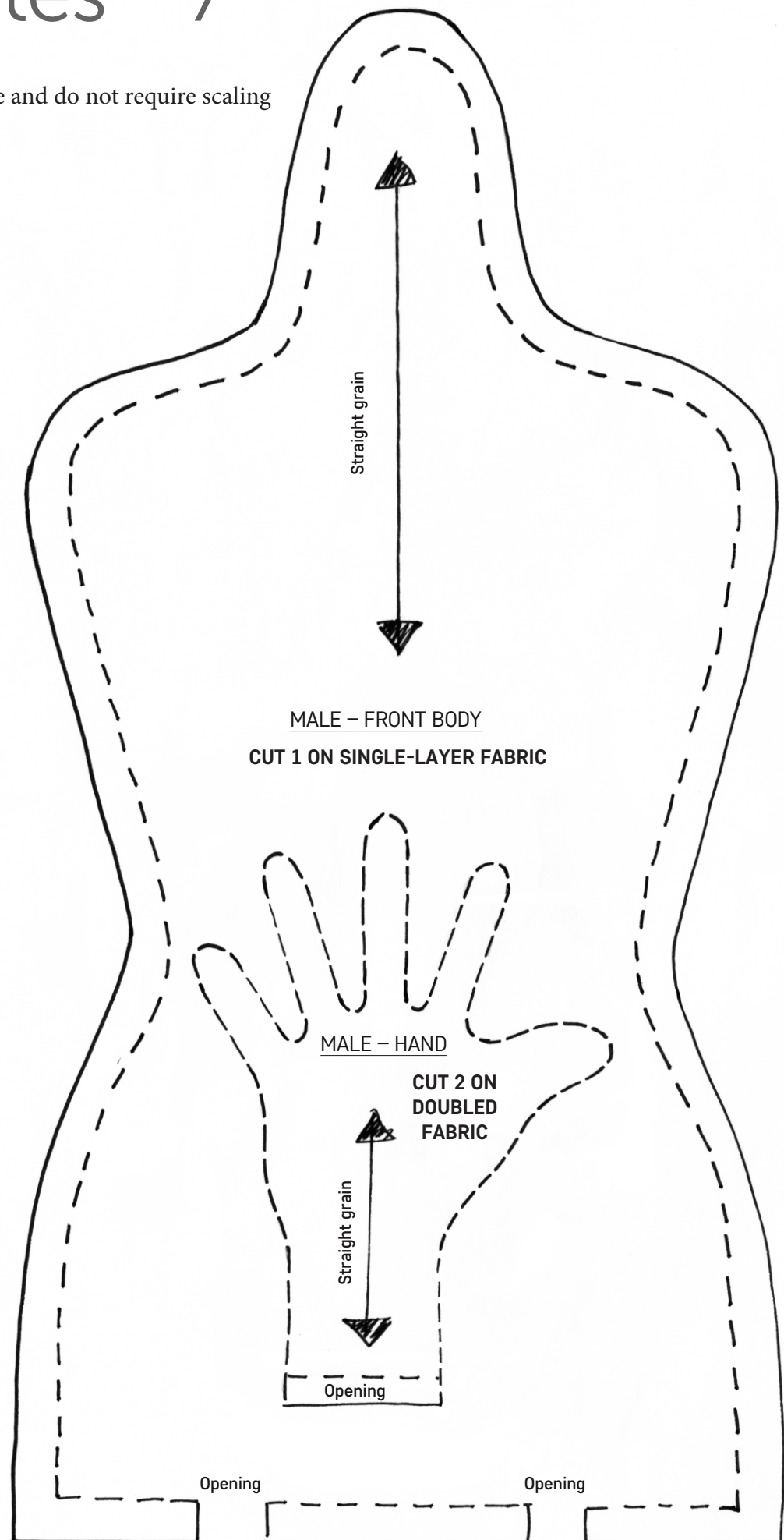
Collage HEAD Hair (see page 90)
– FOR ALL, CUT 1 ON DOUBLED FABRIC



Templates - 7

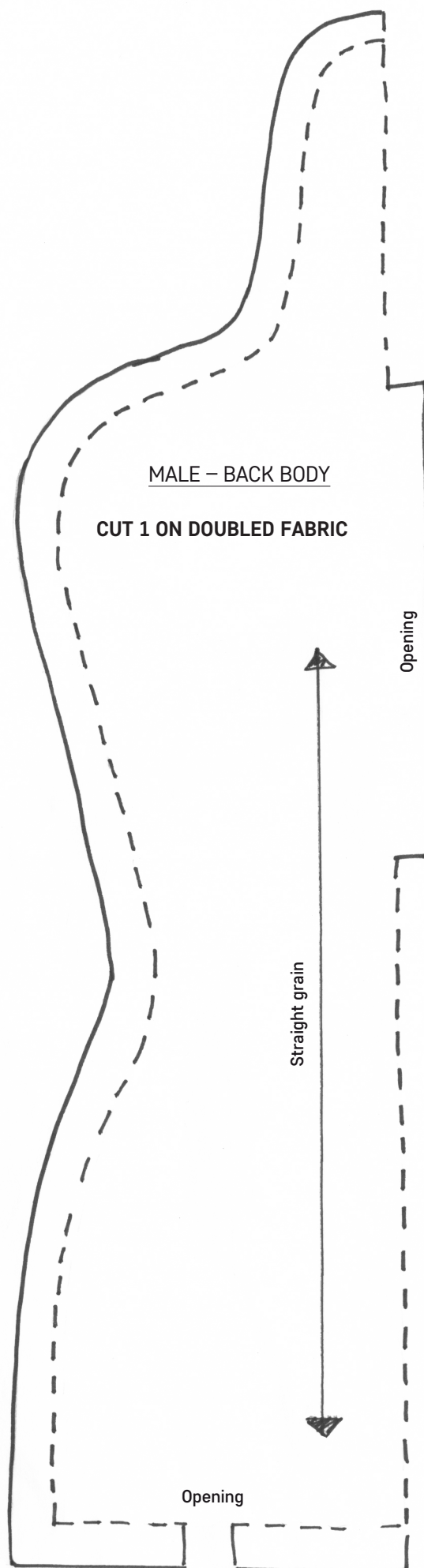
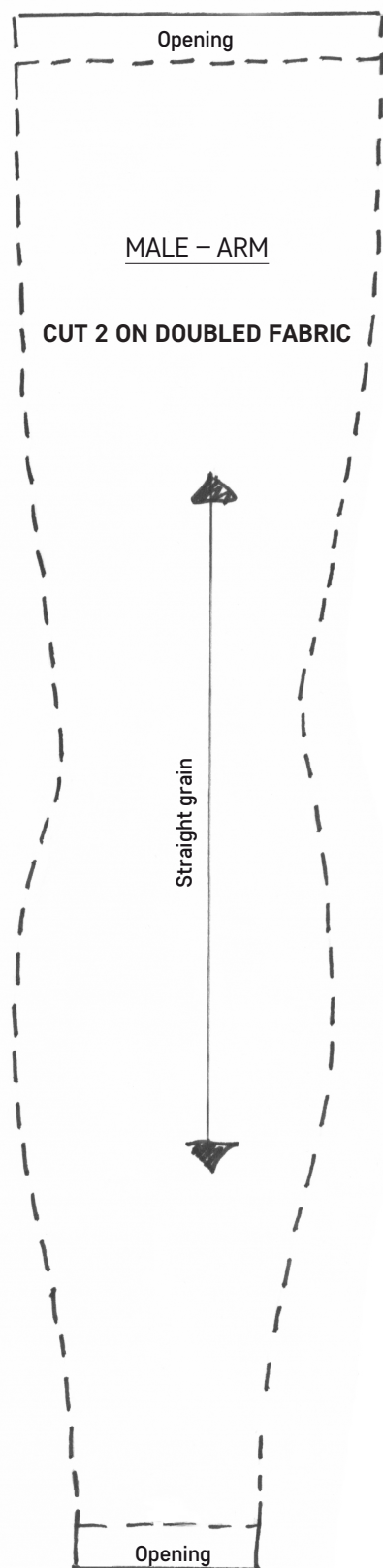
All templates are actual size and do not require scaling

Basic male doll
(see pages 106–113)



Templates - 8

All templates are actual size and do not require scaling



Templates - 9

All templates are actual size and do not require scaling

Basic male doll continued
(see pages 106–113)

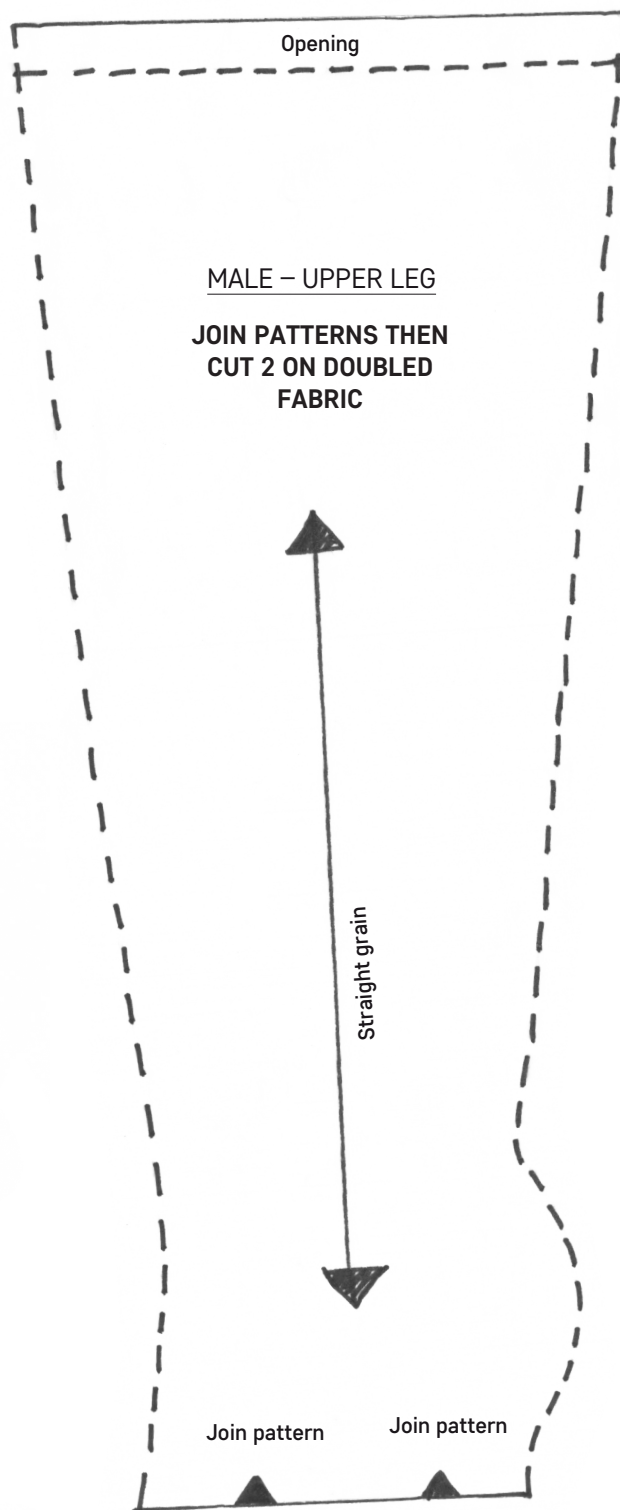
MALE – FAIRY EAR

SEE PAGES 82 AND 83
CUT 2 ON DOUBLED FABRIC



MALE – UPPER LEG

JOIN PATTERNS THEN CUT 2 ON DOUBLED FABRIC



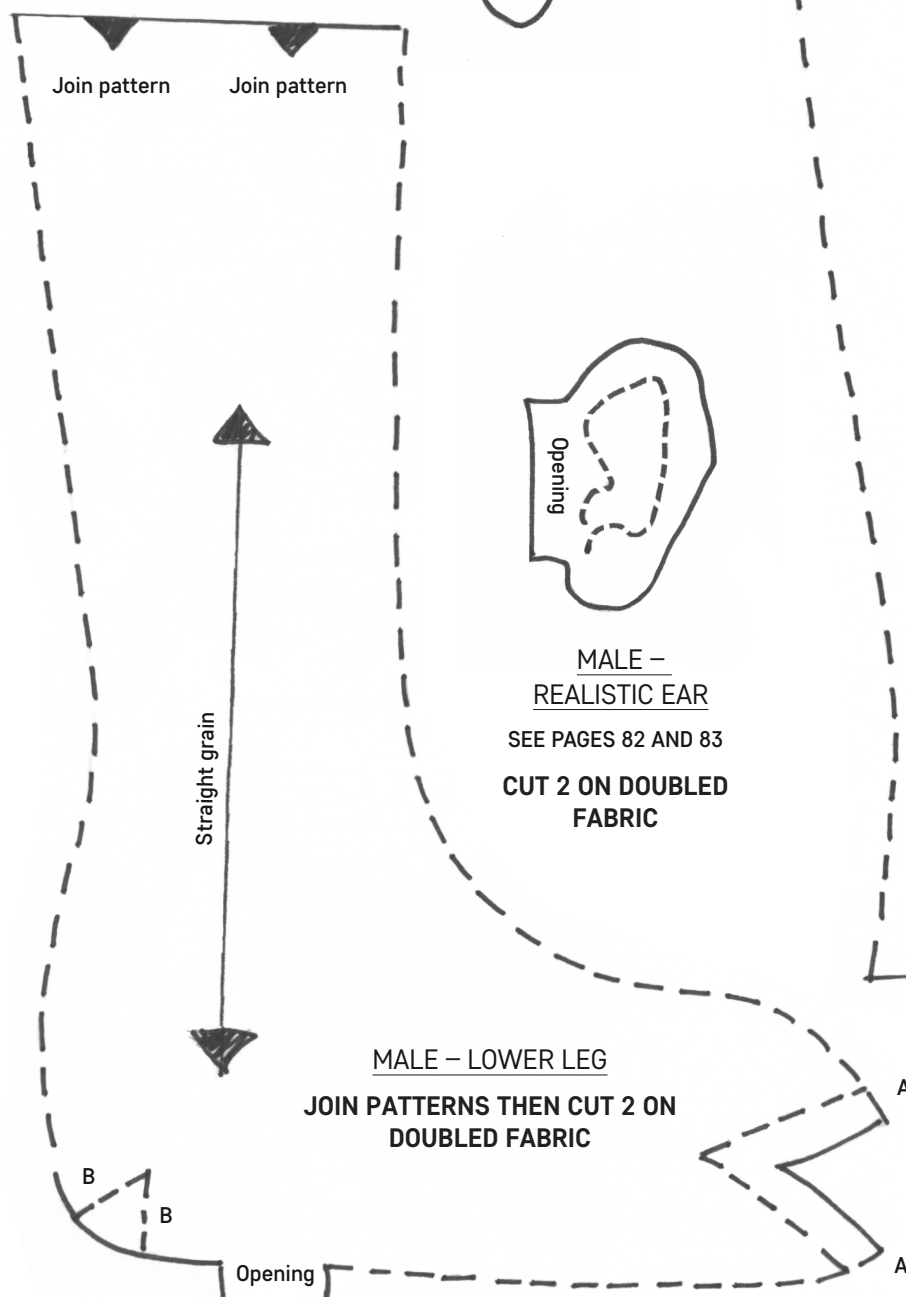
MALE – REALISTIC EAR

SEE PAGES 82 AND 83
CUT 2 ON DOUBLED FABRIC



MALE – LOWER LEG

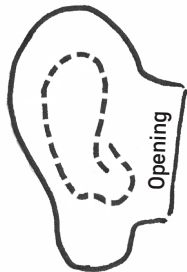
JOIN PATTERNS THEN CUT 2 ON DOUBLED FABRIC



Templates - 10

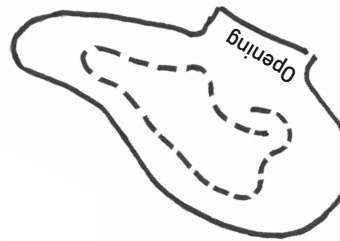
All templates are actual size and do not require scaling

Basic female doll
(see pages 109–113)



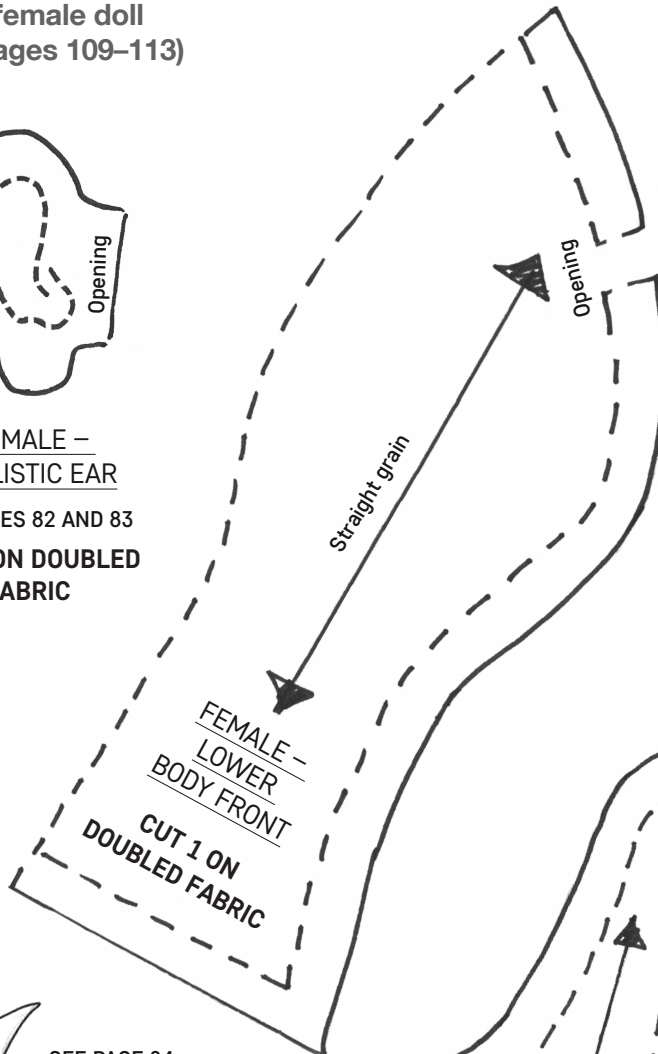
FEMALE –
REALISTIC EAR

SEE PAGES 82 AND 83
**CUT 2 ON DOUBLED
FABRIC**



FEMALE –
FAIRY EAR

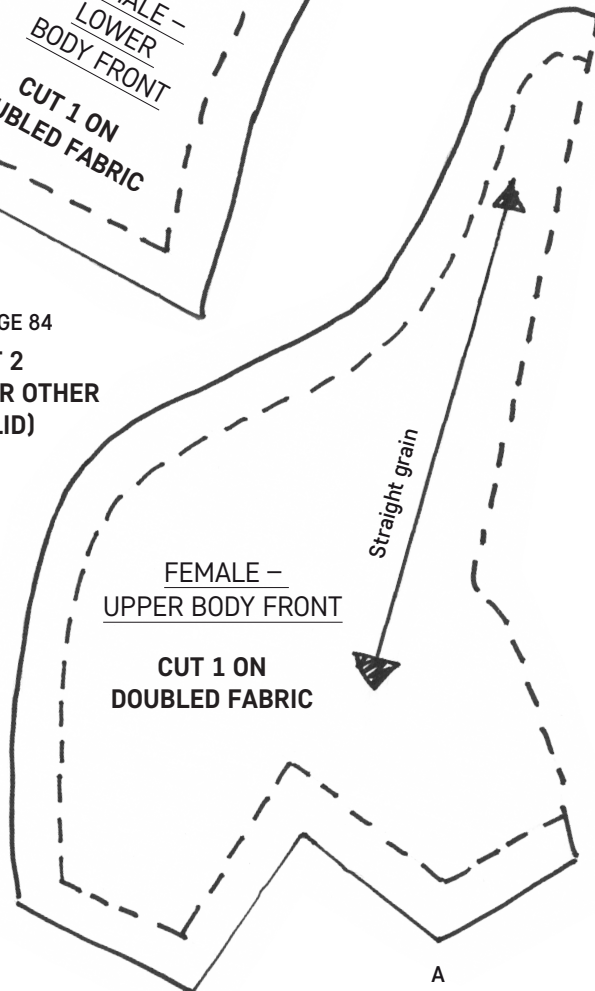
SEE PAGES 82 AND 83
**CUT 2 ON
DOUBLED FABRIC**



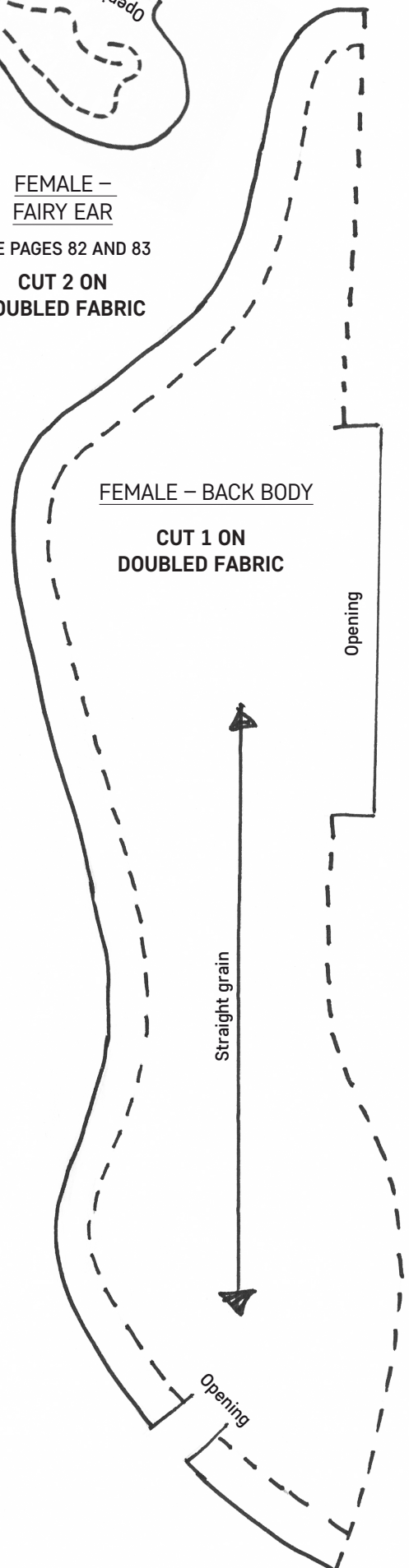
FEMALE –
LOWER
BODY FRONT
**CUT 1 ON
DOUBLED FABRIC**



SEE PAGE 84
**CUT 2
(FLIP 1 FOR OTHER
EYELID)**



FEMALE –
UPPER BODY FRONT
**CUT 1 ON
DOUBLED FABRIC**



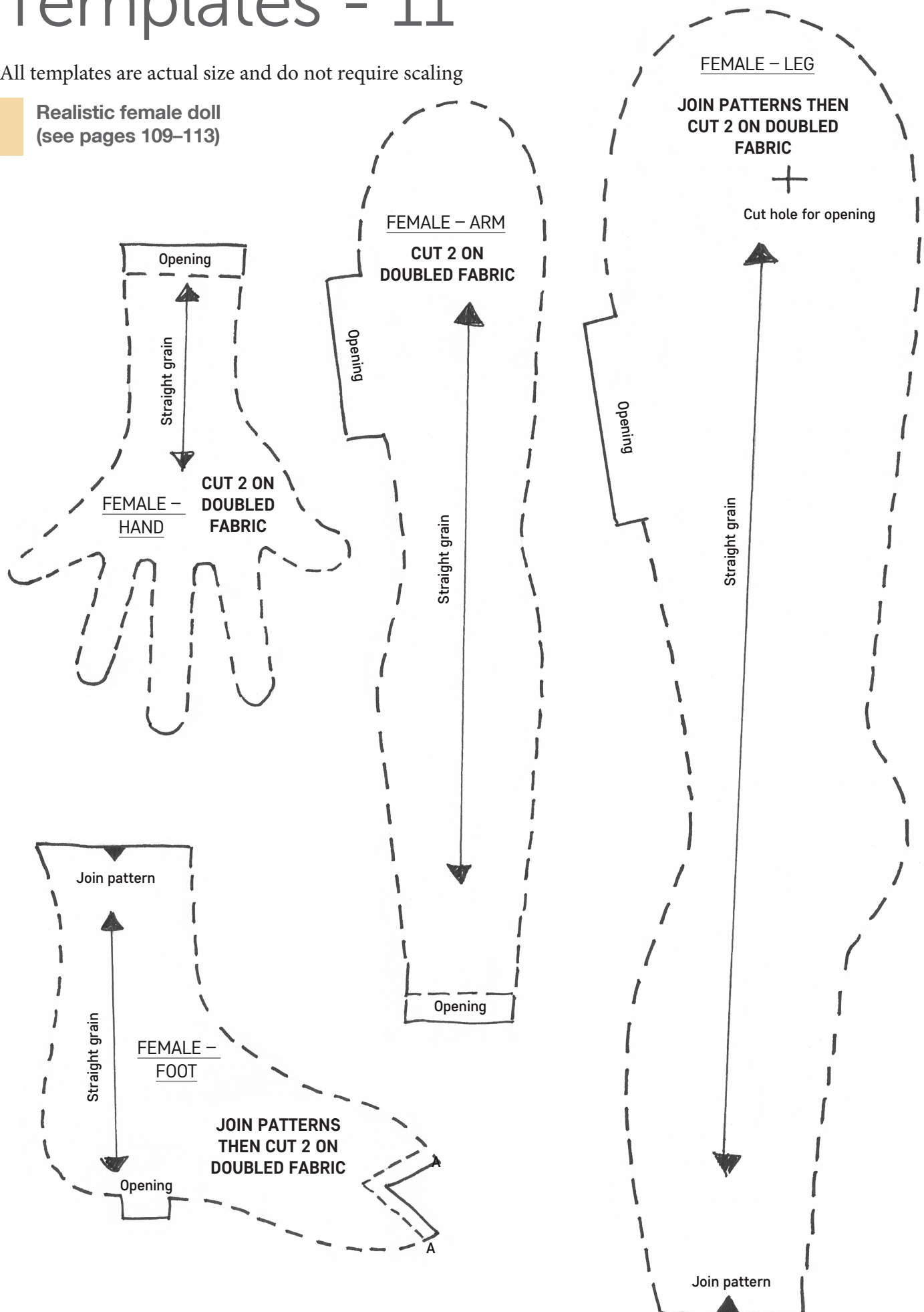
FEMALE – BACK BODY

**CUT 1 ON
DOUBLED FABRIC**

Templates - 11

All templates are actual size and do not require scaling

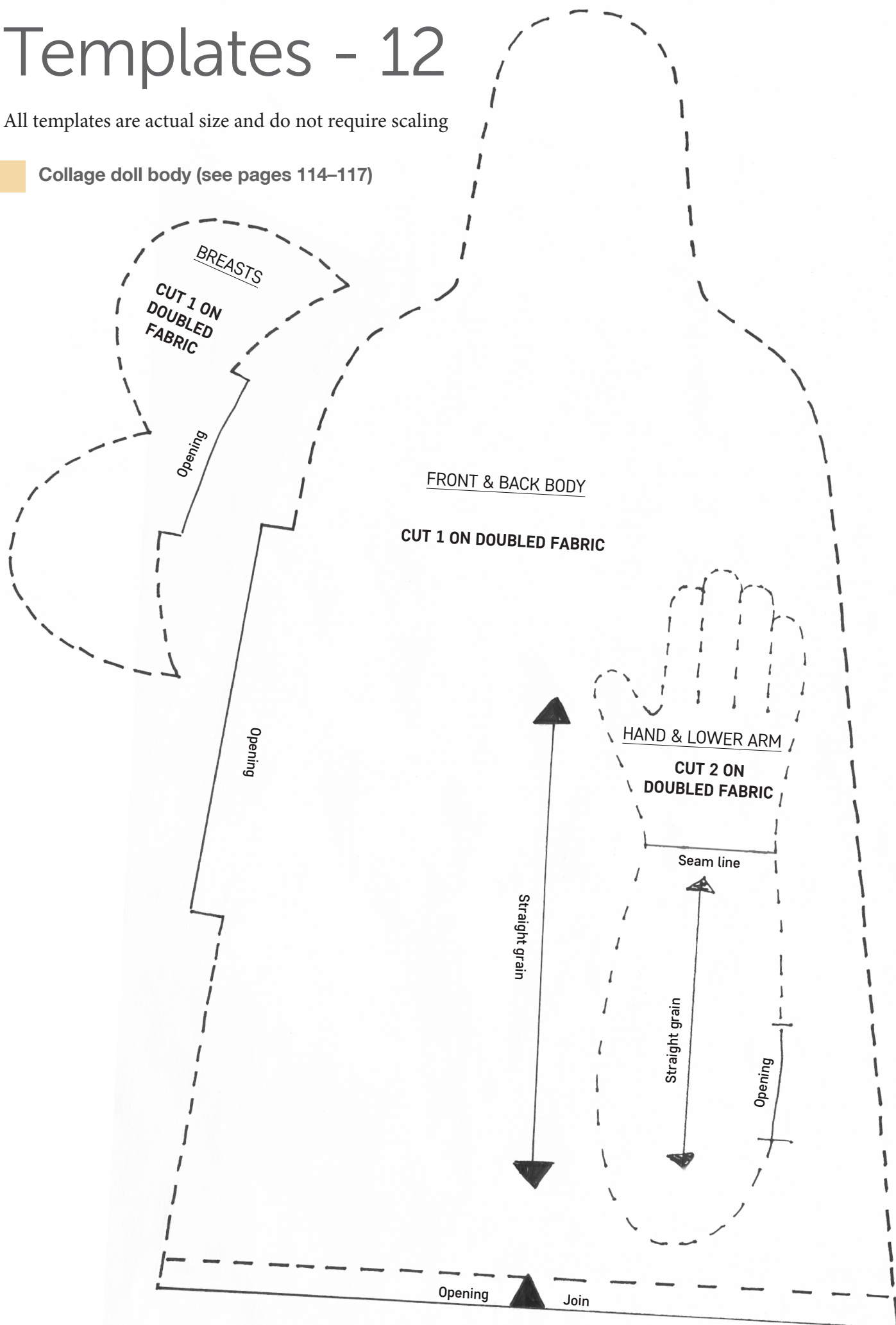
Realistic female doll
(see pages 109–113)



Templates - 12

All templates are actual size and do not require scaling

Collage doll body (see pages 114–117)



Templates - 13

All templates are actual size and do not require scaling

Collage body continued (see pages 114–117)

