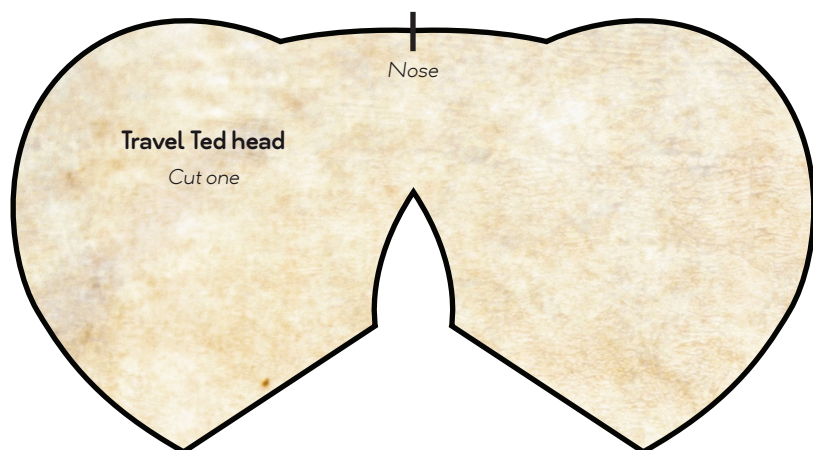
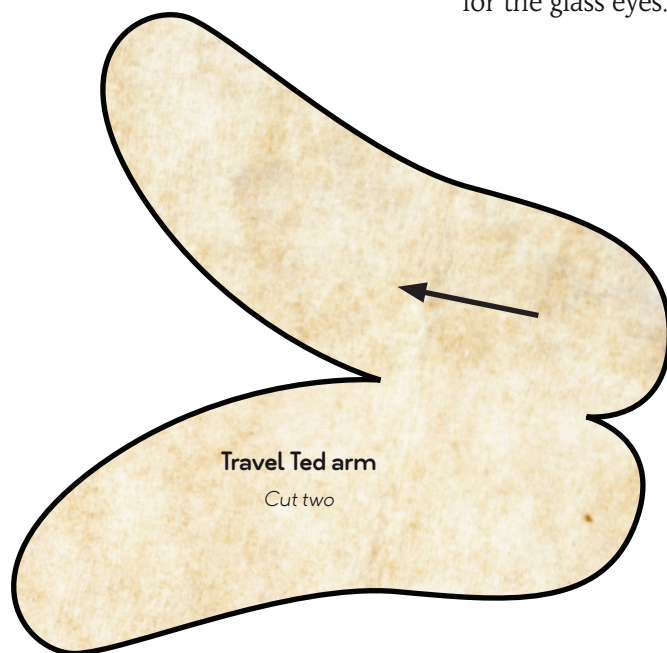
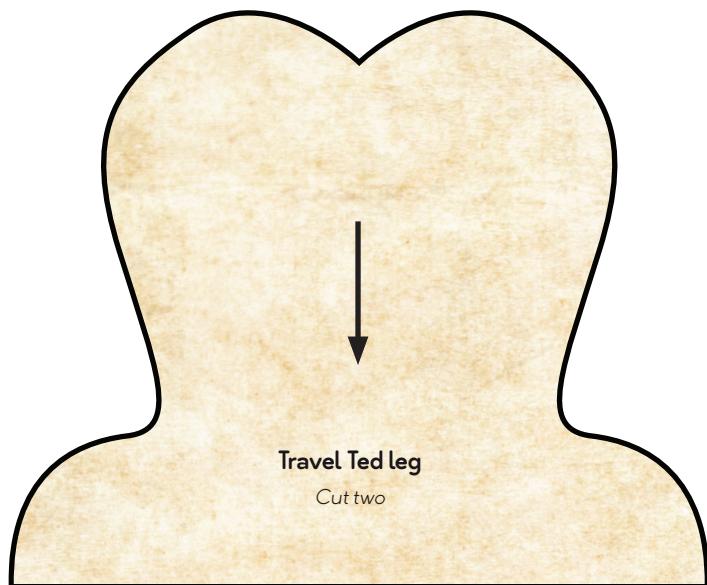


TEMPLATES

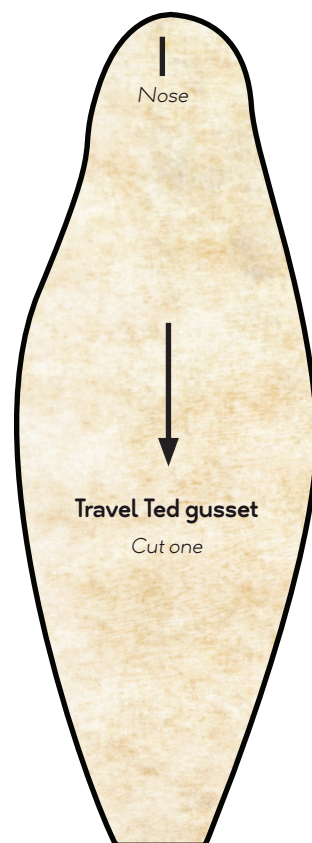
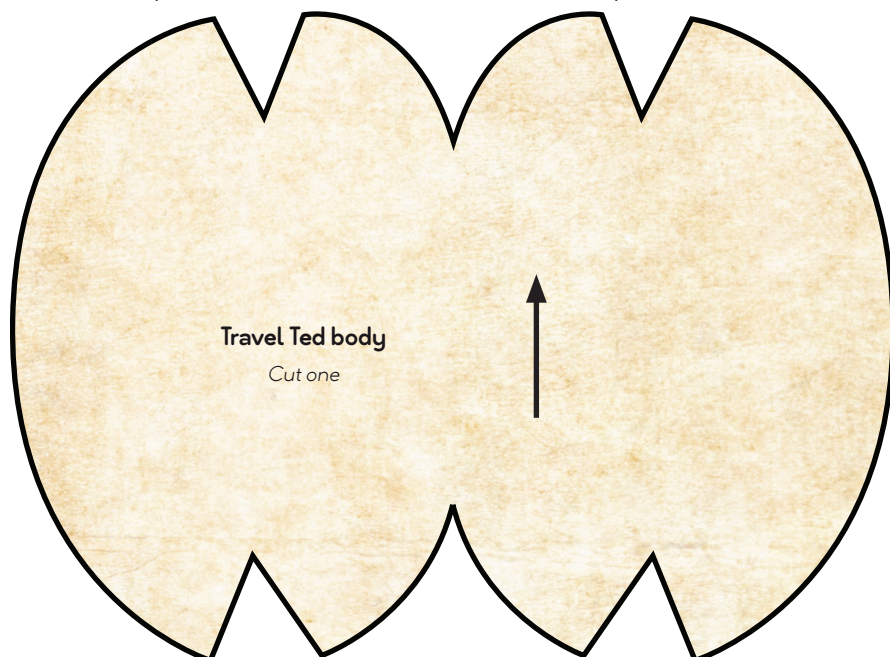
TRAVEL TED TEMPLATES

See pages 36–49 for this project.

These templates are all provided at actual size, and include the seam allowance. Arrows, where present, indicate the grain of the fabric, while dots indicate positions of the cotter pins for head and limb joints, or for the glass eyes.



Travel Ted ear
Cut four

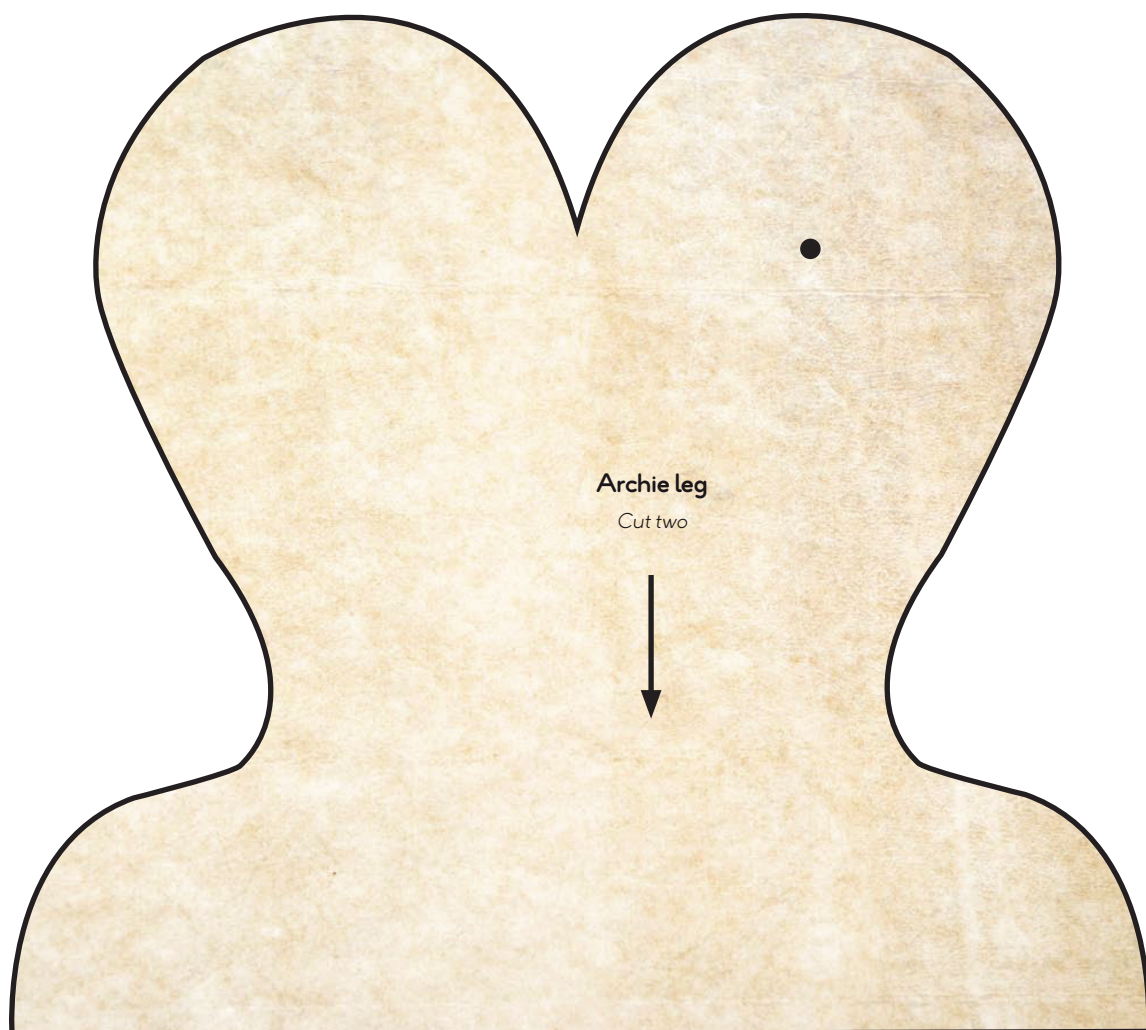
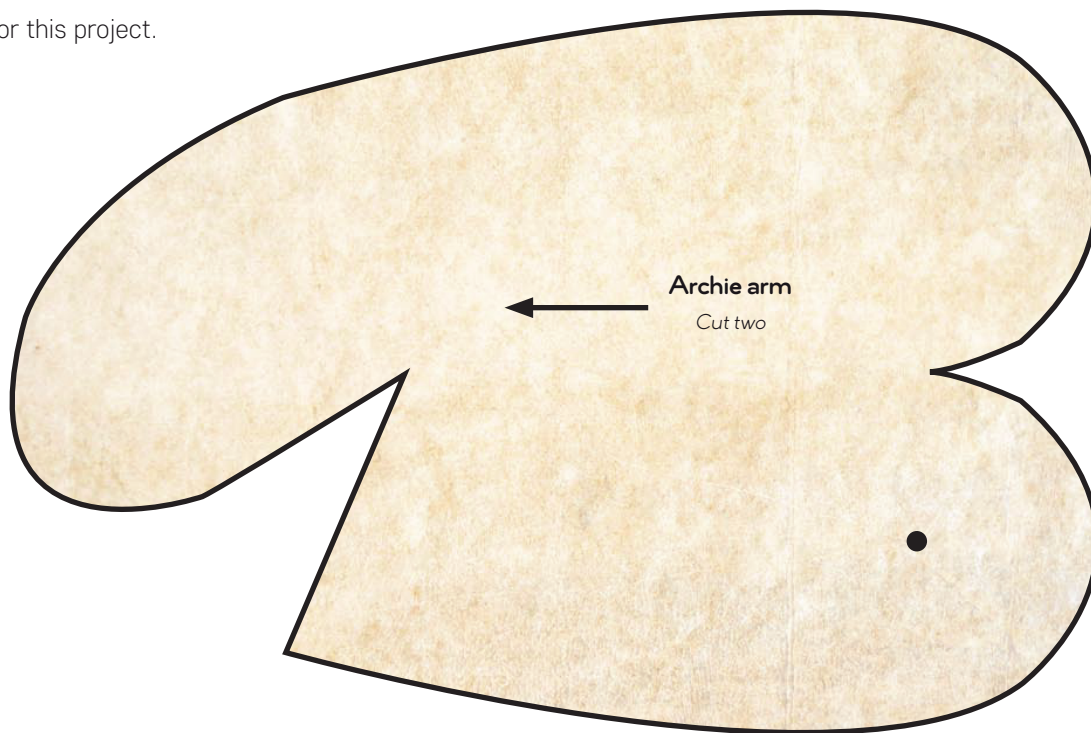


TEMPLATES 2

ARCHIE TEMPLATES

See pages 50–65 for this project.

These templates are all provided at actual size, and include the seam allowance. Arrows, where present, indicate the grain of the fabric, while dots indicate positions of the cotter pins for head and limb joints, or for the glass eyes.

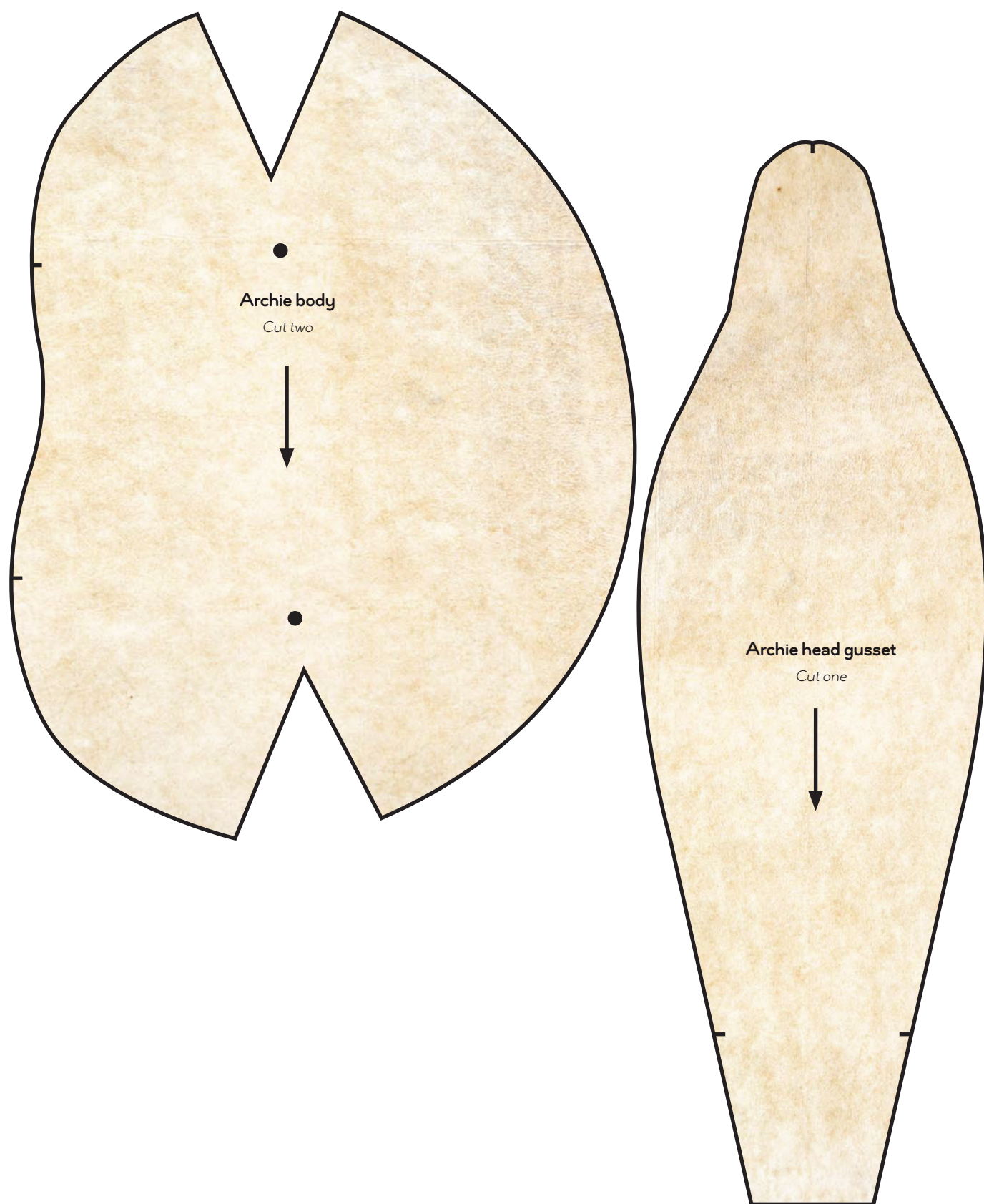


TEMPLATES 3

ARCHIE TEMPLATES

See pages 50–65 for this project.

These templates are all provided at actual size, and include the seam allowance. Arrows, where present, indicate the grain of the fabric, while dots indicate positions of the cotter pins for head and limb joints, or for the glass eyes.

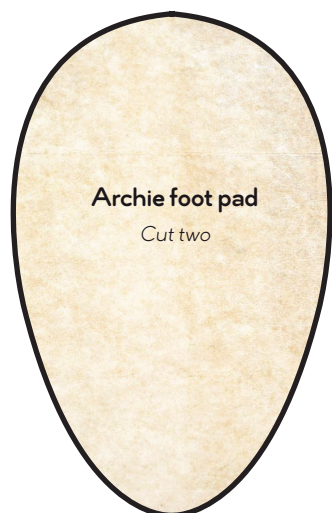
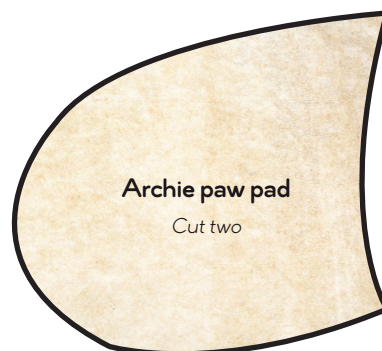
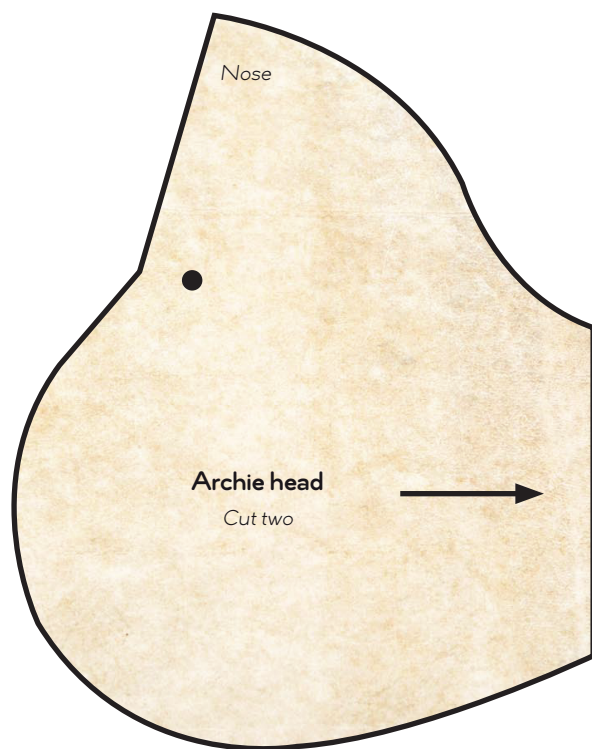


TEMPLATES 4

ARCHIE TEMPLATES

See pages 50–65 for this project.

These templates are all provided at actual size, and include the seam allowance. Arrows, where present, indicate the grain of the fabric, while dots indicate positions of the cotter pins for head and limb joints, or for the glass eyes.

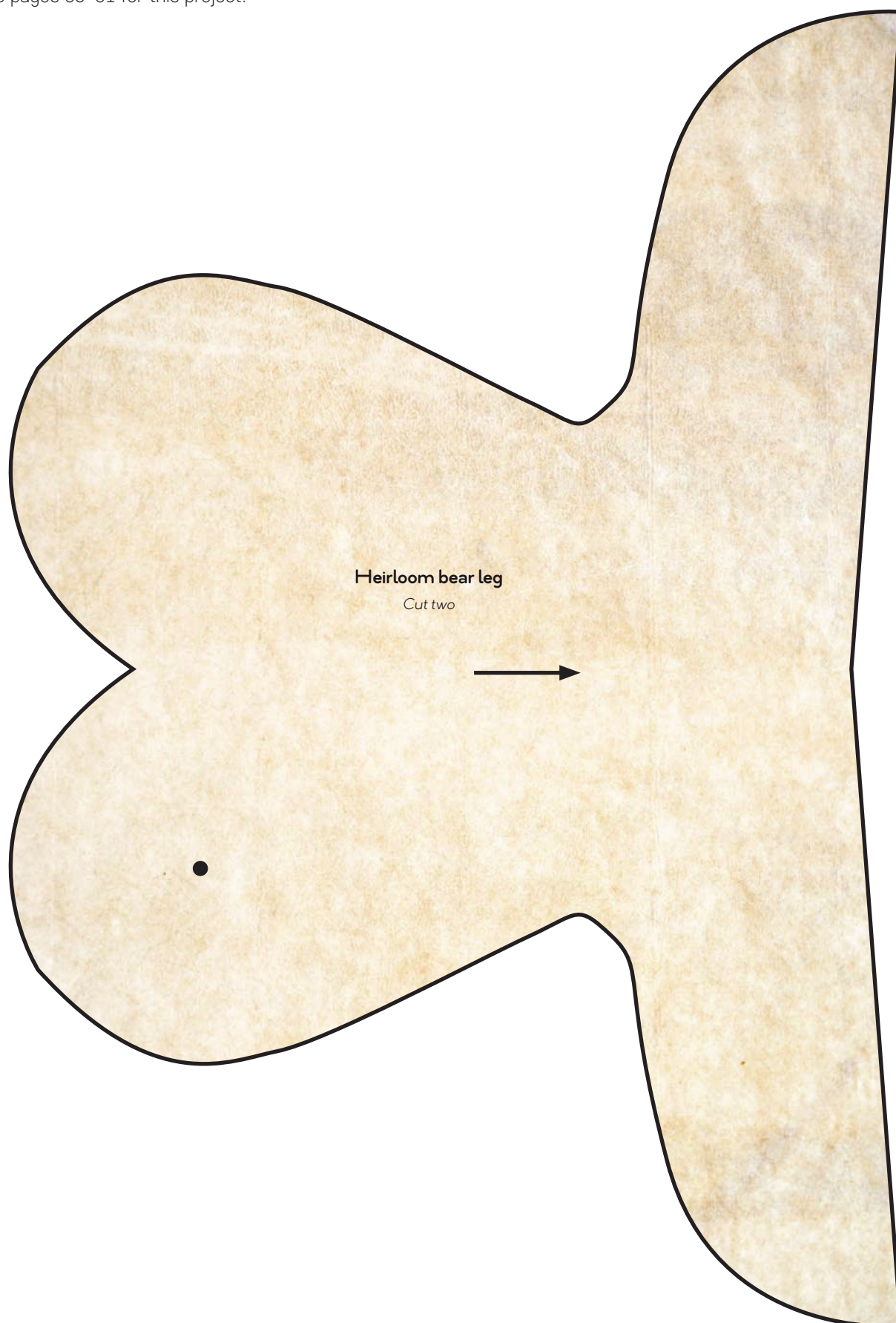


TEMPLATES 5

HEIRLOOM BEAR TEMPLATES

See pages 66–81 for this project.

These templates are all provided at actual size, and include the seam allowance. Arrows, where present, indicate the grain of the fabric, while dots indicate positions of the cotter pins for head and limb joints, or for the glass eyes.

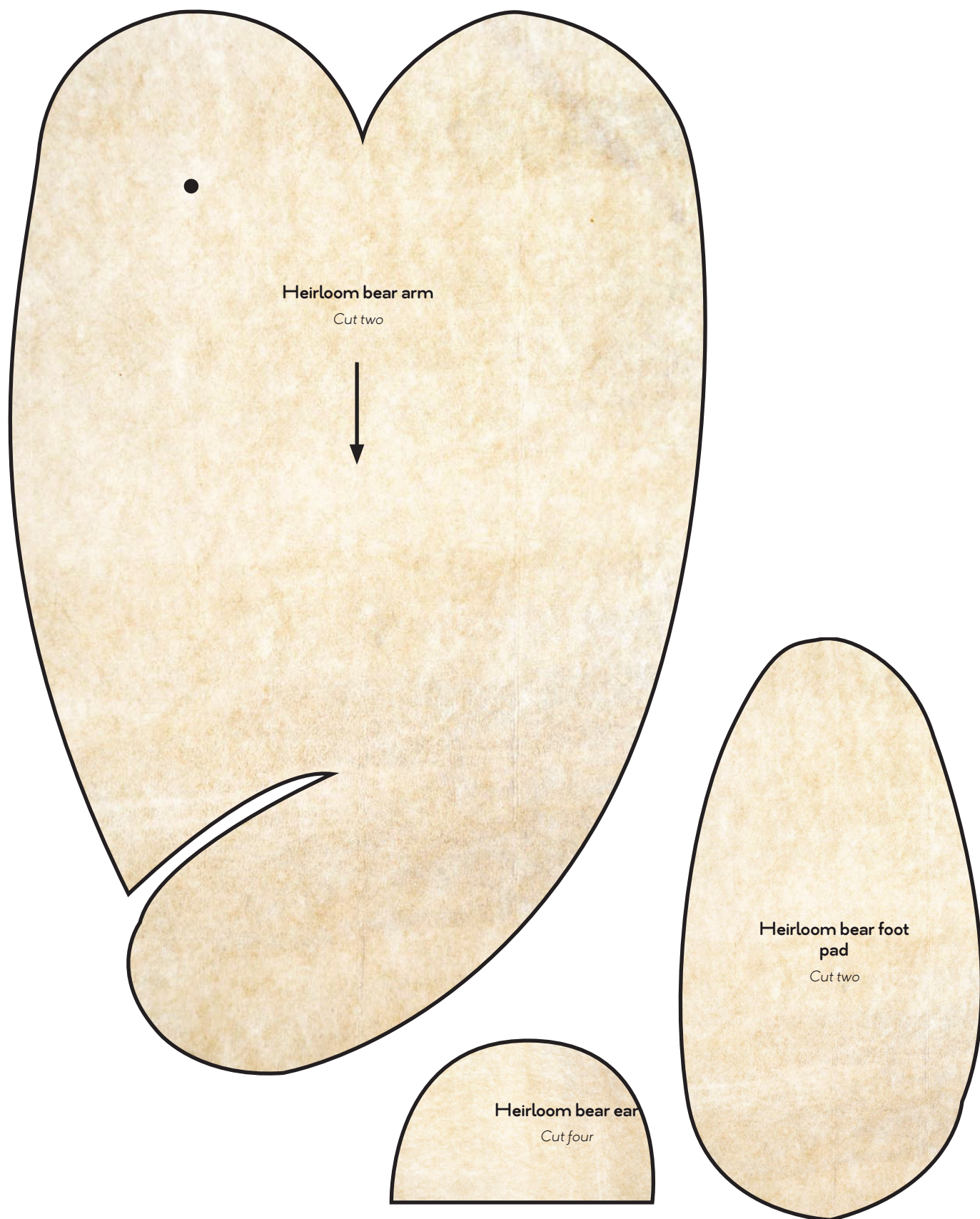


TEMPLATES 6

HEIRLOOM BEAR TEMPLATES

See pages 66–81 for this project.

These templates are all provided at actual size, and include the seam allowance. Arrows, where present, indicate the grain of the fabric, while dots indicate positions of the cotter pins for head and limb joints, or for the glass eyes.

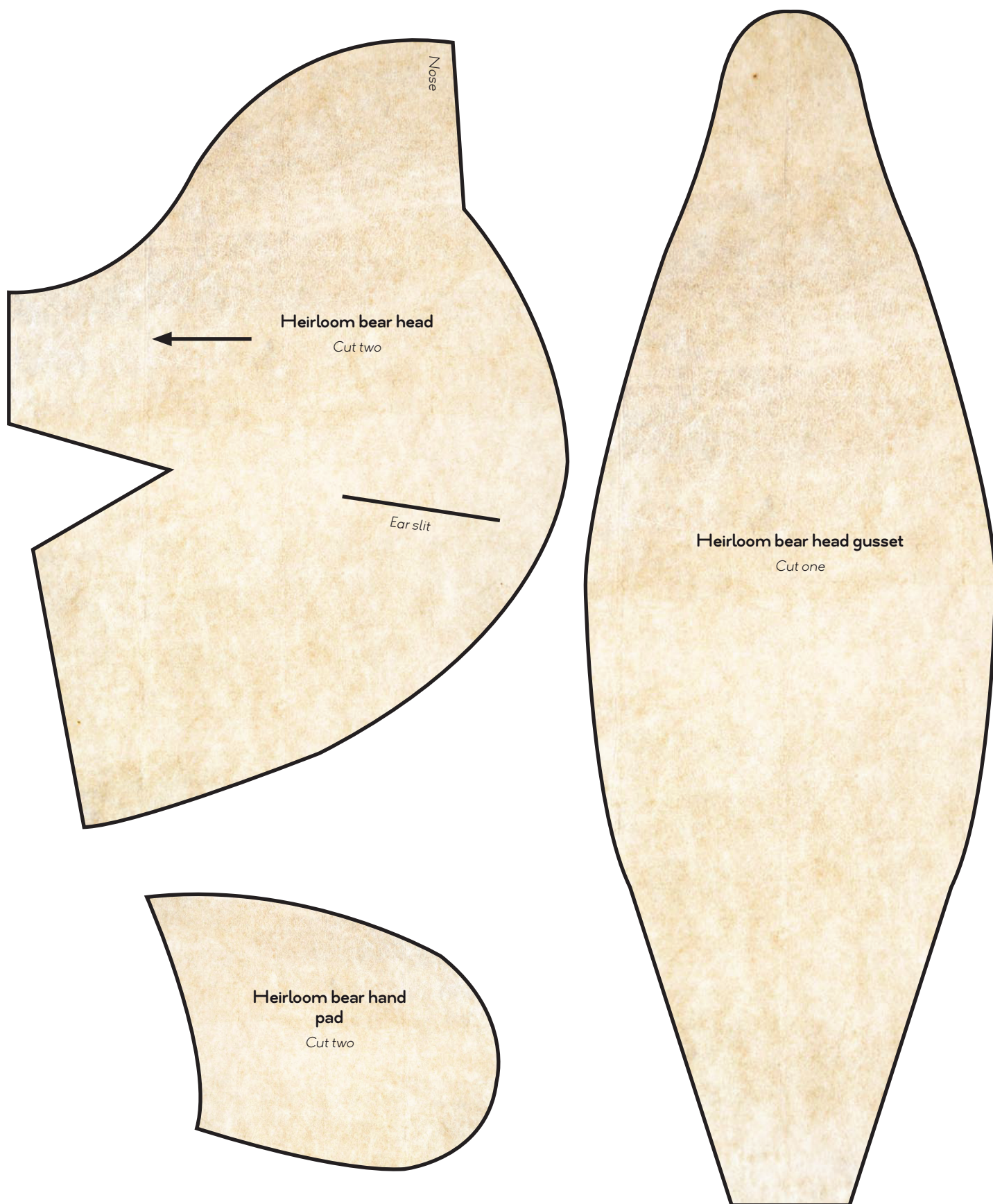


TEMPLATES 7

HEIRLOOM BEAR TEMPLATES

See pages 66–81 for this project.

These templates are all provided at actual size, and include the seam allowance. Arrows, where present, indicate the grain of the fabric, while dots indicate positions of the cotter pins for head and limb joints, or for the glass eyes.

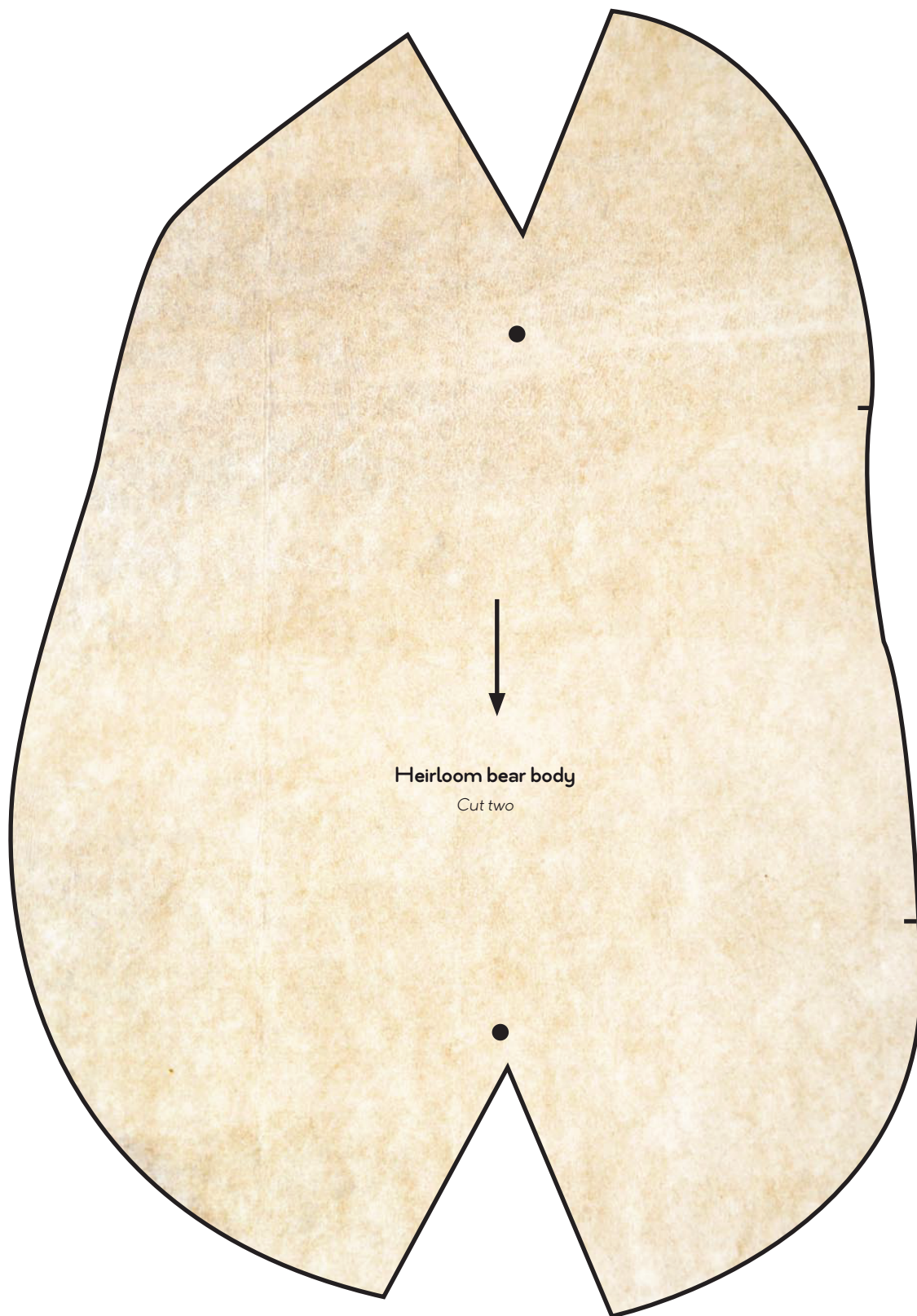


TEMPLATES 8

HEIRLOOM BEAR TEMPLATES

See pages 66–81 for this project.

These templates are all provided at actual size, and include the seam allowance. Arrows, where present, indicate the grain of the fabric, while dots indicate positions of the cotter pins for head and limb joints, or for the glass eyes.

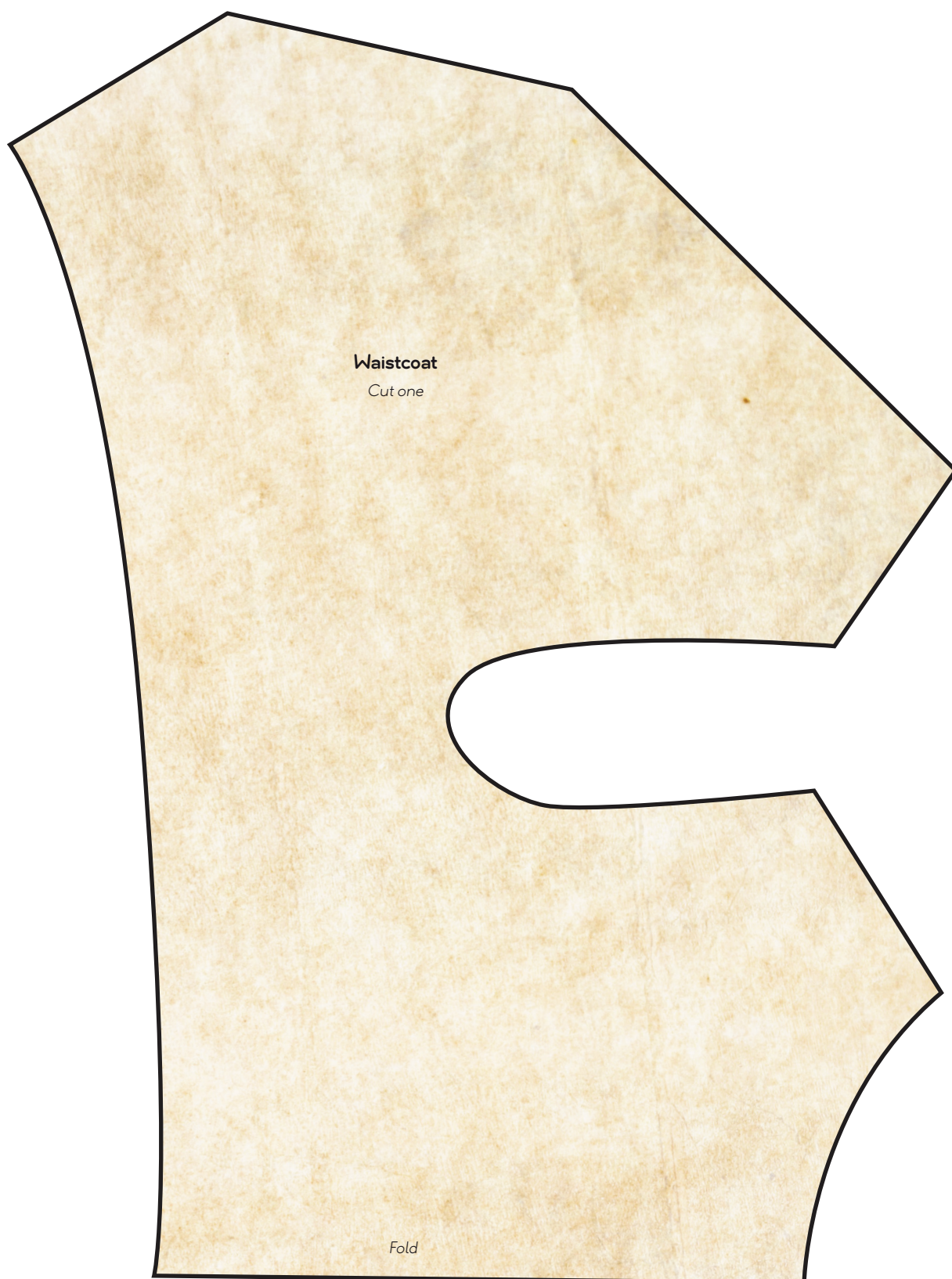


TEMPLATES 9

These templates are all provided at actual size, and include the seam allowance.

CLOTHING TEMPLATES

See pages 116–119 for these projects.



TEMPLATES 10

CLOTHING TEMPLATES

See pages 116–119 for these projects.

These templates are all provided at actual size, and include the seam allowance.

