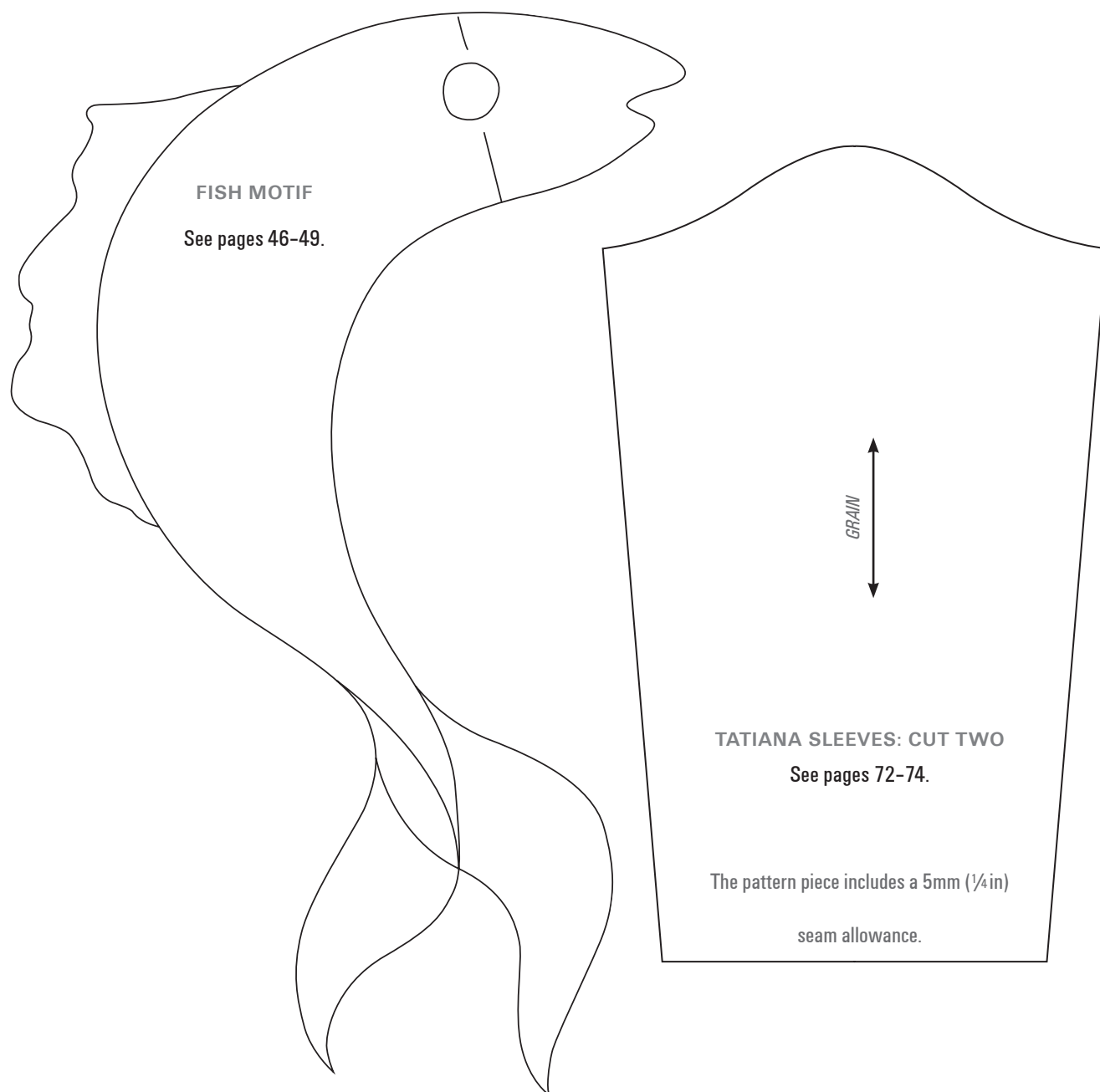


# Templates

All templates are actual size and do not require scaling unless stated otherwise

**TIP** Use this formula to enlarge or decrease any of the templates:

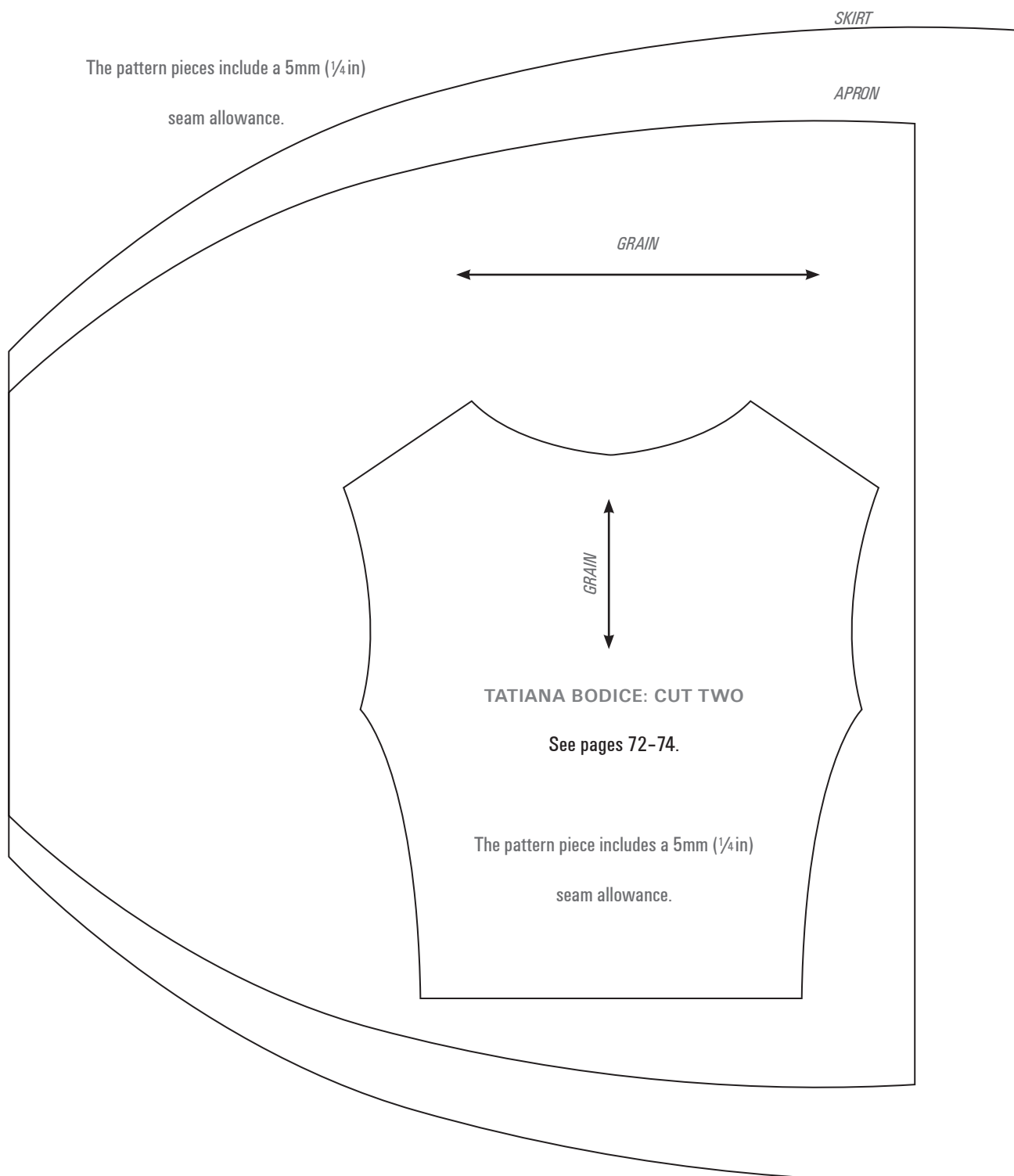
$$\text{DESIRED SIZE} \div \text{ORIGINAL SIZE} \times 100 = \text{PERCENTAGE TO INPUT}$$



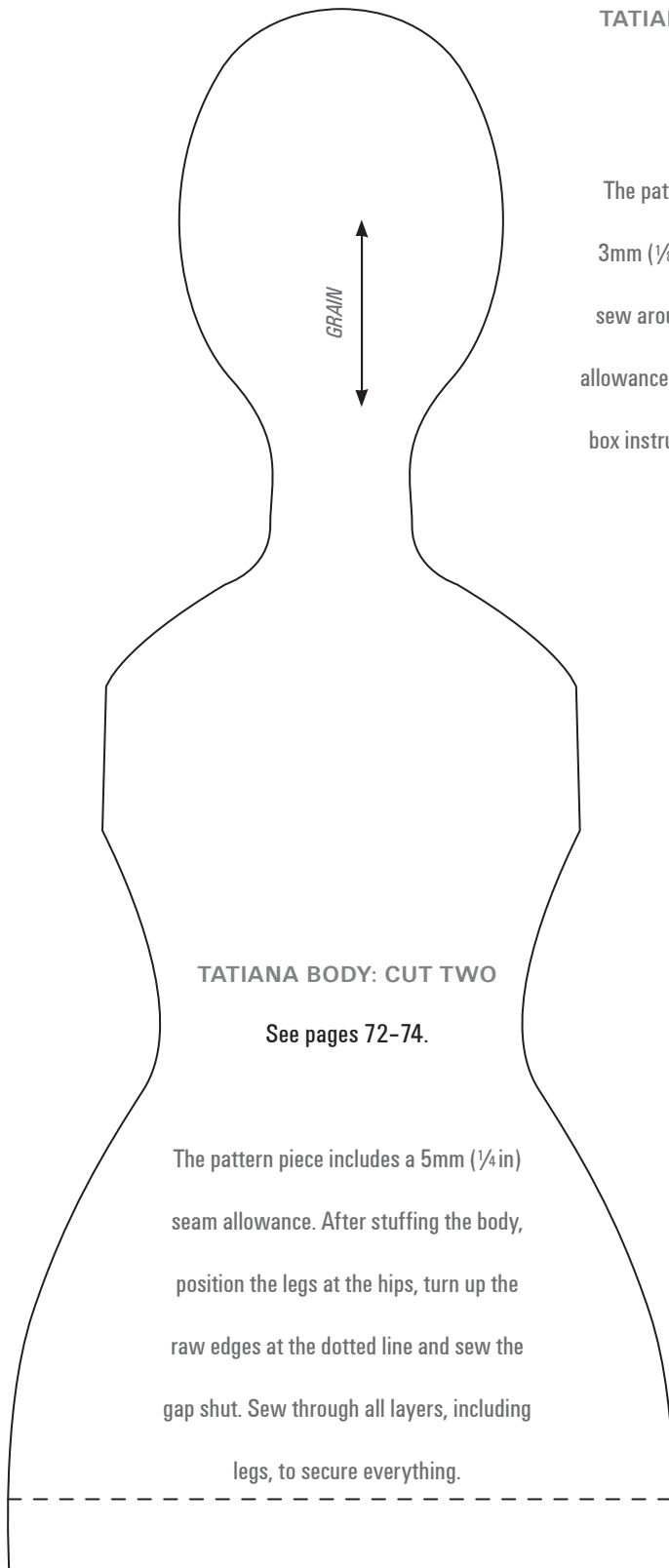
# Templates - 2

## TATIANA SKIRT AND APRON: CUT TWO SKIRTS AND ONE APRON

See pages 72-74.



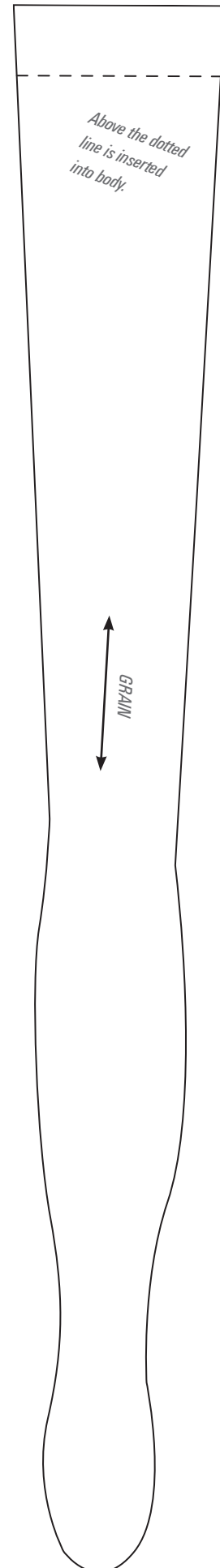
# Templates - 3



## TATIANA LEGS: CUT FOUR

See pages 72-74.

The pattern piece includes a scant 3mm ( $\frac{1}{8}$ in) seam allowance. Either sew around the foot using the seam allowance, or finish according to the tip box instructions on the project pages.

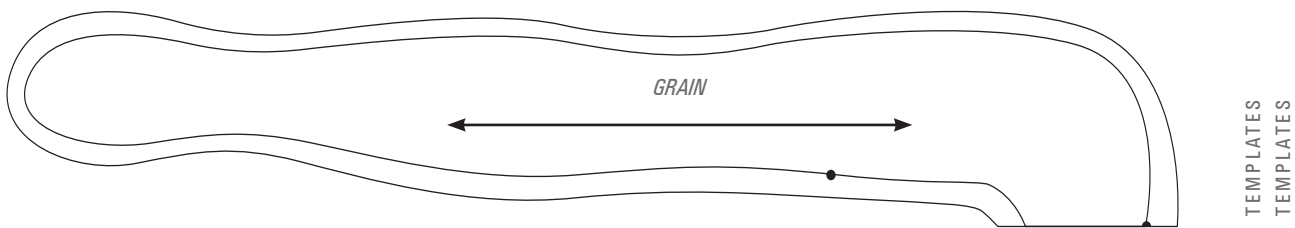


# Templates - 4

TATIANA ARMS: FOLD FABRIC IN HALF AND CUT TWO PAIRS

See pages 72-74.

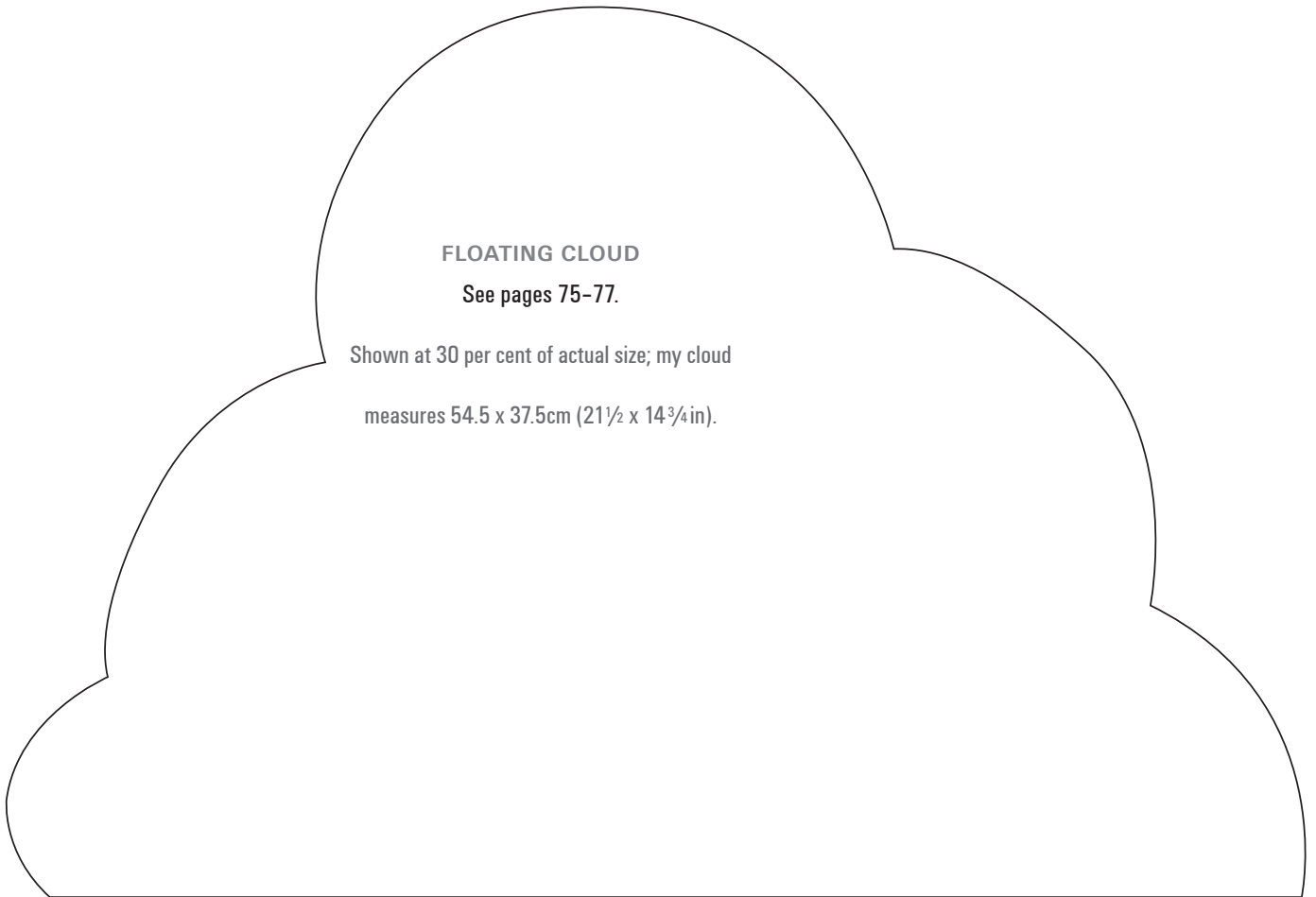
This pattern piece shows the seam allowance drawn on. Use a short stitch length and sew from • to • down around the hand and up to the shoulder. As turning through can be fiddly, it may help to taper the seam allowance in and out slightly at the narrowest points. Be mindful, however, of the stress stuffing will have on narrow or fragile seams.



## FLOATING CLOUD

See pages 75-77.

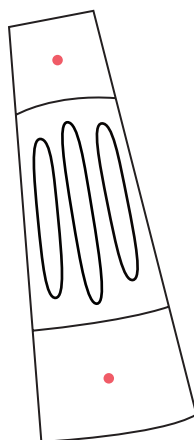
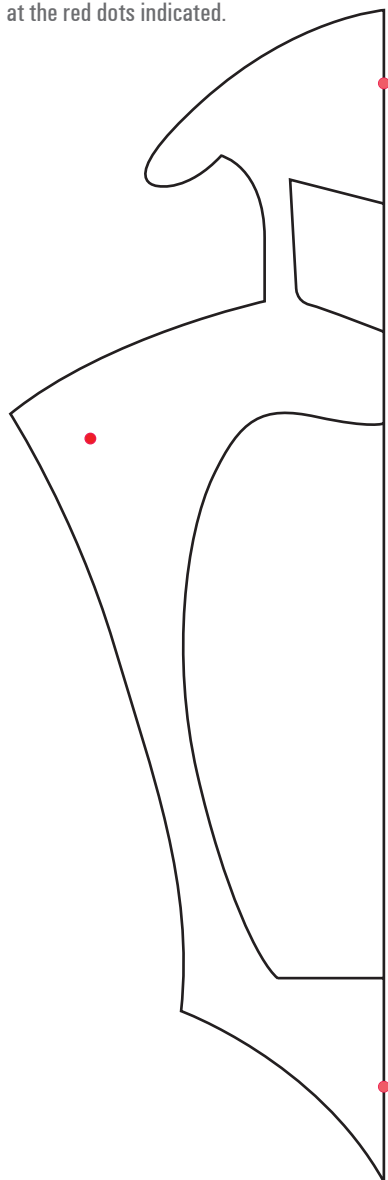
Shown at 30 per cent of actual size; my cloud  
measures 54.5 x 37.5cm (21½ x 14¾in).



# Templates - 5

**SHADOW PLAY AND RED  
QUEEN BODICE: CUT TWO  
COMPLETE PIECES**  
See pages 96-98 and 100-101.

Mirror to complete the shape; place brads  
at the red dots indicated.



**SHADOW PLAY AND RED QUEEN  
LOWER SLEEVES: CUT TWO**

See pages 96-98 and 100-101.

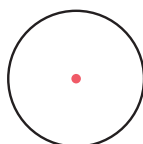
Place brads at the red dots indicated.



**SHADOW PLAY AND RED  
QUEEN HANDS: CUT TWO**

See pages 96-98 and 100-101.

Place brads at the red dots indicated.



**SHADOW PLAY AND RED  
QUEEN TAB: CUT ONE**

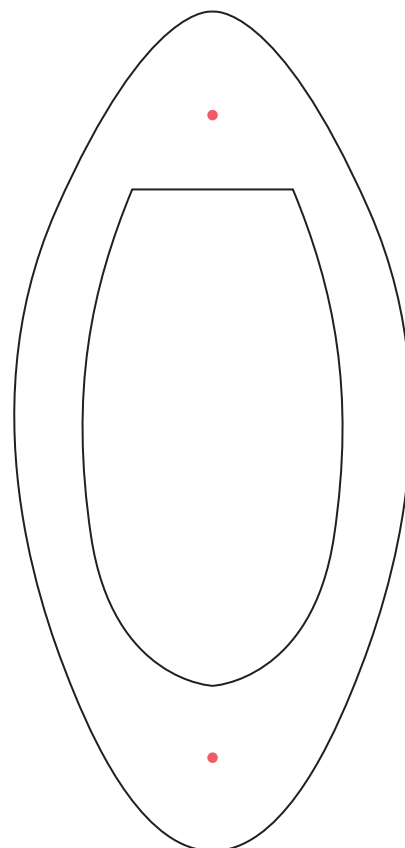
See pages 96-98 and 100-101.

Place on back of face where indicated with  
a dotted line.

**SHADOW PLAY AND RED QUEEN  
UPPER SLEEVES: CUT FOUR**

See pages 96-98 and 100-101.

Place brads at the red dots indicated.



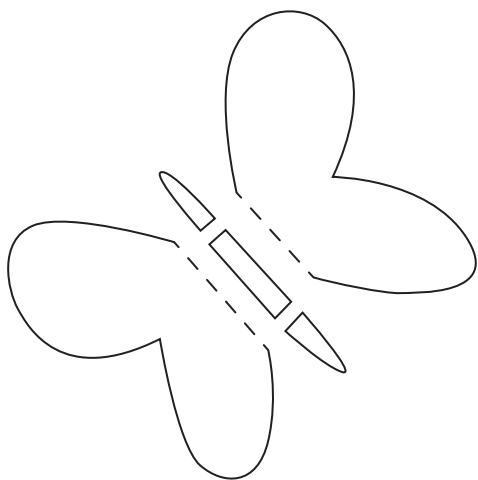
# Templates - 6



## MOTHS TO A FLAME: MAIN CARD PIECE

See page 92.

Shown at 75 per cent of actual size; my card  
measures 25.5 x 21 cm (10 x 8¼ in), plus tabs.



## MOTHS TO A FLAME: MOTH

See page 92.

Shown at actual size.

# Templates - 7

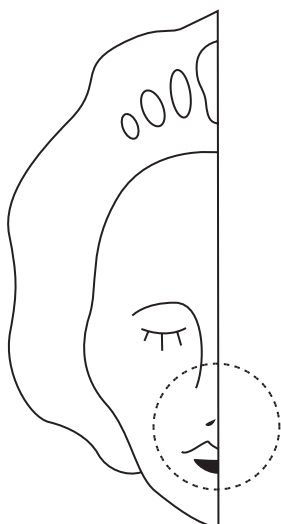
SHADOW PLAY AND RED  
QUEEN SKIRT: CUT TWO  
COMPLETE PIECES

See pages 96-98 and 100-101.

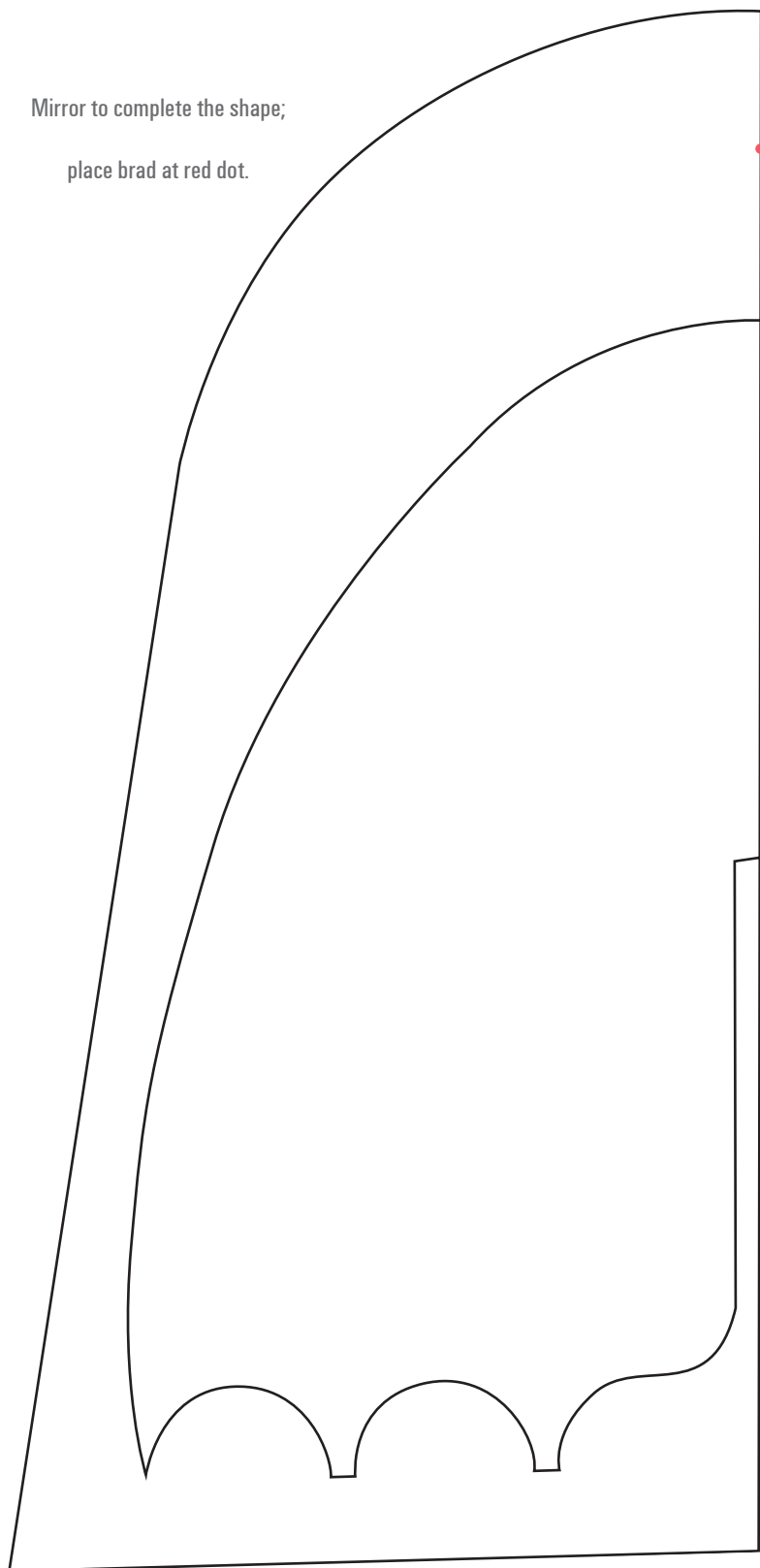
SHADOW PLAY AND  
RED QUEEN FACE: CUT  
ONE COMPLETE PIECE

See pages 96-98 and 100-101.

Mirror to complete the shape.



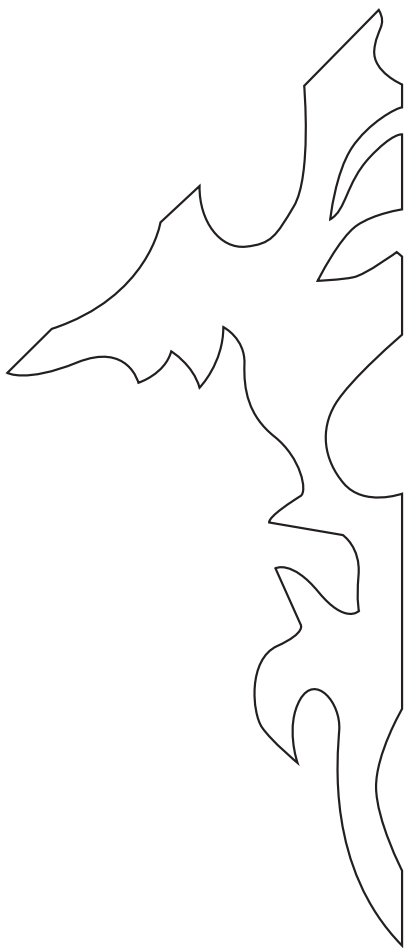
Mirror to complete the shape;  
place brad at red dot.



# Templates - 8

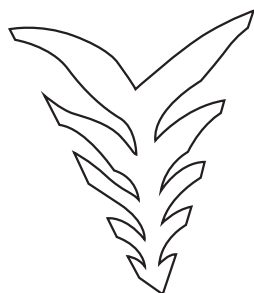
## RED QUEEN PAPER CUT-OUT FOR SKIRT

See pages 100-101.



## RED QUEEN PAPER CUT-OUT FOR BODICE

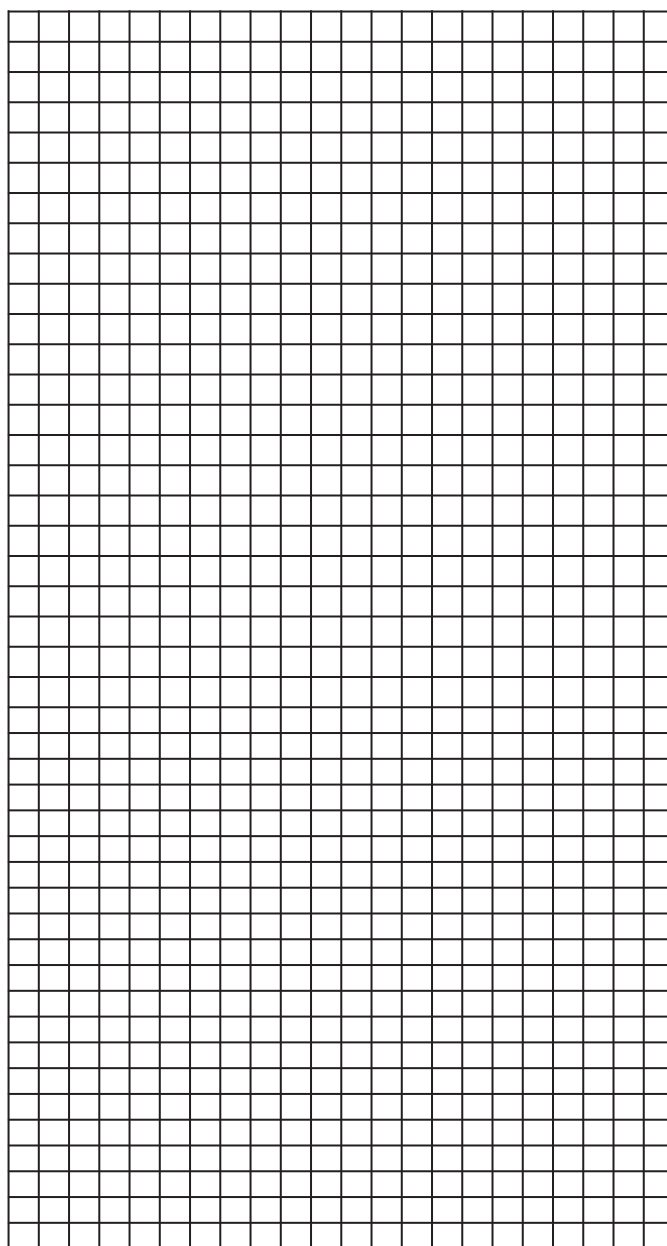
See pages 100-101.



## LACE GRID

See pages 16-18.

Use this grid for cloth, or linen, stitch.

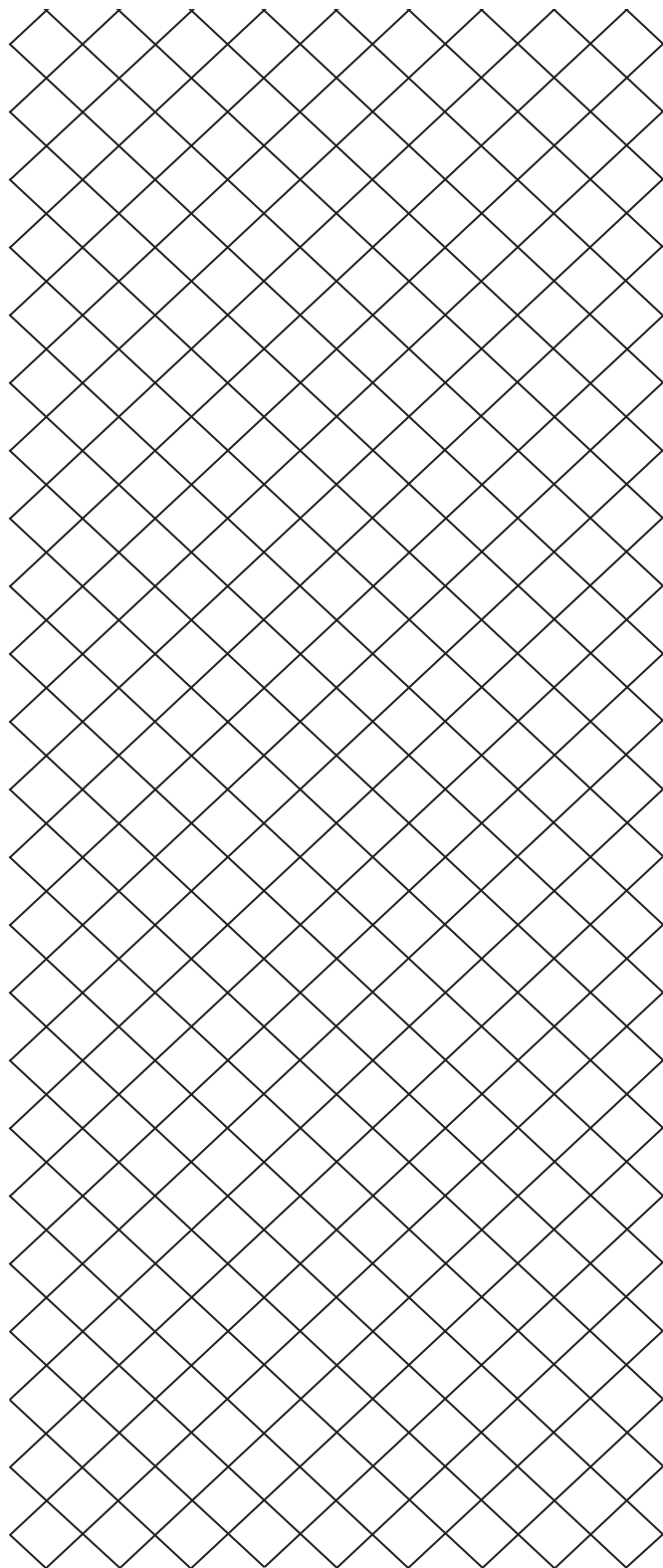


# Templates - 9

## LACE GRID

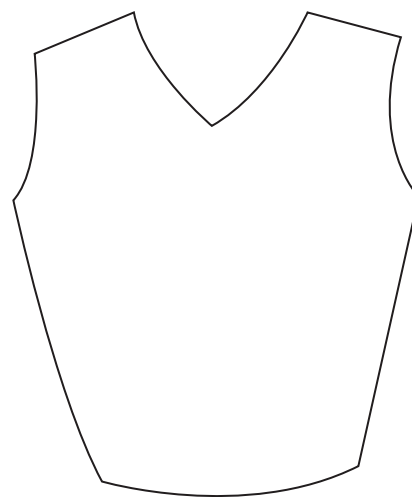
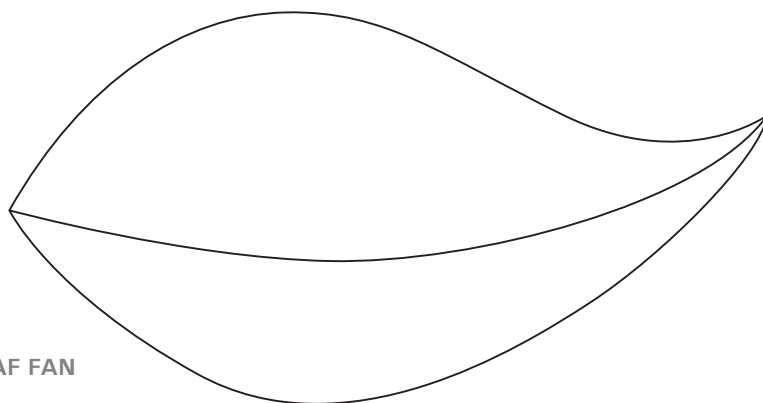
See pages 19-24.

Use for whole and double whole stitch lace.



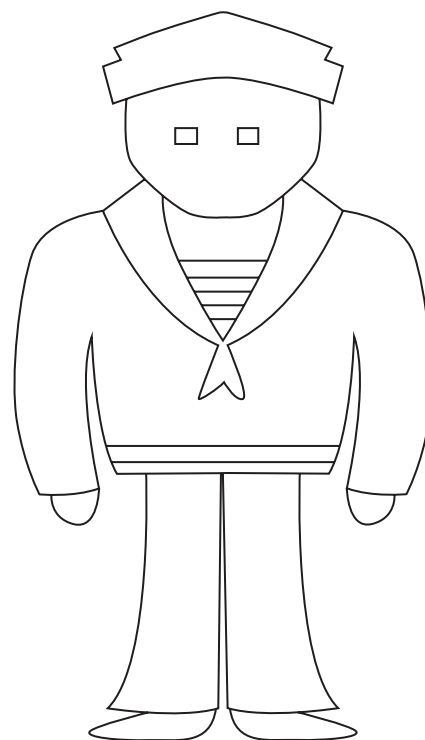
## SKELETON LEAF FAN

See pages 102-105.



## A QUICK GREETINGS CARD BODICE

See page 117.



## SAILOR BOY

See pages 110-111.