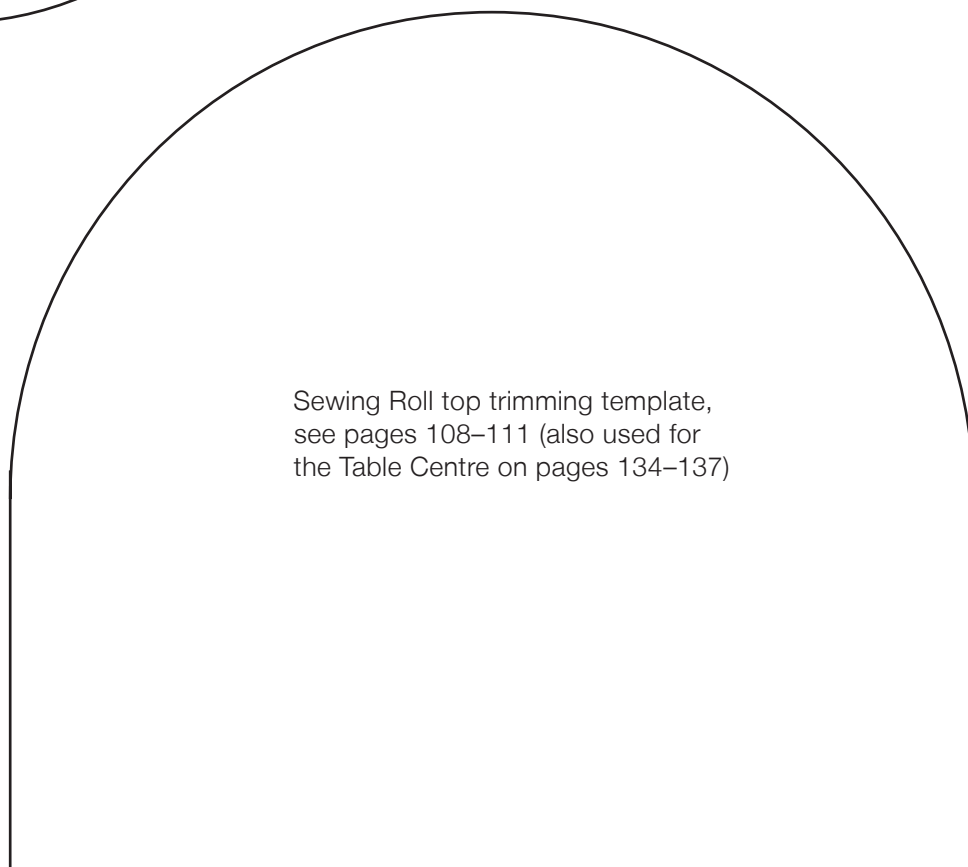
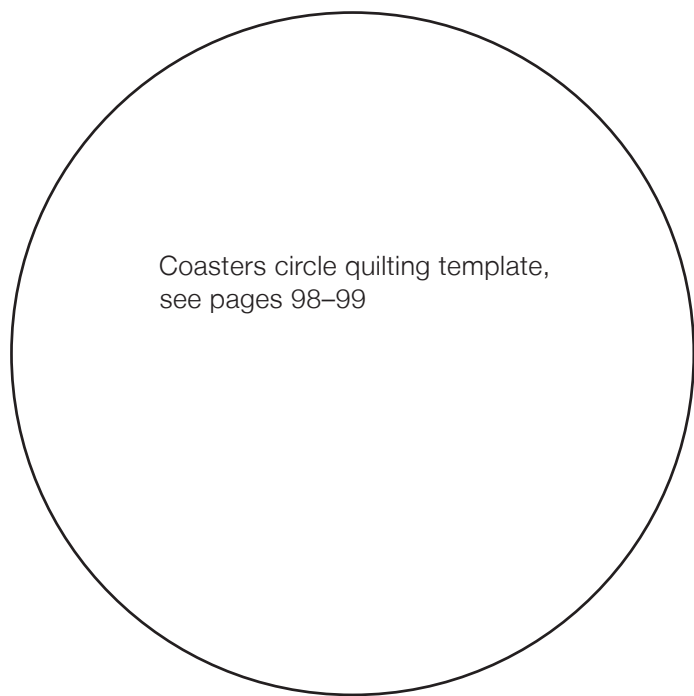


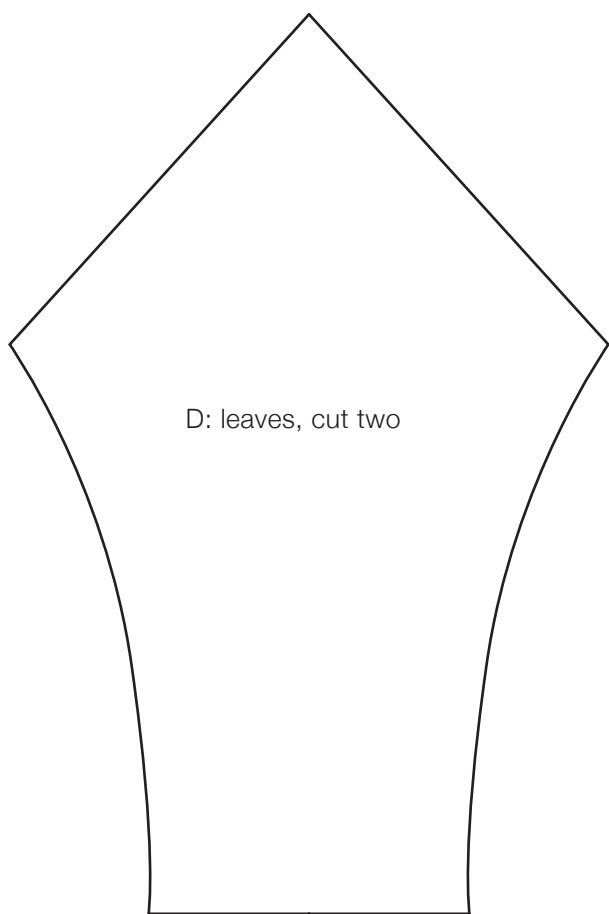
TEMPLATES

All templates are actual size and do not require scaling



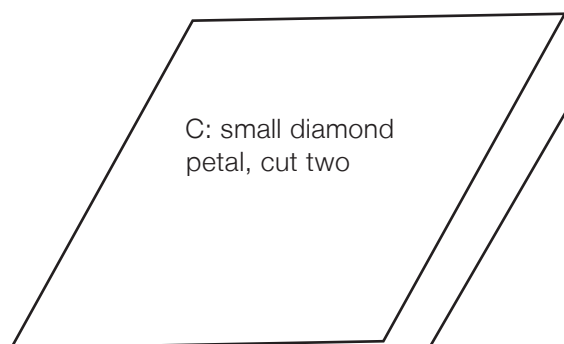
TEMPLATES

All templates are actual size and do not require scaling

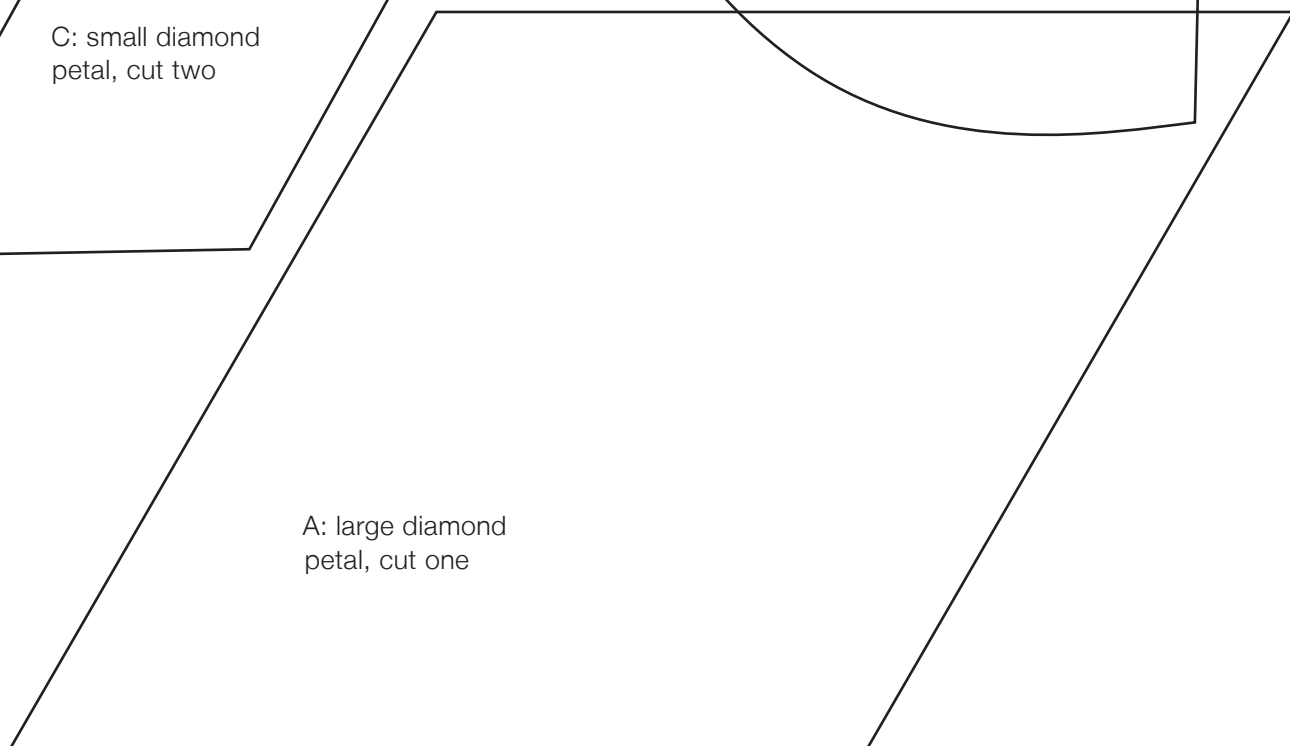


Ruby McKim Tulip
Pillow templates,
see pages 112–115

B/BR: curved petal, cut two,
with one reversed for BR

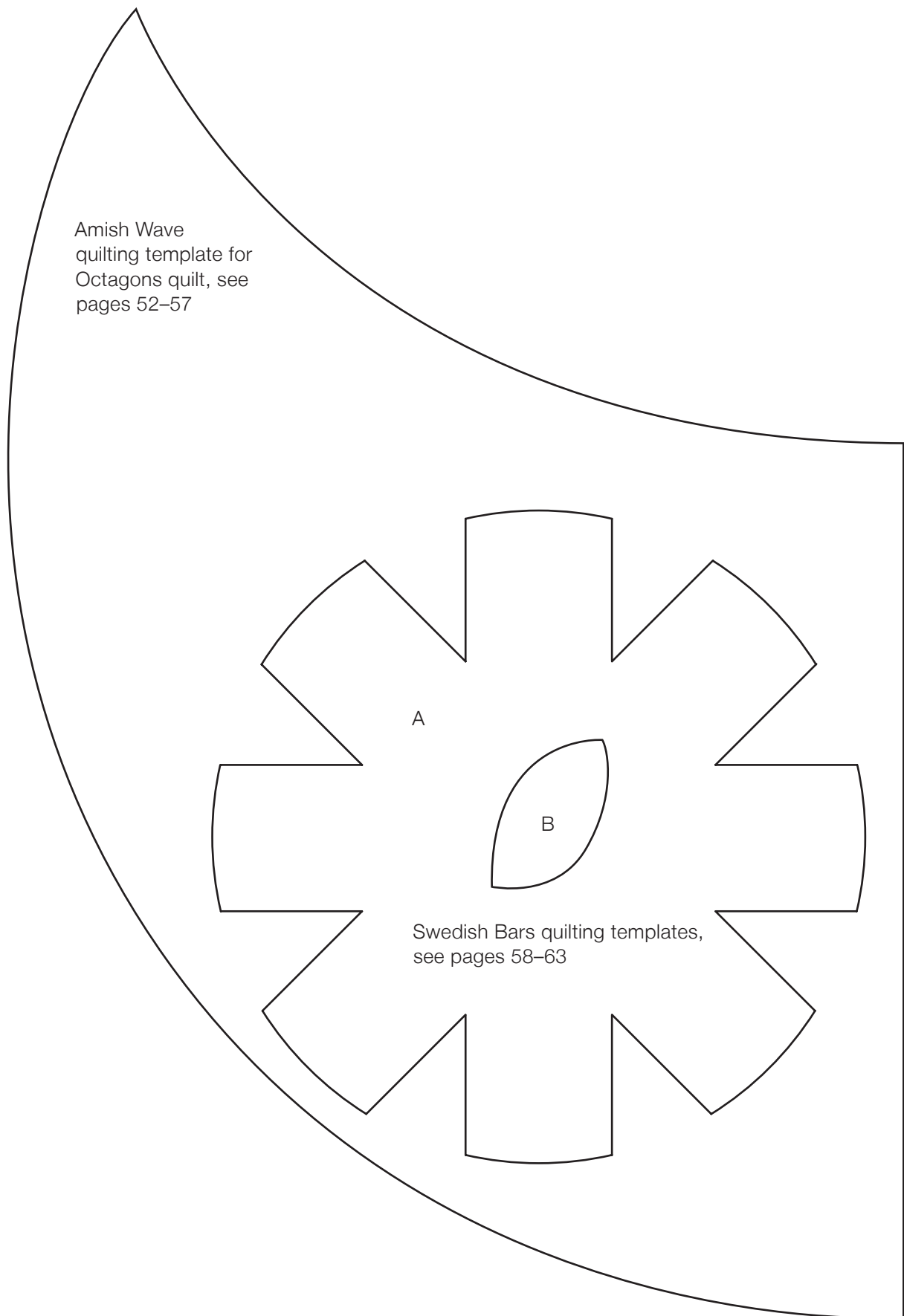


A: large diamond
petal, cut one



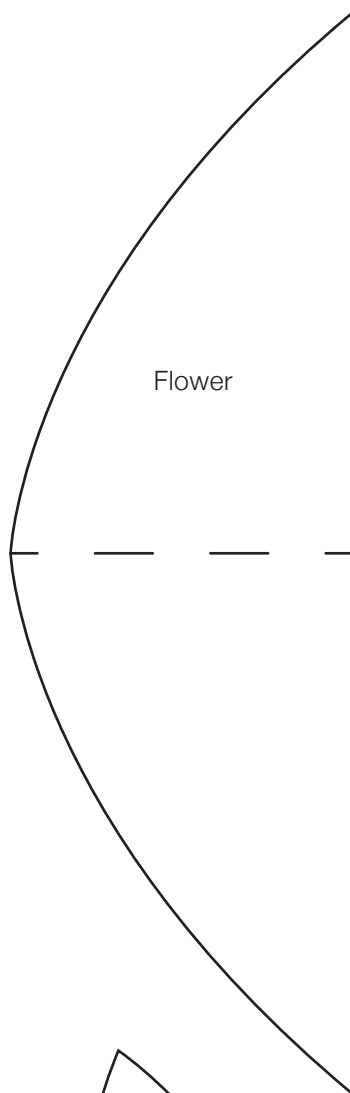
TEMPLATES

All templates are actual size and do not require scaling

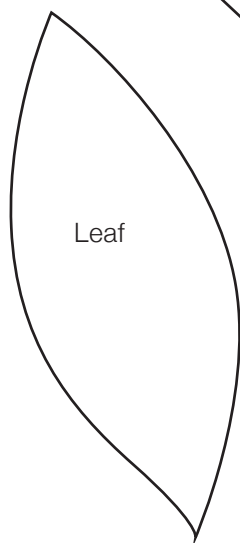


TEMPLATES

All templates are actual size and do not require scaling

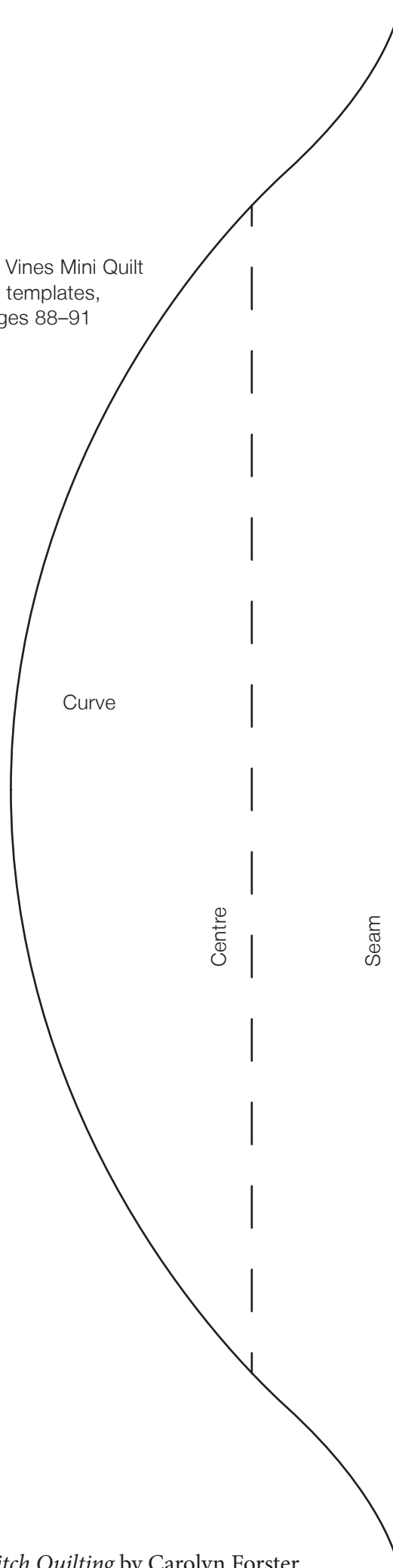


Flower



Leaf

Quilted Vines Mini Quilt
quilting templates,
see pages 88–91



Curve

Centre

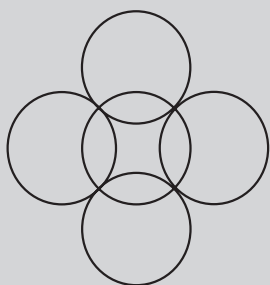
Seam

TEMPLATES

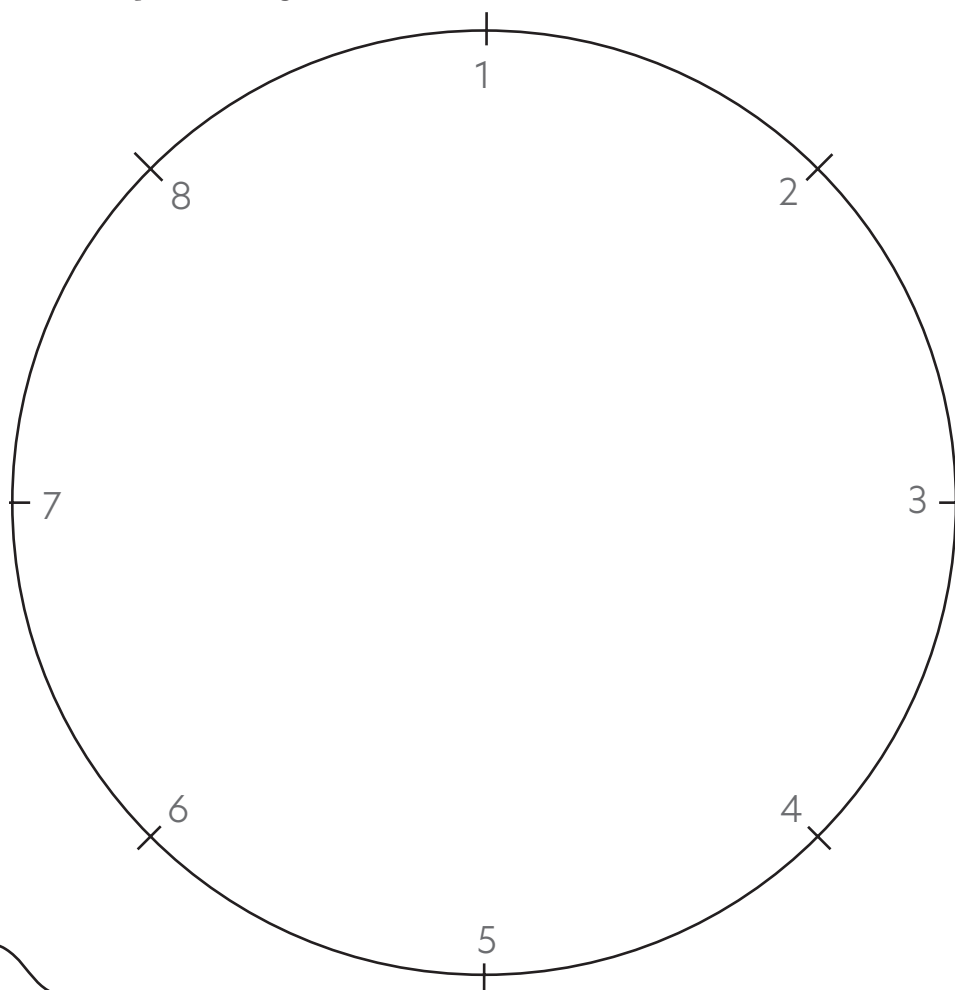
All templates are actual size and do not require scaling

Furoshiki Cloths quilting
template, see pages
100–103

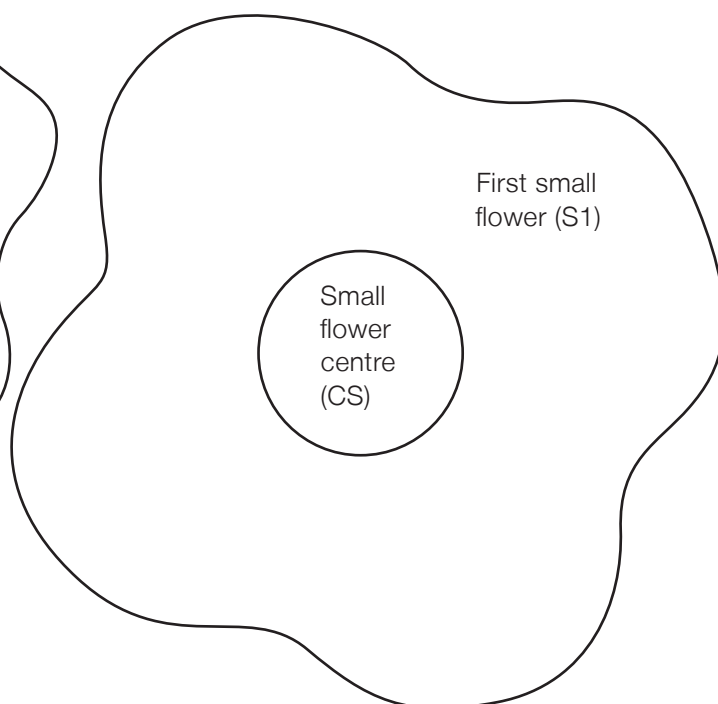
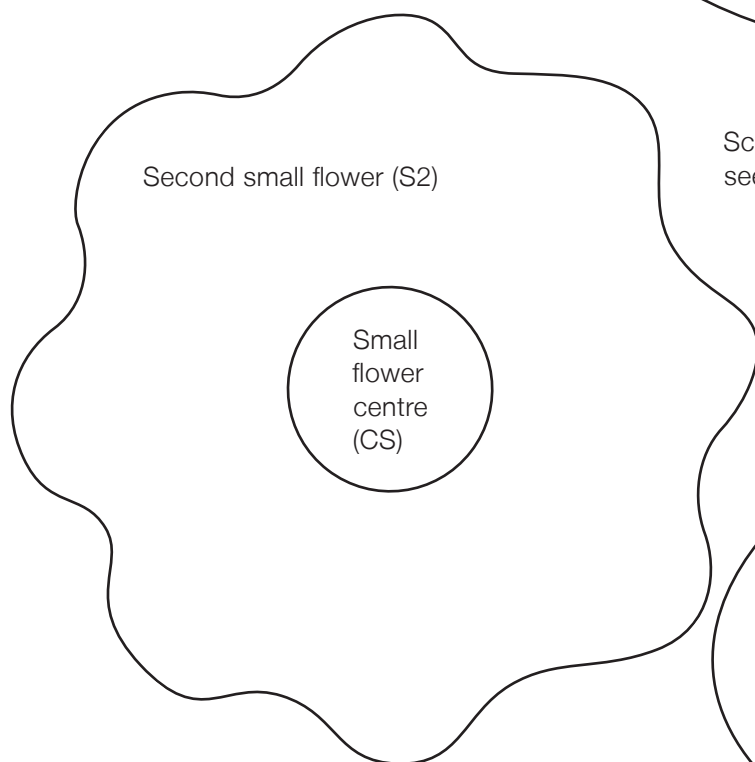
Creating the pattern



To achieve the overlapping
patterns, use the spokes to
help you line up your circles:
for the above pattern, use
2 and 4, 4 and 6, 6 and 8
and 8 and 2.



Scattered Flowers quilting templates,
see pages 82–87



TEMPLATES

All templates are actual size and do not require scaling

