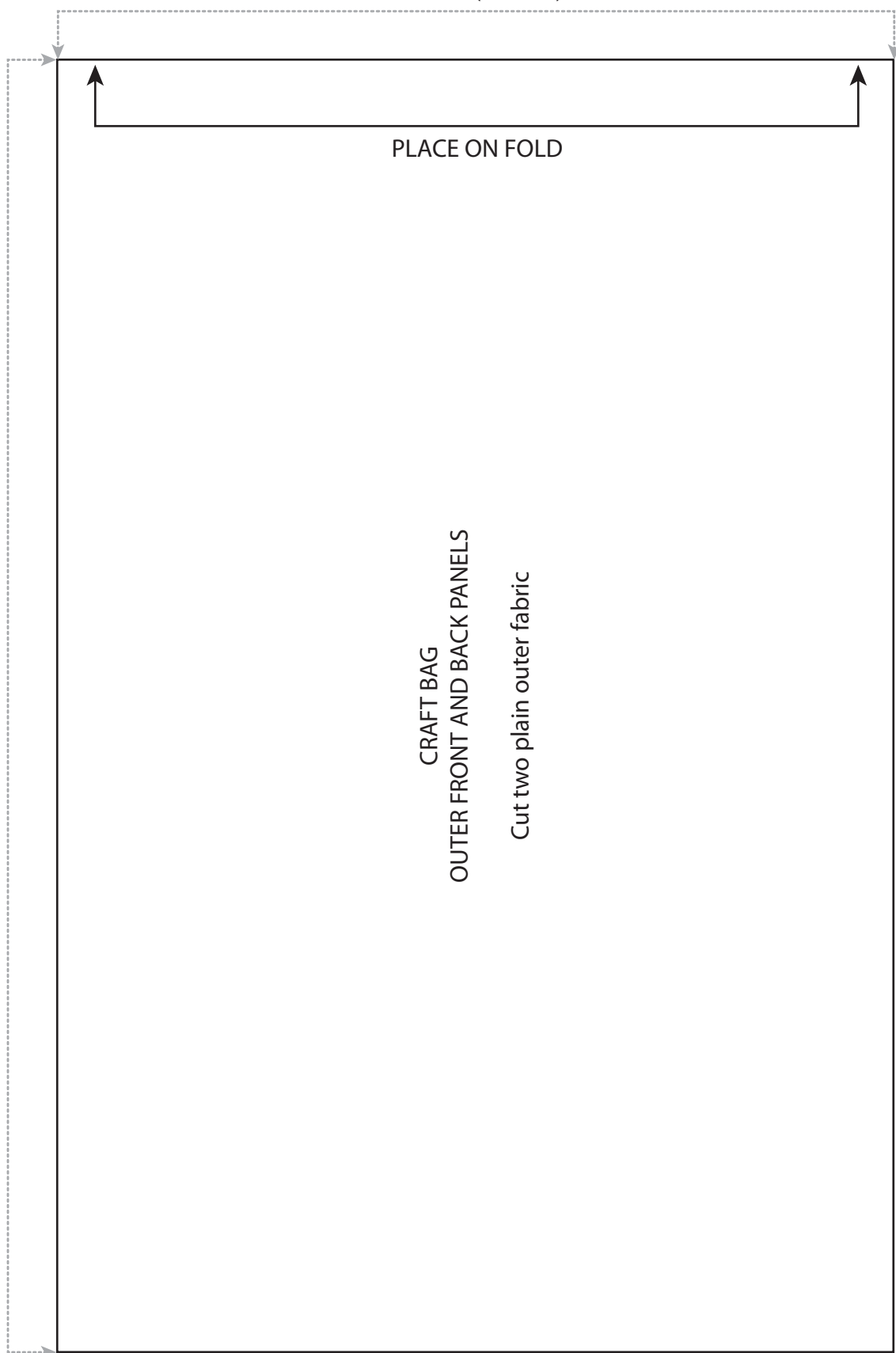


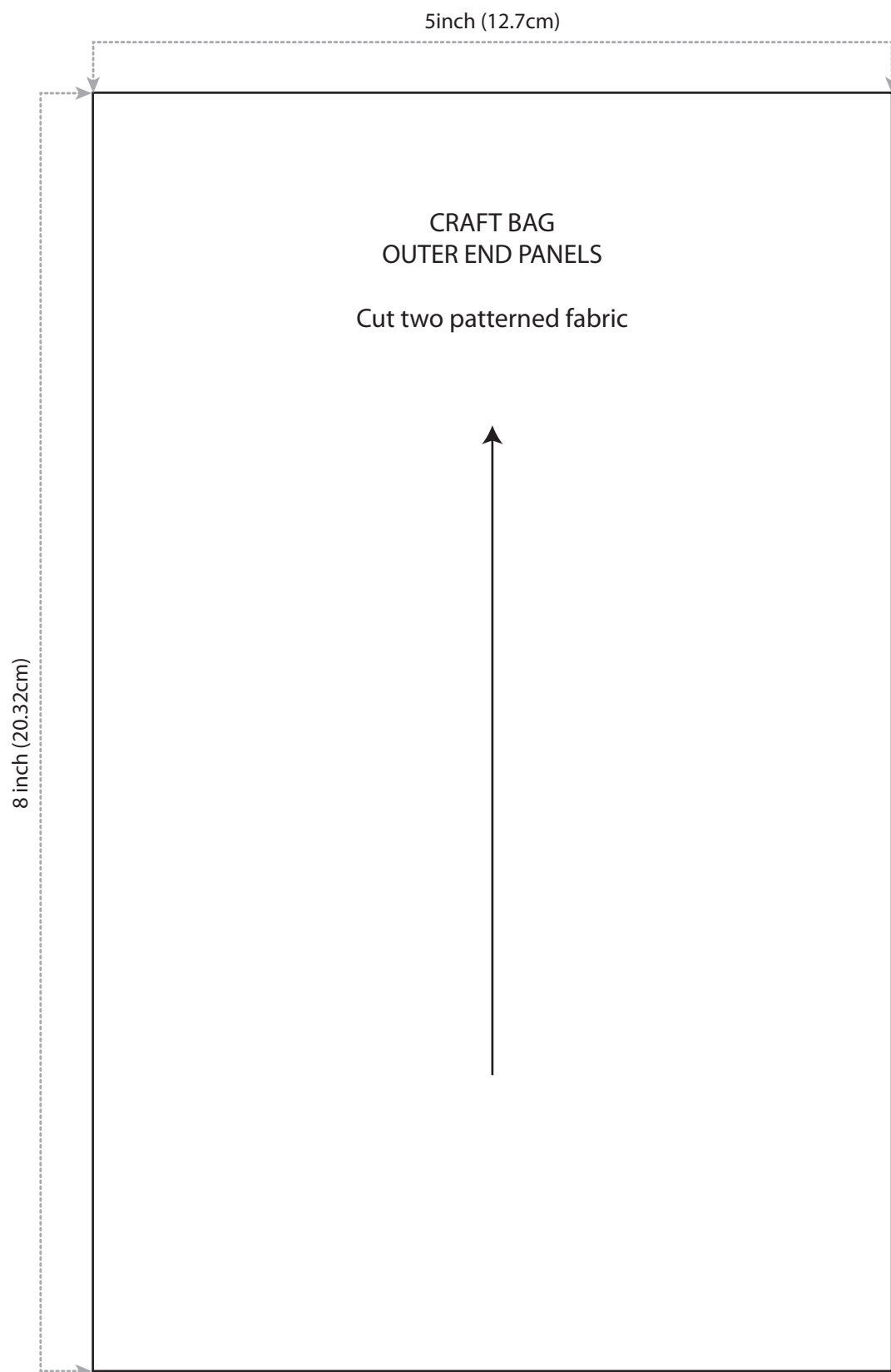
8½ inch (21.59cm)

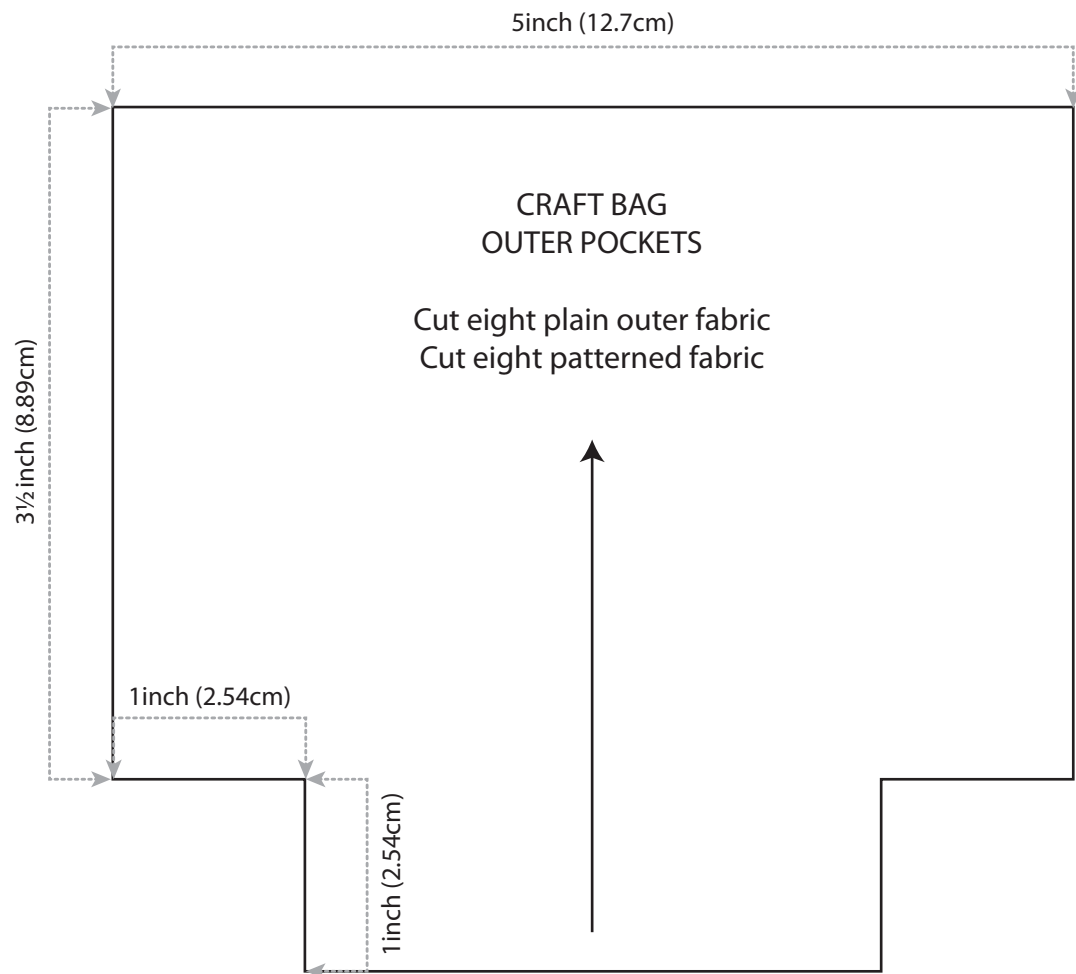
5½ inch (13.97cm)

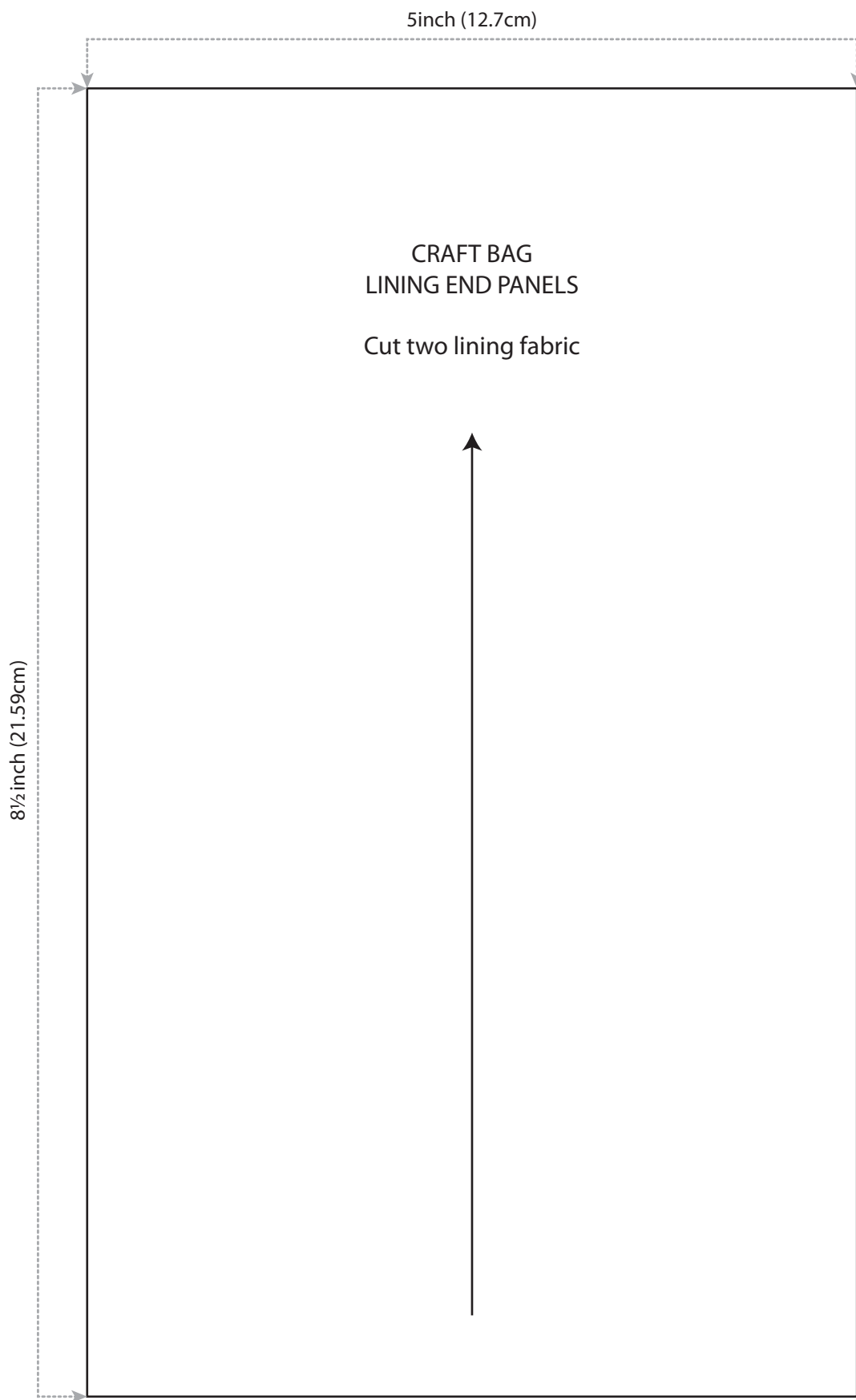


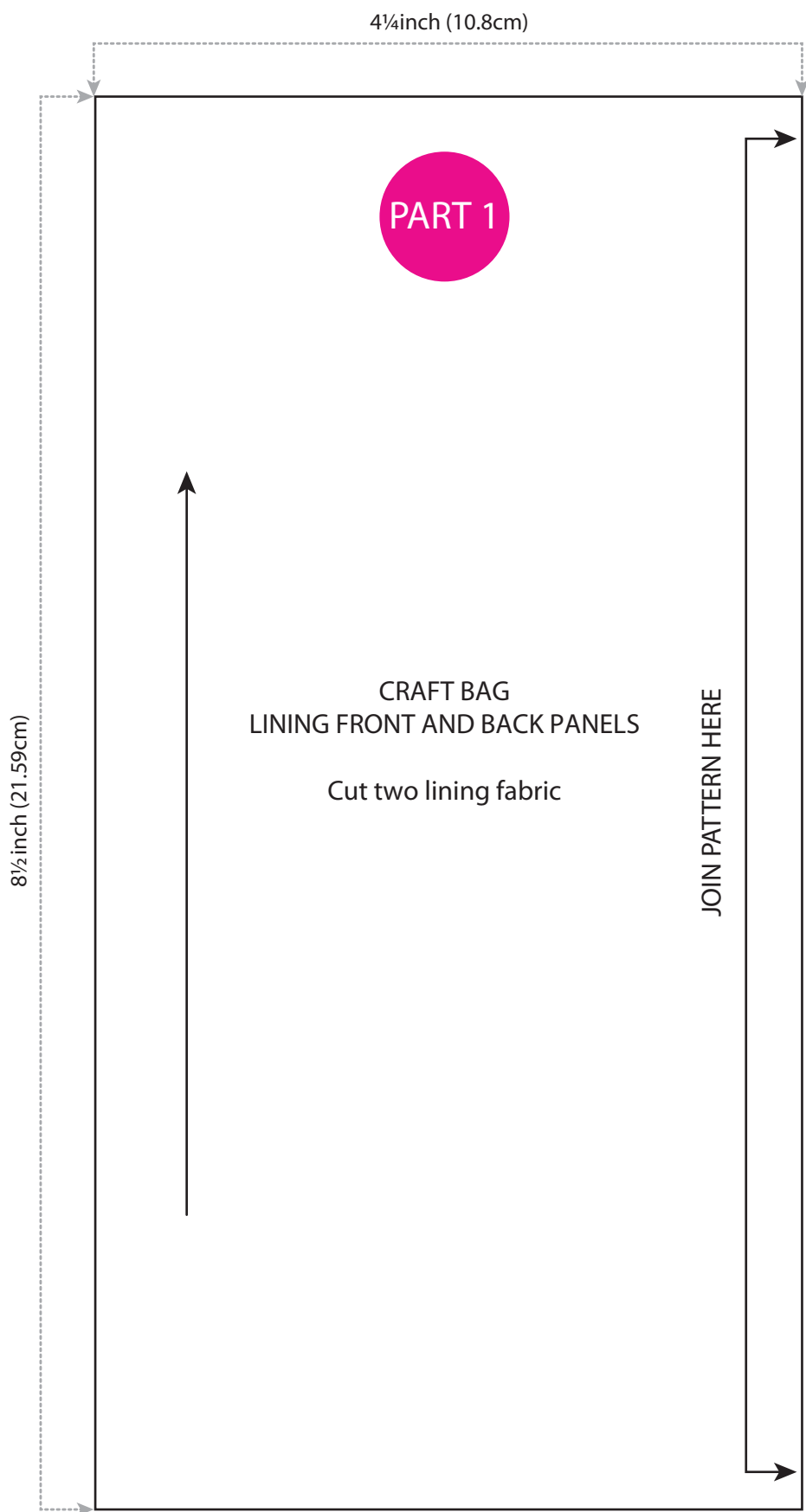
PLACE ON FOLD

CRAFT BAG
OUTER FRONT AND BACK PANELS
Cut two plain outer fabric









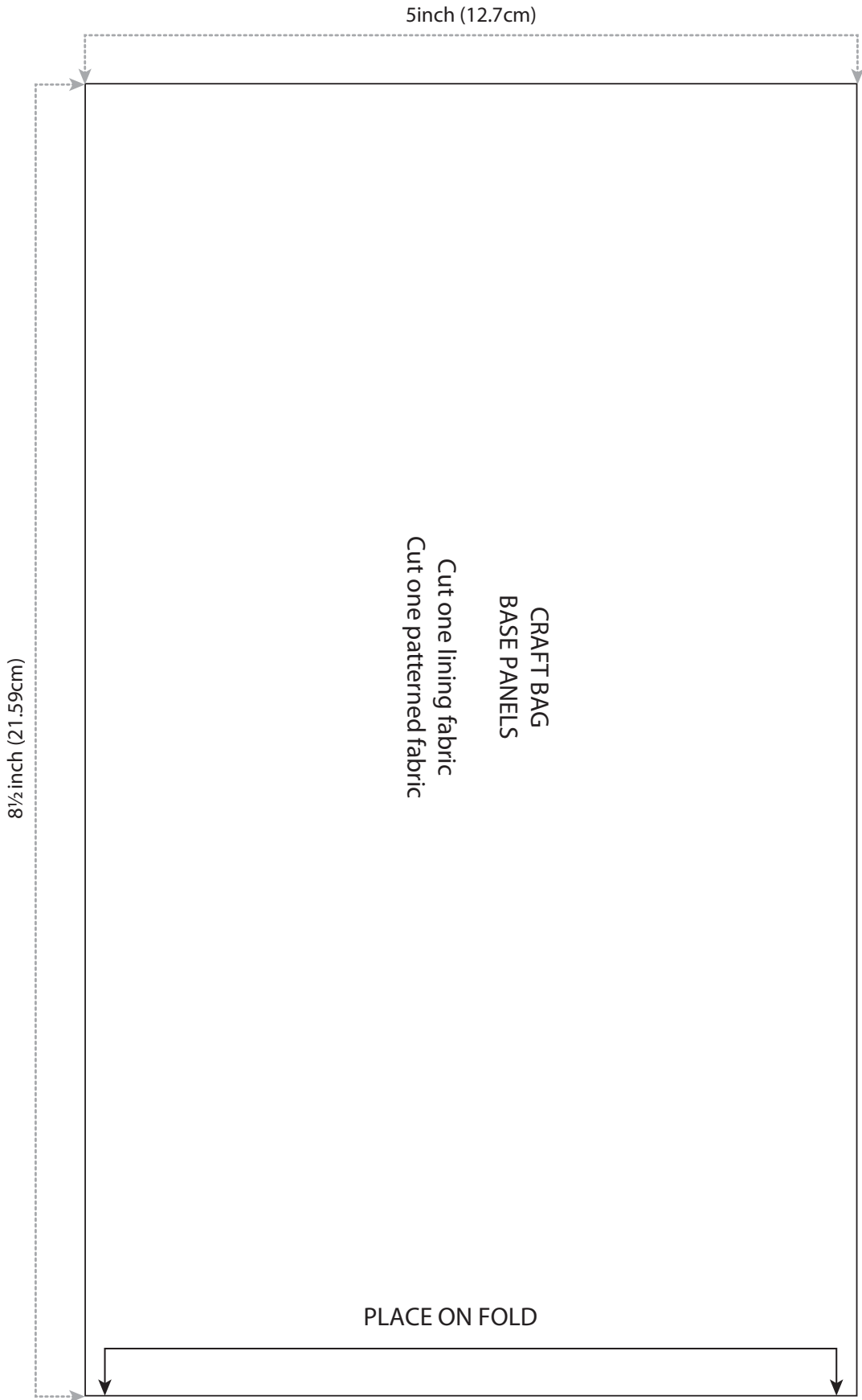
4¼inch (10.8cm)

PART 2

CRAFT BAG
LINING FRONT AND BACK PANELS

JOIN PATTERN HERE

PLACE ON FOLD



5 inch (12.7cm)

8 1/2 inch (21.59cm)

CRAFT BAG
BASE PANELS

Cut one lining fabric
Cut one patterned fabric

PLACE ON FOLD

