

CHARTS

Note: each size in the Charts begins and ends at a different point in the pattern.

- Yarn A (*Grouse 235, or variegated brown*)
- Yarn B (*Twilight 175, or slate blue*)
- Yarn C (*Nighthawk 1020, or green-blue*)
- Yarn D (*Granny Smith 1140, or moss green*)
- Yarn E (*Eggshell 768, or pale mint*)
- Yarn F (*Pebble 127, or grey-cream*)
- Size 1 ONLY
- Size 2 ONLY
- Size 3 ONLY
- Size 4 ONLY

Chart A: Chest pattern

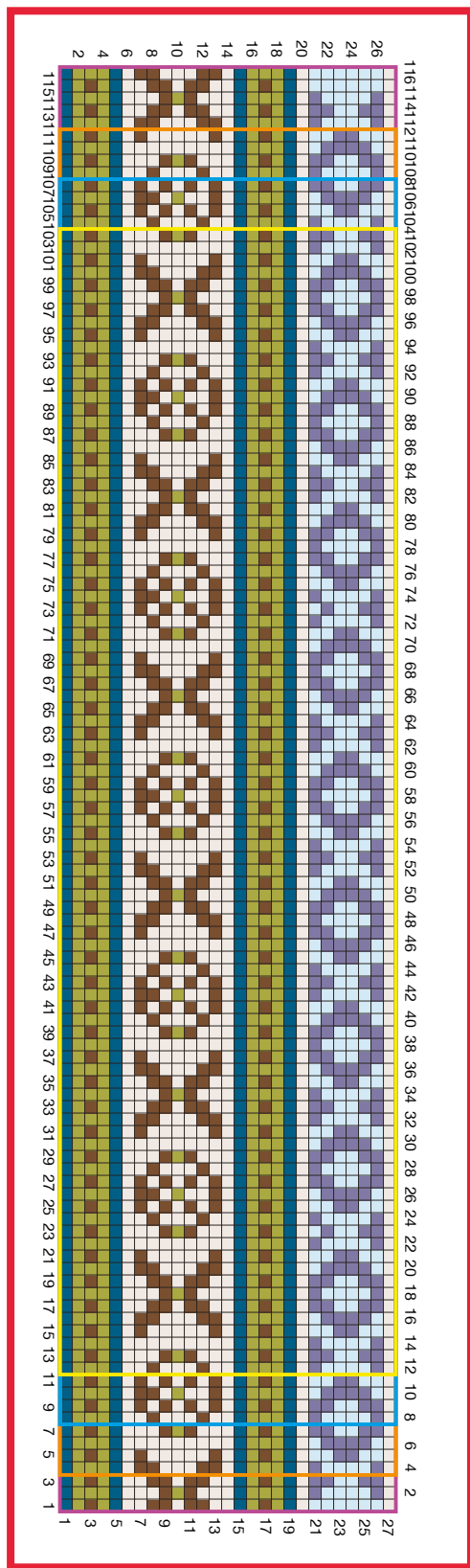
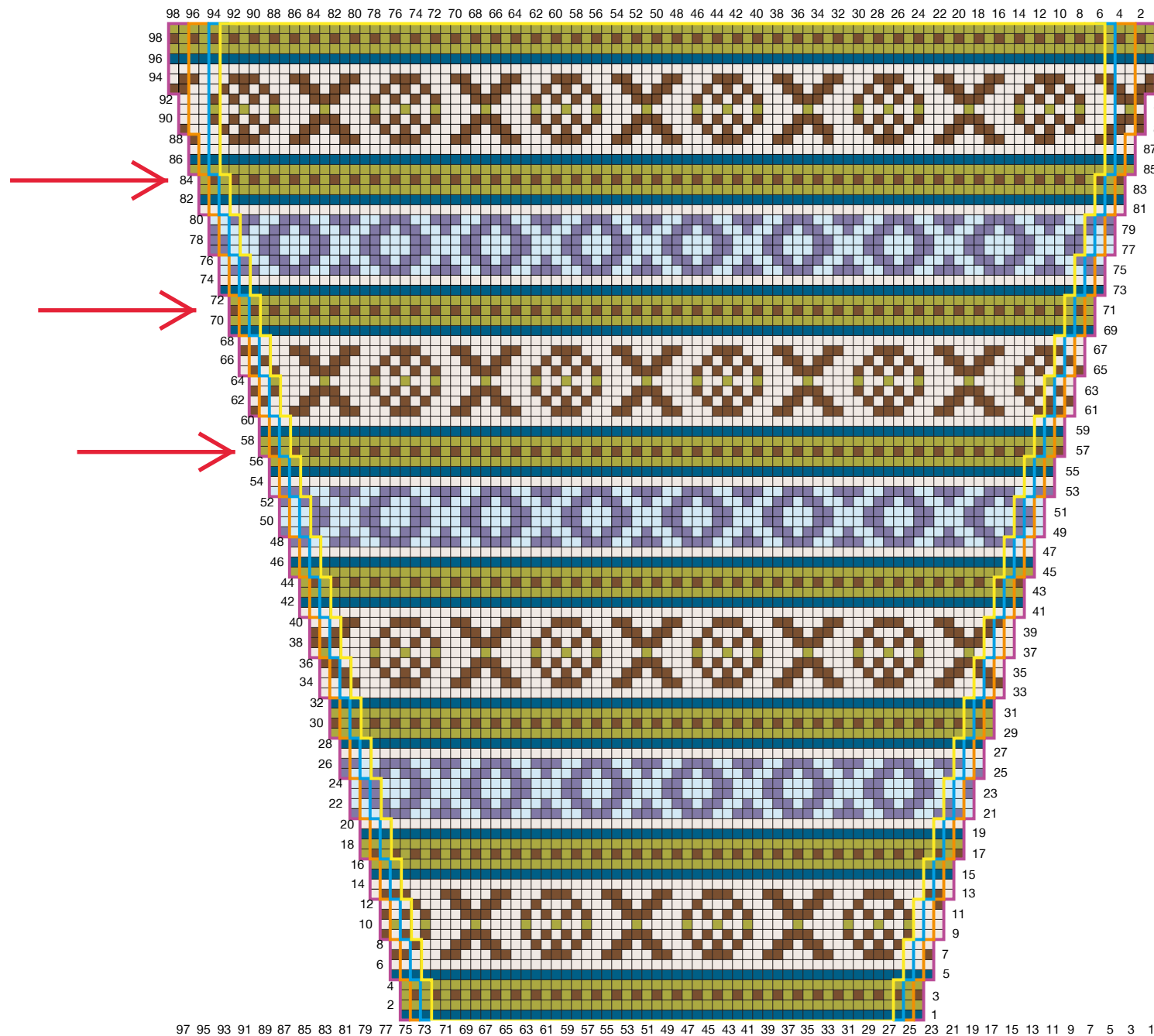


Chart B: Sleeve

Note: sleeve increases are not explicitly shown in the chart. Work increases in appropriate colour throughout, according to the pattern instructions, working M1 one stitch in from each edge. For example, if the second stitch of an increase row would be 'k1A', it should be worked as 'M1' with yarn A instead.



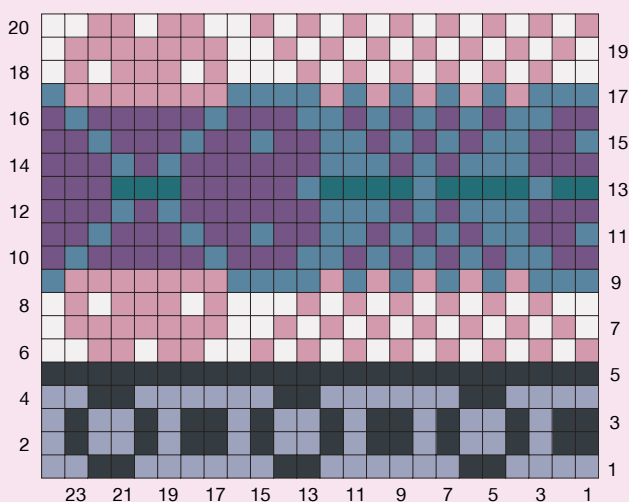
97 95 93 91 89 87 85 83 81 79 77 75 73 71 69 67 65 63 61 59 57 55 53 51 49 47 45 43 41 39 37 35 33 31 29 27 25 23 21 19 17 15 13 11 9 7 5 3 1

LOMOND

This is one of the more complex swatches as it combines many colours and more than one pattern. If this is a little challenging, the pattern could be simplified by reducing the number of colours used. This pattern would be great for an adult waistcoat, sweater or cardigan, but I would recommend waiting until you have fully mastered the technique of Fair Isle before approaching this particular pattern. You'll notice the smaller pattern design (rows 1–5) is repeated across 16 stitches. The overall pattern repeat is 24 stitches.

CHART

- Yarn A (Pebble Grey)
- Yarn B (Charcoal)
- Yarn C (Mist)
- Yarn D (Damask)
- Yarn E (Lomond)
- Yarn F (Zodiac)
- Yarn G (Petrol)



Row 1: k4A, k2b, * k6A, k2B, rep from * to last 2 sts, k2A.

Row 2: p1A, p1B * p2A, p1B, p1A, p2B, p1A, p1B, rep from * to last 6 sts, p2A, p1B, p1A, p2B.

Row 3: * k2B, k1A, k1B, k2A, k1B, k1A, rep from * to end.

Rows 4: p2A, * p2B, p6A, rep from * to last 6 sts, p2B, p4A.

Row 5: using yarn B, knit.

Row 6: p2C, p2D, p1C, p2D, p2C, (p1D, k1C) seven times, p1D.

Row 7: (k1C, k1D) seven times, k2C, k7D, k1C

Row 8: p1C, p1D, p1C, p3D, p1C, p1D, p3C, (p1D, p1C) six times, p1C.

Row 9: k3E, (k1D, k1E) five times, k3E, k7D, k1E.

Row 10: p1F, p1E, p5F, p1E, p3F, p2E, (p1F, p1E) four times, p1E, p2F.

Row 11: k1E, k2F, k2E, (k1F, k1E) three times, k1E, k2F, k1E, k2F, k1E, k3F, k1E, k2F.

Row 12: p3F, p1E, p1F, p1E, p6F, p3E, p1F, p1E, p1F, p3E, p3F.

Row 13: k2G, k1E, k4G, k1E, k4G, k1E, k5F, k3G, k3F.

Row 14: as row 12.

Row 15: as row 11.

Row 16: as row 10.

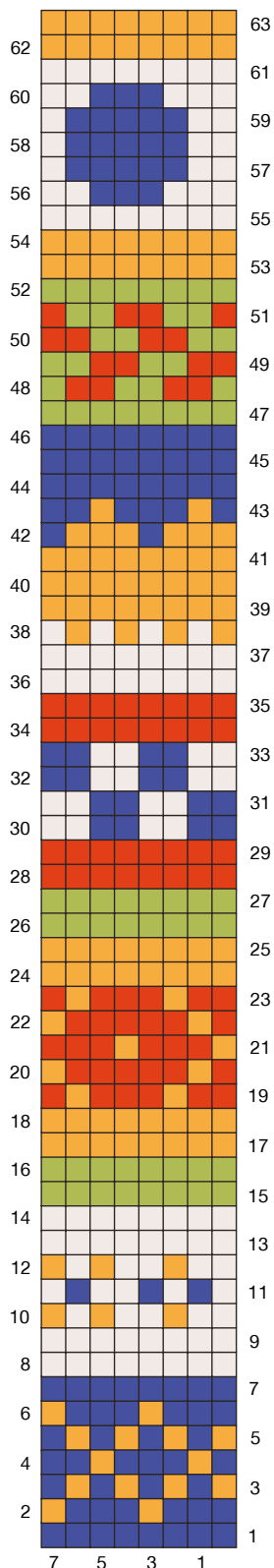
Row 17: as row 9.

Row 18: as row 8.

Row 19: as row 7.

Row 20: as row 6.

CHART



- Yarn A (Peridot 114, or green)
- Yarn B (Azurite 120, or blue)
- Yarn C (Citrine 118, or yellow)
- Yarn D (Quartz 122, or cream)
- Yarn E (Carnelian 130, or rust)

Row 1: using yarn B, knit.

Row 2: * k1C, k3B, rep from * to end.

Row 3: * k1C, k1B, rep from * to end.

Row 4: * k1B, k1C, k3B, k1C, k2B, rep from * to end.

Row 5: as row 3.

Row 6: as row 2.

Row 7: as row 1.

Rows 8 and 9: using yarn D, knit.

Row 10: * k2D, k1C, k2D, k1C, k1D, k1C, rep from * to end.

Row 11: * k1D, k1B, k1D, k1B, k2D, k1B, k1D, rep from * to end.

Row 12: as row 10.

Rows 13 and 14: using yarn D, knit.

Rows 15 and 16: using yarn A, knit.

Rows 17 and 18: using yarn C, knit.

Row 19: * k2E, k1C, k3E, k1C, k1E, rep from * to end.

Row 20: * k1E, k1C, k5E, k1C, rep from * to end.

Row 21: * k1C, k3E, k1C, k3E, rep from * to end.

Row 22: as row 20.

Row 23: as row 19.

Rows 24 and 25: using yarn C, knit.

Rows 26 and 27: using yarn A, knit.

Rows 28 and 29: using yarn E, knit.

Rows 30 and 31: * k2B, k2D, rep from * to end.

Rows 32 and 33: * k2D, k2B, rep from * to end.

Rows 34 and 35: using yarn E, knit.

Rows 36 and 37: using yarn D, knit.

Row 38: * k1C, k1D, rep from * to end.

Rows 39–41: using yarn C, knit.

Row 42: * k3C, k1B, rep from * to end.

Row 43: * k1B, k1C, k3B, k1C, k2B, rep from * to end.

Rows 44–46: using yarn B, knit.

Row 47: using yarn A, knit.

Row 48: * k1A, k2E, k2A, k2E, k1A, rep from * to end.

Row 49: * k2E, k2A, rep from * to end.

Row 50: * k2A, k2E, rep from * to end.

Row 51: * k1E, k2A, k2E, k2A, k1E, rep from * to end.

Row 52: using yarn A, knit.

Rows 53 and 54: using yarn C, knit.

Row 55: using yarn D, knit.

Row 56: * k3D, k3B, k2D, rep from * to end.

Rows 57–59: * k2D, k5B, k1D, rep from * to end.

Row 60: as row 56.

Row 61: using yarn D, knit.

Rows 62 and 63: using yarn C, knit.



Pattern notes

During the colourwork motif, strand the yarn not in use loosely across the WS of the work. Avoid long strands by twisting unused yarn colours with those in use every few stitches as you work (see page 29).

The collar is shaped with short rows using the 'wrap and turn' method (W&T). See 'Knitting Abbreviations' on page 37 for instructions on how to do this.

Use straight knitting needles for the cardigan; circular needles and DPNs for the hat.

Size chart

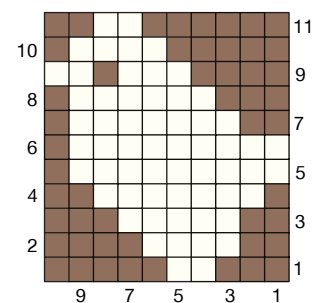
		SIZE 1: 0-3 MONTHS	SIZE 2: 3-6 MONTHS	SIZE 3: 6-9 MONTHS	SIZE 4: 9-12 MONTHS	SIZE 5: 1-2 YEARS	SIZE 6: 2-3 YEARS
ACTUAL CHEST	CM	49	53	56	59	60	65
	IN	19¼	20¾	22	23¼	23½	25½
ACTUAL LENGTH TO SHOULDER	CM	21	24	26	28	32	34
	IN	8¼	9½	10¼	11	12½	13½
ACTUAL SLEEVE LENGTH	CM	13	15	17	19	22	24
	IN	5½	6	6¾	7½	8¾	9½
UPPER ARM CIRCUM.	CM	15	17	19	20.5	21	22
	IN	6	6¾	7½	8	8¼	8¾

CHARTS

○ Yarn B (Parchment, or cream)

● Yarn C (Speckled Grey, or variegated brown-grey)

Chart A



Row 1 (RS): k3C, k2B, k5C.

Row 2 (WS): p4C, p4B, p2C.

Row 3: k2C, k5B, k3C.

Row 4: p2C, p7B, p1C.

Row 5: k9B, k1C.

Row 6: p1C, p9B.

Row 7: k2C, k7B, k1C.

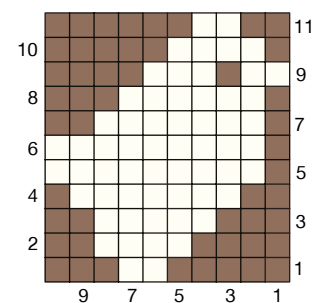
Row 8: p1C, p6B, p3C.

Row 9: k4C, k3B, k1C, k2B.

Row 10: p1C, p4B, p5C.

Row 11: k6C, k2B, k2C.

Chart B



Row 1 (RS): k5C, k2B, k3C.

Row 2 (WS): p2C, p4B, p4C.

Row 3: k3C, k5B, k2C.

Row 4: p1C, p7B, p2C.

Row 5: k1C, k9B.

Row 6: p9B, p1C.

Row 7: k1C, k7B, k2C.

Row 8: p3C, p6B, p1C.

Row 9: k2B, k1C, k3B, k4C.

Row 10: p5C, p4B, p1C.

Row 11: k2C, k2B, k6C.

PATTERN

CARDIGAN

Back

Using yarn A and 3.75mm (UK 9; US 5) needles, cast on 51(55:59:63:67:71) sts.

Rows 1-6: knit.

Change to 4.5mm (UK 7; US 7) needles.

Work 2 rows in St st, starting with a RS knit row.

Join in yarns B and C.

Row 9: * k1B, k1C, rep from * to last st, k1B.

Row 10: * p1C, p1B, rep from * to last st, p1C.

Work 2 rows in St st using yarn A, starting with a RS knit row.

Work 2 rows in St st using yarn C, starting with a RS knit row.

Row 15: k3(3:5:3:3:3)C, * work row 1 of Chart A across next 10 sts, k2(3:3:2:3:3)C, rep from * 2(2:2:3:3:3) more times, work row 1 of Chart A across next 10 sts, k2(3:5:2:2:6)C.

Row 16: p2(3:5:2:2:6)C, * work row 2 of Chart A across next 10 sts, p2(3:3:2:3:3)C, rep from * 2(2:2:3:3:3) more times, work row 2 of Chart A across next 10 sts, p3(3:5:3:3:3)C.

Cont to work as set until row 11 of Chart A is completed.

Work 3 rows in St st using yarn C, starting with a WS purl row.

Work 2 rows in St st using yarn A, starting with a **RS knit row.**

Row 31: * k1B, k1C, rep from * to last st, k1B.

Row 32: * p1C, p1B, rep from * to last st, p1C.

Work 2 rows in St st using yarn A, starting with a RS knit row.

Work 2 rows in St st using yarn C, starting with a RS knit row.

(Note: read the following instructions carefully, as you will be working two sets of instructions at the same time.)

SIZE 1 ONLY

Cut off yarns A and B. Cont in St st using yarn C only throughout the remainder of Back.

SIZES 2, 3, 4, 5 AND 6 ONLY

Row 37: k-(10:12:10:10:10)C, * work row 1 of Chart B across next 10 sts, k-(3:3:2:3:3)C, rep from * -(2:2:3:3:3) more times, k-(6:8:5:5:9)C.

Row 38: p-(6:8:5:5:9)C, * p-(3:3:2:3:3), work row 2 of Chart B across next 10 sts, rep from * -(2:2:3:3:3) more times, p-(10:12:10:10:10)C.

Cont to work as set until row 11 of **Chart B** is completed.

Work 3 rows in St st using yarn C, starting with a WS purl row.

Work 2 rows in St st using yarn A, starting with a RS knit row.

Next row: * k1B, k1C, rep from * to last st, k1B.

Next row: * p1C, p1B, rep from * to last st, p1C.

Work 2 rows in St st using yarn A, starting with a RS knit row.

Fasten off yarns A and B. Cont in St st using yarn C only throughout remainder of Back.

ALL SIZES AGAIN

SHAPE ARMHOLES

AT THE SAME TIME when Back measures 12(14:15:16:18:21)cm / 4¾(5½:6:6¼:7:8¼)in from cast-on edge, ending with a WS row, shape armholes as follows:

Cast off 4 sts at beg of next 2 rows (43(47:51:55:59:63) sts).

Cont in patt as set until Back measures 21(24:26:28:32:34)cm / 8¼(9½:10¼:11:12½:13½)in from cast-on edge ending with a WS row.

SHAPE SHOULDERS

Cast off 10(11:13:14:16:17) sts at beg of next 2 rows.

Cast off rem 23(25:25:27:27:29) sts.



Left Front

Using yarn A and 3.75mm (UK 9; US 5) needles, cast on 28(30:32:34:36:38) sts.

Rows 1–6: knit.

Change to 4.5mm (UK 7; US 7) needles.

Row 7 (RS): knit.

Row 8 (WS): k5, purl to end.

This sets the 5-st garter stitch border for the Front buttonhole band that is continued in yarn A throughout.

Join in yarns B and C.

Row 9: * k1B, k1C, rep from * to last 6 sts, k1B, k5A.

Row 10: k5A, * p1C, p1B, rep from * to last st, p1C.

Row 11: using yarn A, knit.

Row 12: k5A, pA to end.

Row 13: kC to last 5 sts, k5A.

Row 14: k5A, pC to end.

Row 15: k1(2:2:3:4:5)C, * work row 1 of Chart A, k1(1:2:3:3:3)C, rep from * once, k0(1:1:0:1:2)C, k5A.

Row 16: k5A, p0(1:1:0:1:2)C, * p1(1:2:3:3:3)C, work row 2 of Chart A, rep from * once, p1(2:2:3:4:5)C.

Cont to work as set until row 11 of Chart A is complete.

Work 3 rows in St st using yarn C, maintaining garter stitch buttonhole band in yarn A and starting with a WS purl row.

Work 2 rows in St st using yarn A, maintaining garter stitch buttonhole band.

Row 31: * k1B, k1C, rep from * to last 6 sts, k1B, k5A.

Row 32: k5A, * p1C, p1B, rep from * to last st, p1C.

Work 2 rows in St st using yarn A, maintaining garter stitch buttonhole band.

Work 2 rows in St st using yarn C, maintaining garter stitch buttonhole band in yarn A.

(**Note:** read the following instructions carefully as you may be working two sets of instructions at the same time.)

SIZE 1 ONLY

Cut off yarn B. Cont in St st throughout rem of Front, using yarn C and maintaining the garter stitch buttonhole band in yarn A.

SIZES 2, 3, 4, 5 AND 6 ONLY

Row 37: k-(8:9:9:10:11)C, work row 1 of Chart B across next 10 sts, k-(7:8:10:11:12)C, k5A.

Row 38: k5A, p-(7:8:10:11:12)C, work row 2 of Chart B across next 10 sts, p-(8:9:9:10:11)C.

Cont to work as set until row 11 of Chart B is completed.

Work 3 rows in St st using yarn C, starting with a WS purl row and maintaining garter stitch buttonhole band in yarn A.

Work 2 rows in St st using yarn A, maintaining garter stitch buttonhole band.

Next row: * k1B, k1C, rep from * to last 6 sts, k1B, k5A.

Next row: k5A, * p1C, p1B, rep from * to last st, p1C.

Work 2 rows in St st using yarn A, maintaining garter stitch buttonhole band.

Cut off yarn B. Cont in St st throughout rem of Front, using yarn C and maintaining garter stitch buttonhole band in yarn A.

ALL SIZES AGAIN

SHAPE ARMHOLES

AT THE SAME TIME when Front measures 12(14:15:16:18:21)cm / 4¾(5½:6:6¼:7:8¼)in from cast-on edge, ending with a WS row, shape armholes as follows at the same time:

Cast off 4 sts at beg of next row (24(26:28:30:32:34) sts).

Cont straight in pattern as set until Front measures 17.5(20.5:21.5:23.5:26.5:28.5)cm / 6⅞(8:8½:9¼:10½:11¼)in from cast-on edge, ending with a WS row.

SHAPE NECK

Next row: knit to last 7(7:8:8:9:9) sts, turn and leave rem sts on a stitch holder for the collar. Dec 1 st at neck edge on every row until 10(11:13:14:16:17) sts rem.

Cont straight in pattern as set until Left Front measures same as Back to shoulder, ending with working yarn at armhole edge.

Cast off sts.

Mark position for 4(5:5:5:5:6) buttons, the first placed 1cm (½in) below neck edge, and the last placed in the middle of the garter stitch border. The rem 2(3:3:3:3:4) buttons are spaced evenly between them.

Right Front

Using yarn A and 3.75mm (UK 9; US 5) needles, cast on 28(30:32:34:36:38) sts.

Rows 1–4: knit.

Row 5 (RS) (buttonhole): k1, k2tog, YO, knit to end. This begins the spacing of the buttonholes.

Row 6: knit.

Change to 4.5mm (UK 7; US 7) needles.

Row 7: knit.

Row 8: purl to last 5 sts, k5A.

The 5-st buttonhole band is continued in garter stitch throughout.

Cont in pattern as set for Left Front, reversing all shaping and placing the buttonholes to match button markers.



Sleeves

Using yarn A and 3.75mm (UK 9; US 5) needles, cast on 29(31:33:35:35:37) sts.

Rows 1–6: knit.

Change to 4.5mm (UK 7; US 7) needles.

Cont in St st as outlined below, **AT THE SAME TIME** Inc 1 st at each end of next and every foll sixth row, until there are 37(41:45:49:51:53) sts:

Work 2 rows in St st, starting with a RS knit row.

Join in yarn B and C.

Row 3: k1B, * k1C, k1B, rep from * to end.

Row 4: p1C, * p1B, p1C, rep from * to end.

Work 4 rows in St st using yarn A.

Work 4 rows in St st using yarn B.

Work 4 rows in St st using yarn C.

Work 2 rows in St st using yarn A.

Rows 17 and 18: as rows 3 and 4.

Work 4 rows in St st using yarn A.

Cont in yarn C until sleeve measures 13(15:17:19:22:24)cm / 5¼(6:6¾:7½:8¾:9½)in from cast-on edge, ending with a WS row.

Mark each end of last row with contrasting coloured scraps of yarn.

Work 6 rows in St st.

Cast off.

Collar

(Note: when picking up sts along Back Neck edge, you will need to pick up 6 more sts than there are cast-off sts. Space these extra picked-up sts evenly along the Back Neck cast off.)

Using 3.75mm (UK 9; US 5) needles and yarn A, and with RS facing, k7(7:8:8:9) sts from Right Front neck, pick up and k13(13:15:15:17:17) sts up Right Front neck, pick up and k29(31:31:33:33:35) from Back neck edge, pick up and k13(13:15:15:17:17) sts down Left Front neck, k7(7:8:8:9) sts from Left Front (69(71:77:79:85:87) sts).

Next 2 rows: knit to last 20 sts, W&T.

Next 2 rows: knit to last 16 sts, W&T.

Next 2 rows: knit to last 12 sts, W&T.

Next 2 rows: knit to last 8 sts, W&T.

Next row (WS): knit.

Cast off 3 sts at beg of next 2 rows (63(65:71:73:79:81) sts).

Cont to work in garter stitch pattern until collar measures 5(5:5:6:6:7)cm / 2(2:2:2½:2½:2¾)in, ending with a WS row.

Cast off.

To make up

Block each piece to your required measurements (see pages 40–41).

Use mattress stitch (see page 39) to join the following pieces: sew in sleeves to correspond with armholes, joining row ends above coloured scraps of yarn to cast-off edges at underarm. Join side and sleeve seams.

Sew on buttons to correspond with buttonholes (see page 43). Weave in any remaining ends (see page 38).

HAT

Using yarn A and 3.25mm (UK 10; US 3) needles, cast on 72(78:84:90) sts. Join to work in the round, being careful not to twist sts. Place marker for beginning of round.

Rounds 1–4: knit.

Round 5: * k2tog, YO, rep from * to end.

Last round forms the fold for the picot edge.

Change to 4.5mm (UK 7; US 7) needles.

Rounds 6 and 7: knit.

Join in yarns B and C.

Round 8: * k1B, k1C, rep from * to end.

Round 9: * k1C, k1B, rep from * to end.

Rounds 10 and 11: using yarn A, knit.

Rounds 12–14: using yarn C, knit.

Following Chart A, place the bird motif on the next round as follows (**Note:** as you are knitting in the round, all rows in Chart A are now knitted. Read each row in the chart from right to left; if you are using the written instructions, read the even rows in reverse):

Round 15: * work row 1 of Chart A across next 10 sts, K2(3:2:5)C, rep from * to end.

Rounds 16–25: cont in pattern as set by last round, working next row of Chart A each time.

Round 26: using yarn C, knit.

Round 27: using yarn C, * k1, kfb into next st, k1, rep from * to end (96(104:112:120) sts).

Round 28: using yarn C, knit.

Round 29: using yarn A, knit.

SIZES 1, 2, 3 and 4 ONLY

Round 30: using yarn A, purl.

SIZES 5 and 6 ONLY

Round 30: using yarn A, knit.

ALL SIZES AGAIN

Rounds 31 and 32: rep rounds 8 and 9.

Round 33: using yarn A, knit.

SIZES 1, 2, 3 and 4 ONLY

Round 34: using yarn A, knit.

SIZES 5 and 6 ONLY

Round 34: using yarn A, purl.

ALL SIZES

Rounds 35 and 36: using yarn C, knit.

Begin to shape crown as follows:

Round 37: * k2togtblC, k8(8:9:9:10:11)C, k2togC, rep from * to end (80(80:88:88:96:104) sts).

Round 38: using yarn C, knit.

SIZES 1, 2, 3 and 4 ONLY

Round 39: * k2togtblA, k6(6:7:7)A, K2togA, rep from * to end (64(64:72:72) sts).

Round 40: using yarn A, knit.

Rounds 41 and 42: rep rounds 8 and 9.

Cut yarns B and C and cont with yarn A only.

Round 43: * k2togtbl, k4(4:5:5), k2tog, rep from * to end (48(48:56:56) sts).

Round 44: knit.

Round 45: * k2togtbl, k2(2:3:3), k2tog, rep from * to end (32(32:40:40) sts).

Round 46: knit.

Round 47: * k2togtbl, K0(0:1:1), k2tog, rep from * to end (16(16:24:24) sts).

Round 48: knit.

Round 49: * k2tog, rep from * to end (8(8:12:12) sts).

Cut yarn and thread through rem sts, pull tight and fasten off.

SIZES 5 and 6 ONLY

Rounds 39 and 40: using yarn A, knit.

Rounds 41 and 42: rep rounds 8 and 9.

Round 43: * k2togtblA, k8(9)A, k2togA, rep from * to end (80(88) sts).

Round 44: using yarn A, knit.

Round 45: * k2togtblC, k6(7)C, k2togC, rep from * to end (64(72) sts).

Rounds 46–48: using yarn C, knit.

Round 49: * k2togtblC, k4(5)C, k2togC, rep from * to end (48(56) sts).

Round 50: using yarn A, knit.



Round 51: * k2togtblA, k2(3)A, k2togA, rep from * to end (32(40) sts).

Rounds 52 and 53: using yarn A, knit.

Cut yarn A. Cont in yarn C only.

Round 54: * k2togtbl, k0(1), k2tog, rep from * to end (16(24) sts).

SIZE 5 ONLY

Round 55: knit.

Round 56: * k2tog, rep from * to end (8 sts).

Cut yarn and thread through rem sts, pull tight and fasten off.

SIZE 6 ONLY

Round 55: * k2togtbl, K1, rep from * to end (16 sts).

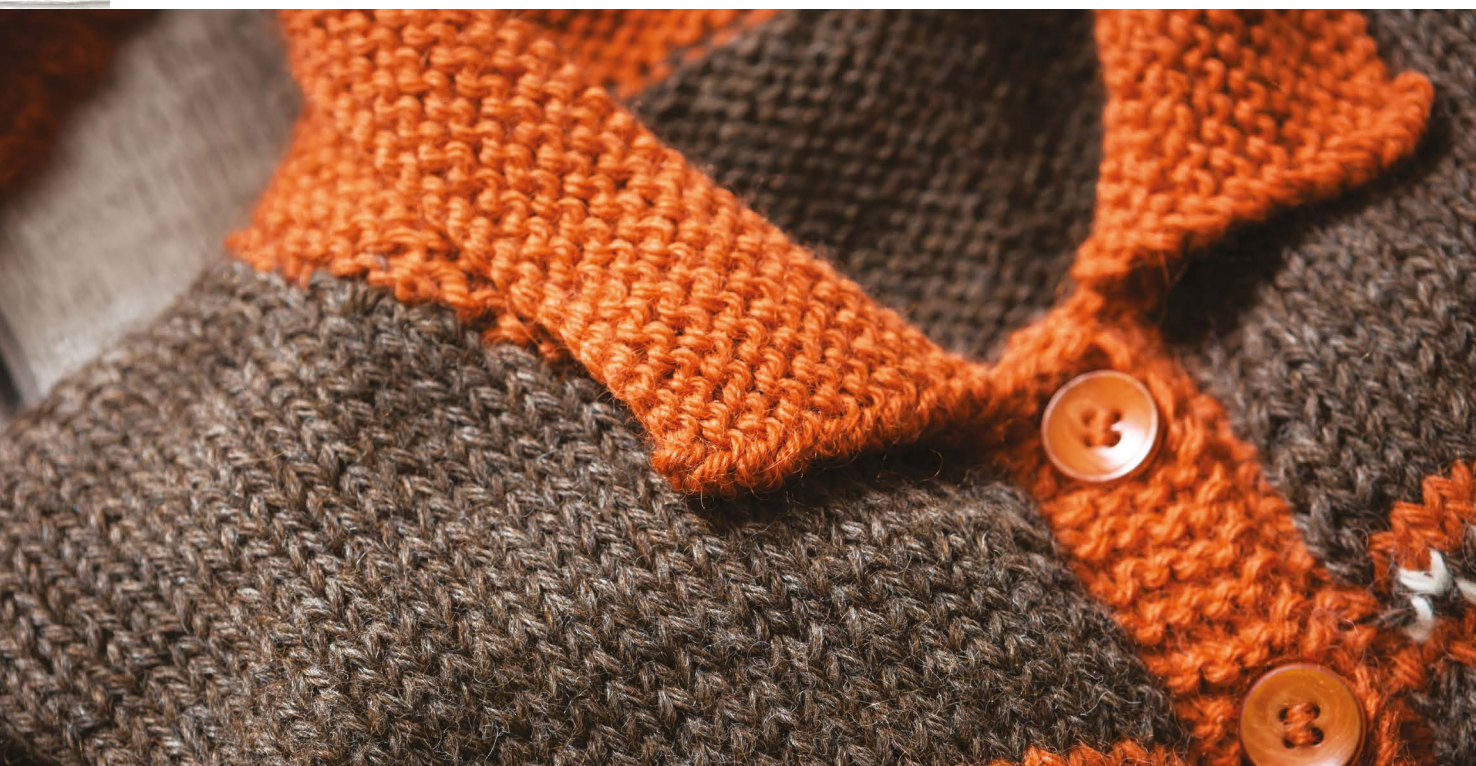
Round 56: knit.

Round 57: * k2tog, rep from * to end (8 sts).

Cut yarn and thread through rem sts, pull tight and fasten off.

To make up

Turn up hem on picot row and overcast stitch into place on the WS. Weave in any remaining ends (see page 38).



PATTERN

Back

Using 3mm (UK 11; US 2/3) needles and yarn A cast on 97(105:110:120:130) sts.

Knit 5 rows.

Fasten off yarn A.

Change to 3.25mm (UK 10; US 3) needles and yarn B.

Beginning with a RS knit row, work 6 rows in St st.

Following the correct instructions for your size, establish edge sts and Chart A as follows:

Row 1 (RS): k1(4:1:0:5)B, work row 1 of Chart A 8(8:9:10:10) times, k0(5:1:0:5)B.

Row 2 (WS): p0(5:1:0:5)B, work row 2 of Chart A 8(8:9:10:10) times, p1(4:1:0:5)B.

Cont as set, working next row of Chart A each time and maintaining edge sts as established until chart is complete. Fasten off yarn A.

Cont in St st using yarn B only until Back measures 28(31:35:40:47)cm / 11(12¼:13¾:15¼:18½)in from cast-on edge, ending with a RS row.

Dec row (WS): p2(2:2:3:4), [p2tog, p2] 23(25:26:28:30) times, p2tog, p1(1:2:3:4) (73(79:83:91:99) sts).

Fasten off yarn B.

Change to yarn C and work 2 rows in St st.

Change to 3.5mm (UK 9; US 4) needles.

Begin working from **Chart D** as follows:

Row 3 (RS): following correct chart for your size, work row 3 of Chart D to end.

Row 4 (WS): work next row of **Chart D**.

Cont working from **Chart D** as set until chart is complete. Armhole shaping is also complete (53(55:57:61:65) sts).

Cont in yarn B only, work in St st until Back measures 41(45:50:56:64)cm / 16¼ (17¾:19¾:22:25¼)in from cast-on edge, ending with a WS row.

SHAPE SHOULDERS

Cast off 12(12:13:14:15) sts at the beg of next 2 rows.

Place rem 29(31:31:33:35) sts on stitch holder for Back neck.

Front

Work as Back until Front measures 35(39:44:49:57)cm / 13¾(15¼:17¼:19¼:22½)in from cast-on edge, ending with a WS row.

LEFT FRONT SHOULDER

Cont to keep pattern correct according to **Chart D** as for Back and, at the same time, shape neck as follows:

Next row (RS): patt across 18(18:19:20:21) sts and turn to work on these sts only for left shoulder, leaving rem sts on a stitch holder.

Next row (WS): patt to end.

Next row (RS): patt to last 2 sts, k2tog (1 st dec).

Repeat the last 2 rows until 12(12:13:14:15) sts rem.

Work straight in pattern until the Front measures the same as the Back to shoulder shaping.

Cast off 12(12:13:14:15) sts.

RIGHT FRONT SHOULDER

With RS facing, leave centre 17(19:19:21:23) sts on a stitch holder for Front neck and rejoin yarn to rem 18(18:19:20:21) sts for right shoulder.

Next row (RS): patt to end.

Next row (WS): patt to end.

Next row (RS): SSK, patt to end (1 st dec).

Repeat the last 2 rows until 12(12:13:14:15) sts rem.

Work straight until the Front measures the same as the Back to shoulder shaping.

Cast off sts.



Sleeves

MAKE TWO

Using 3mm (UK 11; US 2/3) needles and yarn A cast on 36(38:40:44:48) sts.

Knit 5 rows.

Fasten off yarn A.

Change to 3.25mm (UK 10; US 3) needles.

(Note: read through the following section carefully before beginning as you will be working multiple instructions at the same time.)

Join yarn C and establish pattern as follows:

(Note: throughout charted section work edge sts (if any) in appropriate yarn for pattern – e.g. yarn C for rows 1 and 2, yarn E or D for rows 3–7, and so on. As you progress through the chart while increasing, you may not end with a full chart repeat – take care to keep pattern correct throughout on both RS and WS rows, using the chart as a guide.)

Row 1 (RS): k2(3:0:0:0), work row 1 of Chart C to last 2(3:0:0:0) sts, k2 (3:0:0:0).

Row 2 (WS): p2(3:0:0:0), work row 2 of Chart C to last 2(3:0:0:0) sts, p2(3:0:0:0).

Work rem 17 rows from Chart C as set, then work in stripe pattern and St st as follows: 2 rows with yarn C, 8 rows with yarn B.

At the same time, beginning on row 5 of Chart C, shape sleeve as follows, taking increased sts into pattern:

Inc row (RS): kfb, patt to last st, kfb (2 sts inc).

Rep inc row every sixth row until you have 52(56:60:68:74) sts left.

Cont straight in pattern until sleeve measures 18(20:22:25:28)cm / 7(7¾:8¾:9¾:11)in from cast-on edge, ending with a WS row.

Fasten off yarn C and cont in St st with yarn B only.

SHAPE TOP

Cast off 4(5:5:6:7) sts at beg of next 2 rows (44(46:50:56:60) sts).

Next row (RS): knit.

Next row (WS): purl.

Next row: k2, SSK, knit to last 4 sts, k2tog, k2 (2 sts dec).

Next row: purl.

Rep last 4 rows until 38(40:42:48:50) sts rem.

Work 0(2:0:2:0) rows straight in St st.

Cast off 3 sts at beg of next 8(8:8:10:10) rows (14(16:18:18:20) sts).

Cast off sts.

Pockets

MAKE TWO

Using 3.25mm (UK 10; US 3) needles and yarn C, cast on 20(22:24:26:28) sts.

Following correct chart for your size and ending at point indicated on chart, work rows 1–28(32:36:40:44) of **Chart B**.

Change to 3mm (UK 11; US 2.5) needles and knit 4 rows.

Buttonhole row (RS): k8(9:10:11:12), k2tog, YO twice, SSK, k8(9:10:11:12).

Next row (WS): k9(10:11:12:13), knit through front of first YO and back of second YO, knit to end.

Knit 3 rows.

Cast off sts.

Neckband

Sew right shoulder seam using mattress stitch (see page 39).

With RS facing, using yarn B and 3.25mm (UK 10; US 3) needles, pick up and k15(15:17:17:19) sts down left side of Front neck, k17(19:19:21:23) sts from Front neck holder, pick up and k15(15:17:17:19) sts up right side of Front neck, k29(31:31:33:35) sts from Back neck holder (76(80:84:88:96) sts).

Knit 5 rows.

Cast off sts.

To make up

Block each piece to your required measurements (see pages 40–41).

Use mattress stitch (see page 39) to join the following pieces: join left shoulder and neckband seam. Sew sleeves into armhole carefully, easing them to fit. Join side and sleeve seams. Sew on pockets.

Sew on buttons behind pockets, opposite buttonholes (see page 43). Weave in any remaining ends (see page 38).



STARS & CROSSES

This pattern reminds me of an Aztec design, especially in the colours of the swatch. I think it would be a great pattern for a pillow cover or a poncho. The main pattern repeat is 20 stitches,

from rows 8 to 18. The borders (rows 1 to 7 and 19 to 25) have a pattern repeat of 3 stitches. The main pattern works well with the borders, but both may need adapting slightly to fit a larger project.

CHART

- Yarn A (Ivory)
- Yarn B (Charcoal)
- Yarn C (Madder)
- Yarn D (Copper)

- Row 1:** * k2A, k1B, rep from * to last 2 sts, k2A.
Row 2: * p2A, p1B, rep from * to last 2 sts, p2A.
Row 3: * k2B, k1A, rep from * to last 2 sts, k2B.
Row 4: * p2B, p1A, rep from * to last 2 sts, p2B.
Row 5: as row 1.
Row 6: as row 2.
Row 7: using yarn B, knit.
Row 8: p1C, p1A, p5C, p1A, p1C, p1A, p2C, p1A, p3C, p1A, p2C, p1A.
Row 9: k3C, k2A, k1C, k2A, k3C, k1A, k1C, k1A, k3C, k1A, k1C, k1A.
Row 10: p1D, p1A, p1D, p1A, p1D, p1A, p1D, p1A, p4D, p5A, p3D.
Row 11: k3A, k2D, k1A, k2D, k3A, k2D, k1A, k1D, k1A, k1D, k1A, k2D.
Row 12: p3B, p1A, p1B, p1A, p4B, p2A, p1B, p1A, p1B, p1A, p1B, p2A, p1B.
Row 13: k2B, k2A, k3B, k2A, k11B.
Row 14: as row 12.
Row 15: as row 11.
Row 16: as row 10.
Row 17: as row 9.
Row 18: as row 8.
Row 19: as row 7.
Row 20: as row 2.
Row 21: as row 1.
Row 22: as row 4.
Row 23: as row 3.
Row 24: as row 2.
Row 25: as row 1.

